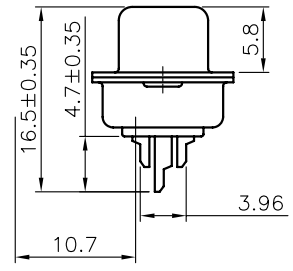
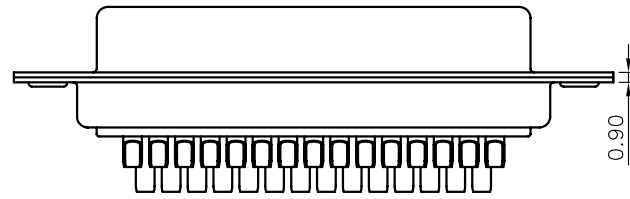
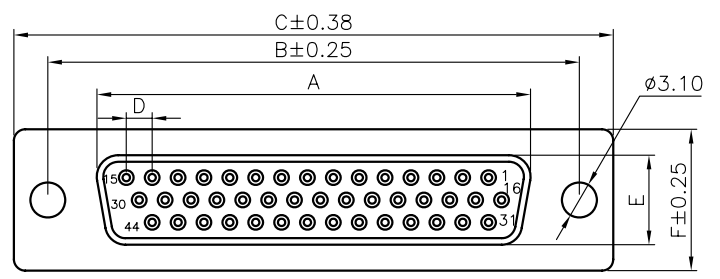
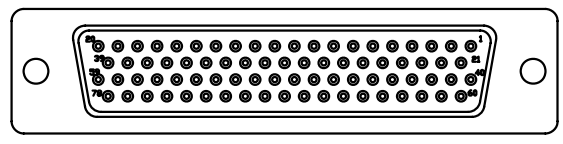
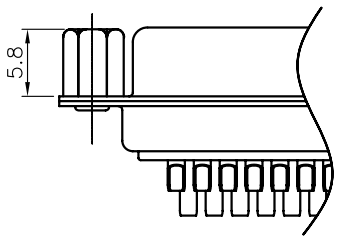


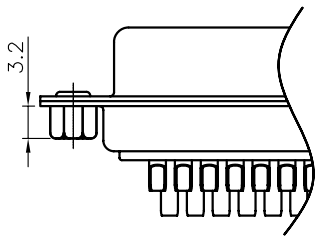
78 Position



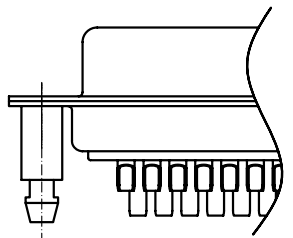
CC Type
(Not Thru Hole)



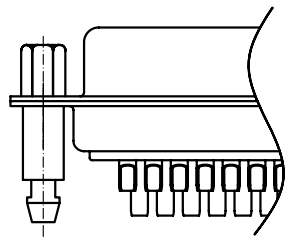
CS Type
(Thru Hole)



BR Type



BRJ Type

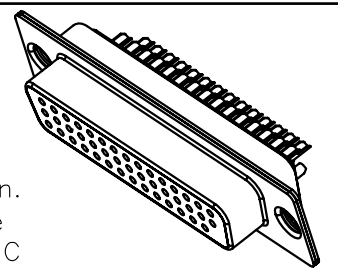


Specifications:
 Current rating: 3.0A AC, DC
 Voltage rating: 250V AC, DC
 Contact resistance: 30m ohm max.
 Insulation resistance: 5,000M ohm min.
 Withstanding voltage: 1,000V AC/Minute
 Operating Temperature: $-40^{\circ}\text{C} \sim +85^{\circ}\text{C}$
 Materials:

Insulator: High Temp. Plastic (UL94V-0)
 Contact: Copper alloy Nickel Undercoated,
 Selective Gold Plated
 Shell: Metal Iron With Tin plated
 How To Order

5508-XXS-XX-XX-XX-F1

- Blank: Black (Standard)
- WH: White ; BU: Blue
- Blank: Standard type
- CS: Rear Rivet
- CC: Front Rivet
- BR: Board Lock-nut Rivet
- BRJ: Hex Screw+Hex Nut
- 01: Full Gold Plated
- 02: Selective Gold Plated
- S: Female
- No. Of Positions



Pos	A	B	C	D	E	F
15	16.33	24.99	30.81	2.29	7.92	12.55
26	24.66	33.32	39.14	2.29	7.92	12.55
44	38.38	47.04	53.04	2.29	7.92	12.55
62	54.84	63.50	69.32	2.41	7.92	12.55
78	52.23	61.10	67.10	2.41	10.80	15.40

RoHS Compliant

E			
D			
C			
B			
A	13-Nov-2005	(PC0052)	Cel king
REV	DATE	FILE	BY

DRAWN: Cel king	GENERAL TOLERANCE: .X = ± 0.2 .XX = ± 0.15
CHECKED: Jeremy Liu	UNIT: mm
APPROVAL: Mike Wu	SCALE:
	SHEET: 1 / 1
	PROJECTION:



繼德工業股份有限公司
Neltron Industrial Co., Ltd.

DESCRIPTION: D-SUB High Density Solder Female Type	SIZE A4
PART NO: 5508-XXS-XX-XX-XX-F1	