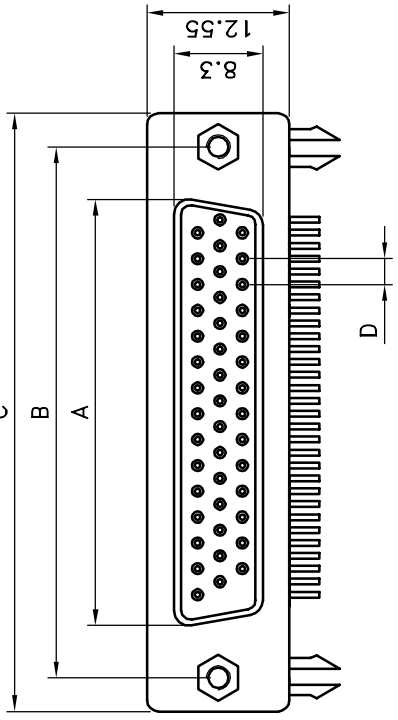


POSITION	A	B	C	D
15	16.33	25.00	30.80	2.29
26	24.66	33.30	39.20	2.29
44	38.38	47.10	53.10	2.29
62	54.84	63.50	69.40	2.41

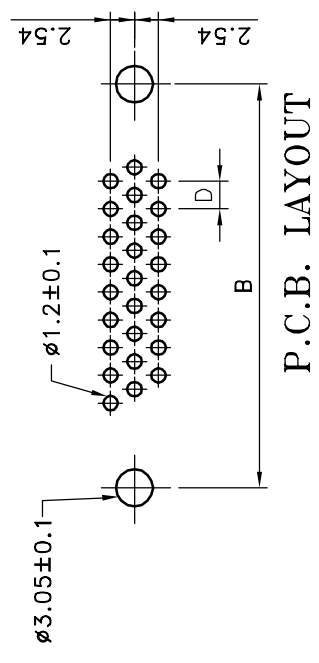
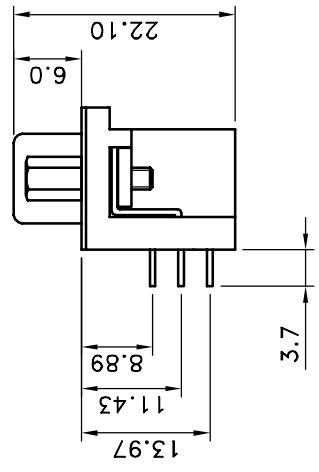
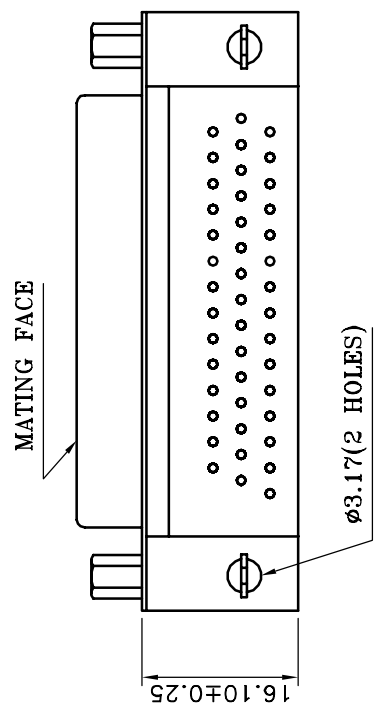
Specifications:  
 Current rating:3.0A AC,DC  
 Voltage rating:250V AC,DC  
 Temperature range:-40°C ~ +85°C  
 Contact resistance:30mohm max.  
 Insulation:5,000Mohm min.  
 Withstanding voltage:1,000V AC/Minute





Materials:  
 Insulator:PBT Glass fiber 30%(UL94V-0)  
 Contact:Copper alloy Nickel Undercoated, Gold plated  
 Shell: Metal Iron with nickel plated

HOW TO ORDER  
 5510-~~XXS~~-02A-01

- 01: GOLD PLATED
- RIVET W/BOARD LOCK /HEX SCREW
- S: FEMALE
- NO. OF POSITIONS



REV	DATE	FILE	BY	DESCRIPTION	SIZE
E				 繼德工業股份有限公司 Neltron Industrial Co., Ltd.	A4
D			DESCRIPTION: D-SUB HIGH DENSITY RIGHT ANGLE FEMALE		
C			UNIT: mm		
B			SCALE:		
A	19-JAN-2005		Jerry Chen		
			APPROVAL: Mike	PROJECTION: 	
			CHECKED: Jeremy	GENERAL TOLERANCE: .X = ±0.2 .XX = ±0.15	
			DRAWN: Jerry Chen	UNIT: mm	
				SCALE:	
				SHEET: 1 / 1	
				PROJECTION: 