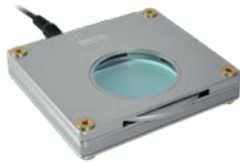





---

### BL-ZW1-Dino-Lite Backlight Pad



The BL-ZW1 is a back light illumination table with adjustable polarization for the Dino-Lite.

Please note that the polarizing feature has to be used with the Dino-Lite digital microscope with polarizing abilities; such as the AM413ZT or the AD413ZT handheld digital microscope. An optional accessory that can be attached to the BL-ZW1 is the BL-GC1 Gem Clip (The BL-GC1 Gem Clip is sold separately).

The polarizing ability of the BL-ZW1 can be used for many applications such as but not limited to geology (examining thin rock sections), metallurgy, and chemistry. For a business owner point of view, it can be used for jewelers for inspecting and presenting jewelry/ gems. The BL-ZW1 polarizing ability can also be useful for industrial applications; such as inspecting flexible circuit boards (FPC) for flaws and defects.

Power Source : USB or DC adaptor switchable

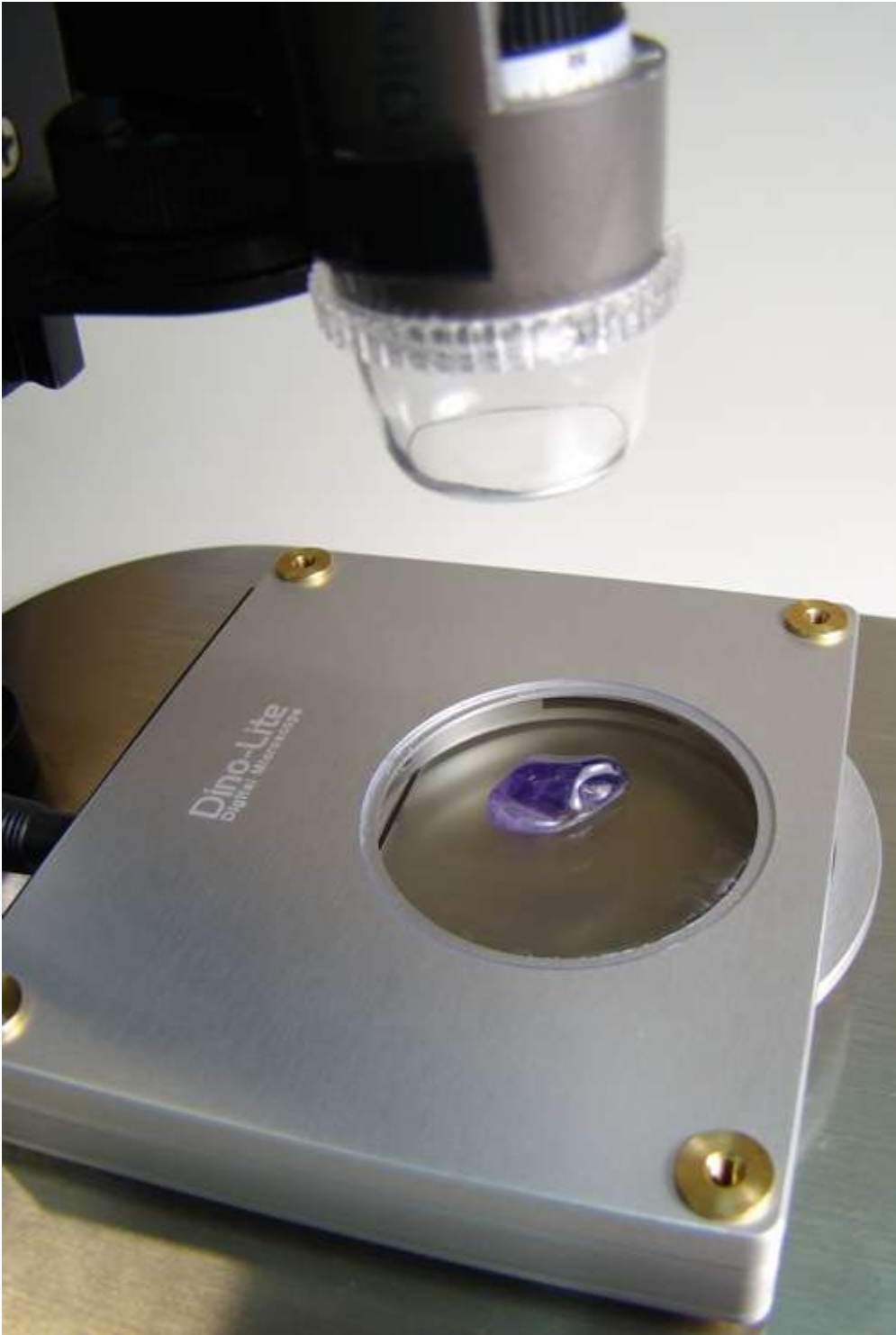
Operating Voltage : DC 5V± 0.5V

Light Intensity : over 5000 cd / m<sup>2</sup> Freely rotatable polarizer works with handheld digital microscope AM413ZT or handheld digital microscope AD413ZT

Housing Material : Aluminum Alloy

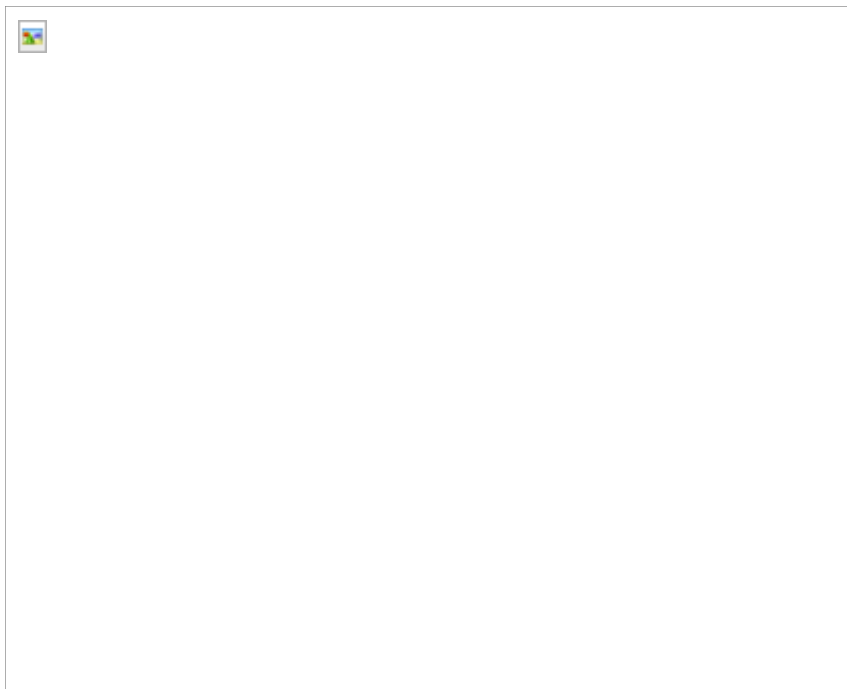
#### Accessories BL-ZW1 Demo 2



**Accessories BL-ZW1 Demo**

The video was recorded using the Dino-Lite AM413ZT, BL-ZW1 Backlight Pad, and BL-GC1 Gem Clip.

Simply by rotating the polarizing filter, the user can see through surfaces of fully or partially transparent materials as demonstrated with this video.



Model BL-ZW1-Dino-Lite Backlight Pad

Basic Specifications

Interface

Product Resolution

Mag Rate

Sensor

Frame rate

Image Format

Microtouch

LED Switchable  
(via DinoCapture)

Measurement Function  
(via DinoCapture)

Calibration Function  
(via DinoCapture)

Software

Unit Weight

Units Dimension 100mm \* 96.2mm \* 20.5mm

Master Box Dimensions