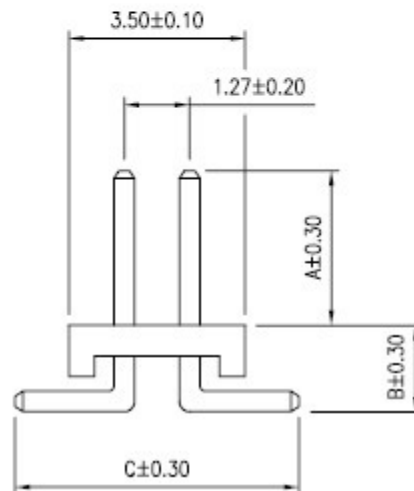
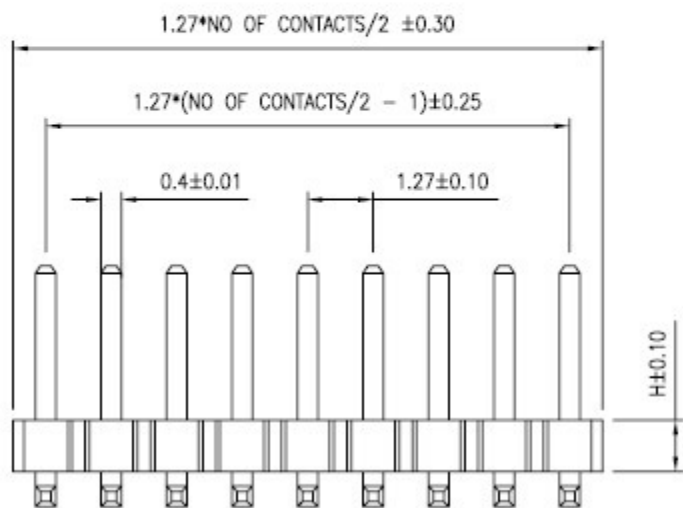


1.27mm Pitch Pin Header (PH08 Series)

| REV | ECN NO. | APP. | DATE |
|-----|------------|------|------|
| A | NEW DESIGN | | |
| | | | |
| | | | |
| | | | |



SPECIFICATION

- * Current Rating: 1 A
- * Withstanding Voltage: 600 VAC (1 min.)
- * Insulation Resistance: 1000 Megohms MIN.
- * Contact Resistance: 30 Milliohms MAX.
- * Operating Temperature: -40°C to +85°C
- * Retention Force: 450g MIN.

MATERIAL

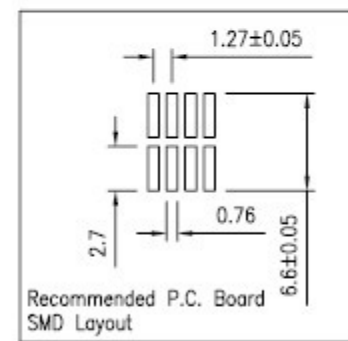
- * Contact: Phosphor Bronze , 0.40mm square post
- * Insulator: NYLON 66 + 30% G.F.
- * Plating: All Gold

Base Height

| Base | H |
|------|------|
| 1 | 1.00 |
| 2 | 1.20 |
| 3 | 1.50 |
| 4 | 2.00 |
| 5 | 2.50 |
| 6 | 3.00 |

Pin Chart

| Pin | A | B | C |
|-----|------|---|------|
| 1 | 3.00 | | 5.50 |
| 2 | | | |
| 3 | | | |
| 4 | | | |
| 5 | | | |
| 6 | | | |



ELEPARTS Co.,Ltd

| | | | |
|--------|----------|---|----------|
| 0.0± | SCALE: | TITLE: | PART NO: |
| 0.00± | UNIT: MM | 1.27X1.27MM (.05"*.05") PIN HEADER 0.40m/m SMD Dual Row | APP BY: |
| 0.000± | | MATL: NYLON 66 + 30% G.F. | CHK BY: |
| | | DWG. NO. PH08 Series | DR BY: |

