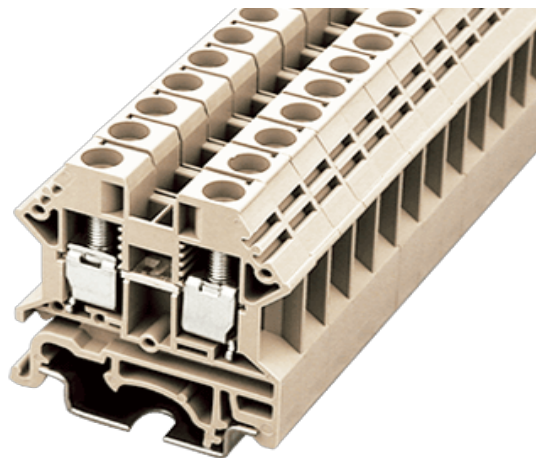


DK6N

DIN Rail Terminal Blocks > Screw Connection



circuit diagram

Product Description

M4, 600V, 50A , Gray color

General information

Short description	DIN rail terminal blocks , Feed through terminal blocks
Connection method	Screw connection
Type of locking	Rail mounting
Category	Feed through terminal blocks
Thread	M4
Level	Single level
Connection points	2

Material information

Insulation material	PA66
Flame retardant rating , compliant with UL94	V0
Color	Gray
Conductor material	Copper Alloy
Plating of conductor surface	Tinned

Connection data-UL

Stripping Length mm	12~14
---------------------	-------

Slotted screwdriver size (Blade thickness x Width) mm	0.8x4.0
Philips screwdriver size	PH2
Rated torque (N.m)	1.2
Mounting rail	TS-35/TS-32
End cover plate required	YES
PE connections	NO
Rated voltage V (UL/CUL standard group B)	600
Rated current A (UL/CUL standard group B)	50
AWG, compliant with UL/CUL, Sol. max (group B)	8
AWG, compliant with UL/CUL, Sol. min (group B)	20
AWG, compliant with UL/CUL, Str. max (group B)	8
AWG, compliant with UL/CUL, Str. min (group B)	20
Rated voltage V (UL/CUL standard group C)	600
Rated current A (UL/CUL standard group C)	50
AWG, compliant with UL/CUL, Sol. max (group C)	8
AWG, compliant with UL/CUL, Sol. min (group C)	20
AWG, compliant with UL/CUL, Str. max (group C)	8
AWG, compliant with UL/CUL, Str. min (group C)	20
Rated voltage V (UL/CUL standard group D)	600
Rated current A (UL/CUL standard group D)	5
AWG, compliant with UL/CUL, Sol. max (group D)	8
AWG, compliant with UL/CUL, Sol. min (group D)	20
AWG, compliant with UL/CUL, Str. max (group D)	8
AWG, compliant with UL/CUL, Str. min (group D)	20

Connection data-IEC

Rated data	IEC 60947-7-1
Surge voltage category	III
Pollution degree	3
Insulating material group	I
Rated current A	41
Rated voltage V	1000
Rated voltage V (III/3)	1000
Rated impulse voltage KV (II/2)	8



Rated impulse voltage KV (III/2)	8
Rated impulse voltage KV (III/3)	8
Conductor cross section solid. min mm ²	0.5
Conductor cross section solid.max mm ²	6
Conductor cross section stranded. min mm ²	0.5
Conductor cross section stranded. max mm ²	6
Conductor cross section flexible, with max ferrule without plastic sleeve mm ²	6
Conductor cross section flexible, with min ferrule without plastic sleeve mm ²	0.5
Conductor cross section flexible, with max ferrule with plastic sleeve mm ²	6
Conductor cross section flexible, with min ferrule with plastic sleeve mm ²	0.5
2 conductors with same cross section, solid, max mm ²	4
2 conductors with same cross section, stranded, max mm ²	4
2 conductors with same cross section flexible, with max ferrule without plastic sleeve mm ²	4
2 conductors with same cross section flexible, with min ferrule without plastic sleeve mm ²	0.5
2 conductors with same cross section flexible, max twin ferrules with plastic sleeve mm ²	4
2 conductors with same cross section flexible, min twin ferrules with plastic sleeve mm ²	0.5

Connection data-EX

Rated surge voltage V	8000
Rated voltage A	630
Rated current A	41
Rated conn mm ²	0.5~6
Operating temperature °C	-20°C~85°C

Environment & Safety

Back of the hand protection (YES or NO)	YES
Finger protection (YES or NO)	YES
Operating temperature. max °C	115
Operating temperature. min °C	-40

Drawings



circuit diagram

Accessories



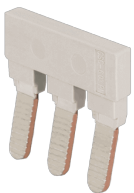
DKNSPS-002

For DK6N / DK10N Gray color Using UL94-V0 class of insulation material



DSS6N-XXP

For DK6N / DK6D Red color Using UL94-V0 class of insulation material



CSC-6XXPN






For DK4-TF (5X20) / DK4-TFL .. (5X20) Gray color Using UL94-V0 class of insulation material



CSD02-638-A

For DK6 / DK6N / DK6 / DKTL6 / DK4-TF (5x20) / DKK4-TF (5X20) Gray color Using UL94-V0 class of insulation material

TS-35C

	<p>For TS-35 rail Black color Using UL94-V2 class of insulation material</p>
	<p>TS-32 For DK / DK-PE Series Material is iron Length of 1000mm</p>
	<p>TS-35 For DK / DK-PE / AK / AK-PE / AK..P Series Material is iron Length of 1000mm</p>
	<p>TS-35/15 For DK / DK-PE Series Material is iron Length of 2000mm</p>
	<p>TM28 For DK6S / DK6N / DK6N-PE / DK6D / DK6P / DK6 / DKTL6 / DKTD6 / DK4-TF(5X20) / DK4-TFLD(5X20) / PM6N / DK4N-TF(5X20) / DK10N / DK10D / DK10 / DK10-PE / DK10N-PE / DK16H / DK16-PE / DK16N / DK35H / DK35-PE / DK35N / DK50 / DK50-PE / DK95 / DK95-PE DK150 / DK240 / PPAC-16 / PPACV-16 / PPAC-16Z / PPAC-16AS / PPAC-25 / PPAC-25AS / PPAC-50 / PPAC-50AS / PPAC-95 / PPAC-95M / PPAC-95AS / PPAC-95MAS White color Using UL94-V2 class of insulation material Marking Label</p>

Approvals

