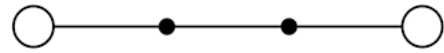
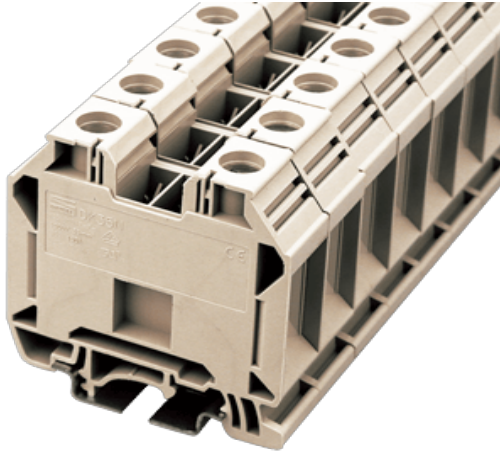


DK35N

DIN Rail Terminal Blocks > Screw Connection



circuit diagram

Product Description

M6, 600V, 150A , Gray color

General information

Short description	DIN rail terminal blocks , Feed through terminal blocks
Connection method	Screw connection
Type of locking	Rail mounting
Category	Feed through terminal blocks
Thread	M6
Level	Single level
Connection points	2

Material information

Insulation material	PA66
Flame retardant rating , compliant with UL94	V0
Color	Gray
Conductor material	Copper Alloy
Plating of conductor surface	Tinned

Connection data-UL

Stripping Length mm	14~16
---------------------	-------

Slotted screwdriver size (Blade thickness x Width) mm	1.0x5.5
Rated torque (N.m)	3.5~6.9
Mounting rail	TS-35/TS-32
End cover plate required	NO
PE connections	NO
Rated voltage V (UL/CUL standard group B)	600
Rated current A (UL/CUL standard group B)	150
AWG, compliant with UL/CUL, Sol. max (group B)	1/0
AWG, compliant with UL/CUL, Sol. min (group B)	12
AWG, compliant with UL/CUL, Str. max (group B)	1/0
AWG, compliant with UL/CUL, Str. min (group B)	12
Rated voltage V (UL/CUL standard group C)	600
Rated current A (UL/CUL standard group C)	150
AWG, compliant with UL/CUL, Sol. max (group C)	1/0
AWG, compliant with UL/CUL, Sol. min (group C)	12
AWG, compliant with UL/CUL, Str. max (group C)	1/0
AWG, compliant with UL/CUL, Str. min (group C)	12

Connection data-IEC

Rated data	IEC 60947-7-1
Surge voltage category	III
Pollution degree	3
Insulating material group	I
Rated current A	125
Rated voltage V	1000
Rated voltage V (III/3)	1000
Rated impulse voltage KV (II/2)	8
Rated impulse voltage KV (III/2)	8
Rated impulse voltage KV (III/3)	8
Conductor cross section solid. min mm ²	1.5
Conductor cross section solid.max mm ²	35
Conductor cross section stranded. min mm ²	1.5
Conductor cross section stranded. max mm ²	35
Conductor cross section flexible, with max ferrule without plastic sleeve mm ²	35

Conductor cross section flexible, with min ferrule without plastic sleeve mm ²	1.5
Conductor cross section flexible, with max ferrule with plastic sleeve mm ²	35
Conductor cross section flexible, with min ferrule with plastic sleeve mm ²	1.5
2 conductors with same cross section, solid, max mm ²	10
2 conductors with same cross section, stranded, max mm ²	10
2 conductors with same cross section flexible, max twin ferrules with plastic sleeve mm ²	10
2 conductors with same cross section flexible, min twin ferrules with plastic sleeve mm ²	6

Connection data-EX

Operating temperature °C	-20°C~85°C
--------------------------	------------

Environment & Safety

Back of the hand protection (YES or NO)	YES
Finger protection (YES or NO)	YES
Operating temperature. max °C	115
Operating temperature. min °C	-40

Drawings



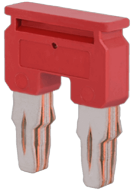
circuit diagram

Accessories

DKNSPS-004



For DK35N / DK35H Gray color Using UL94-V0 class of insulation material



DSS35N-02PN

For DK35N Red color Using UL94-V0 class of insulation material

CSC-35XXP

For DK35H / DK35N Gray color Using UL94-V0 class of insulation material



TS-35C

For TS-35 rail Black color Using UL94-V2 class of insulation material



TS-32

For DK / DK-PE Series Material is iron Length of 1000mm



TS-35

For DK / DK-PE / AK / AK-PE / AK..P Series Material is iron Length of 1000mm

TS-35/15

For DK / DK-PE Series Material is iron Length of 2000mm



TM28

For DK6S / DK6N / DK6N-PE / DK6D / DK6P / DK6 / DKTL6 / DKTD6 /
DK4-TF(5X20) / DK4-TFLD(5X20) / PM6N / DK4N-TF(5X20) / DK10N / DK10D /
DK10 / DK10-PE / DK10N-PE / DK16H / DK16-PE / DK16N / DK35H / DK35-PE
/ DK35N / DK50 / DK50-PE / DK95 / DK95-PE DK150 / DK240 / PPAC-16 /
PPACV-16 / PPAC-16Z / PPAC-16AS / PPAC-25 / PPAC-25AS / PPAC-50 /
PPAC-50AS / PPAC-95 / PPAC-95M / PPAC-95AS / PPAC-95MAS White color
Using UL94-V2 class of insulation material Marking Label

Approvals

