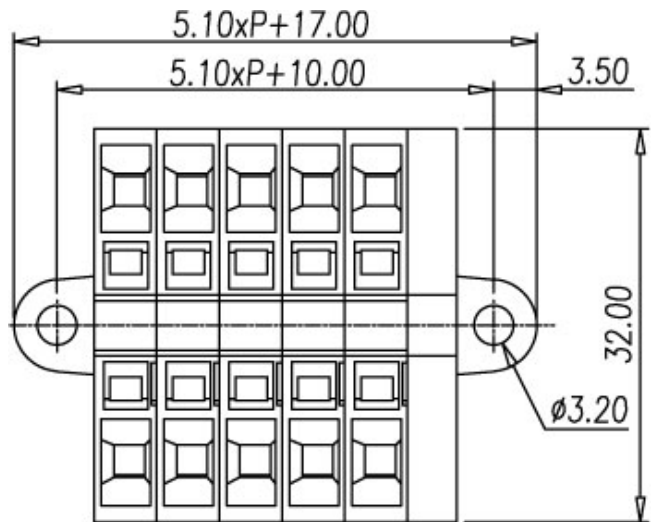
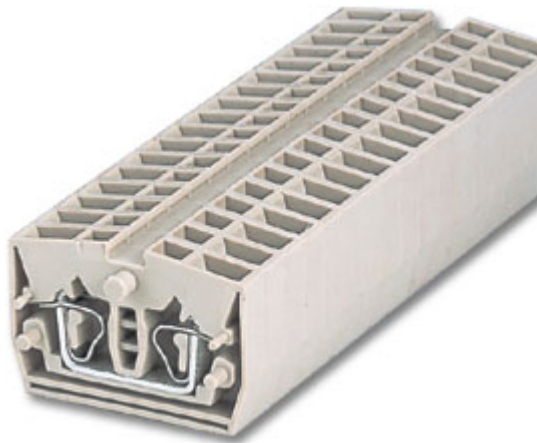


Panel Mounting Series / PM..W series



PM2.5W



| Approval | | |
|--|-----------------|------|
| Technical Data | UL | IEC |
| Rated voltage | 600V | 800V |
| Rated current | 25A | 24A |
| Conductor cross-section, solid (AWG / mm ²) | 28~12 / 0.5~2.5 | |
| Conductor cross-section, flexible (AWG / mm ²) | 14~12 / 0.5~2.5 | |
| Rated impulse withstand voltage | 6KV | |
| Torque (N-m) | | |
| Screw | | |
| Wire strip length | 8~9mm | |
| Insulating material | PA | |
| TxHxW (mm) | 5.1 x 32 x 22 | |
| Optional color | Cat. No. | |
| | PM2.5W-XXP-RD | |
| | PM2.5W-XXP-BL | |
| | PM2.5W-XXP-BK | |
| | PM2.5W-XXP-OR | |
| | PM2.5W -XXP-YG | |



| | Accessories | Cat. No. |
|------------------|-------------|-------------|
| End cover | Left | PM2.5WC |
| | Right | PM2.5W-01C |
| Insertion bridge | 2 way | CSC-2.502 |
| | 3 way | CSC-2.503 |
| Marking label | | TM20 |
| Tool | | 0.4 x 2.5mm |
| | | |
| | | |
| | | |