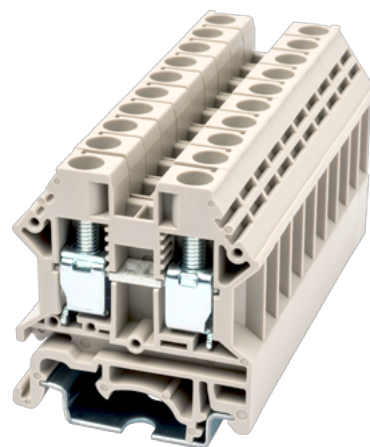


DK6N

DIN >

:2021-09-08 :1.2



M4, 600V, 50A, Beige (default)

	DIN rail terminal blocks, Feed through terminal blocks
	Feed through terminal blocks
	Beige (default)
	Screw connection
	Rail mounting
(mm)	8
(mm)	42.25
(mm)	45.5
	Single level
	2
	PA
	I
UL 94	V0

-IEC



(V)	1000
(A)	41
(III/2)(V)	1000
(II/2)(KV)	8
(III/2)(KV)	8
(III/3)(KV)	8
(mm ²)	0.5
(mm ²)	6
(mm ²)	0.5
(mm ²)	6
(mm ²) , ,	0.5
(mm ²) , ,	6
(mm ²) , ,	0.5
(mm ²) , ,	6
2 (mm ²)	4
2 (mm ²)	4
(mm ²) 2 , ,	0.5
(mm ²) 2 , ,	4
2 (mm ²) , ,	0.5
2 (mm ²) , ,	4
	M4
Width)(mm) (Blade thickness x	0.8x4.0
Philips	PH2
(N.m)	1.2
	12~14
	TS-35
	YES
	NO

-UL



(UL/CUL Group B)(X)		600
(UL/CUL Group C)(V)		600
(UL/CUL Group C)(A)		50
(UL/CUL Group D)(V)		600
(UL/CUL Group D)(A)		5
UL/CUL	AWG	20
UL/CUL	AWG	8
UL/CUL	AWG	20
UL/CUL	AWG	8

&

(YES or NO)		YES
가 (YES or NO)		YES
		120
		-40

UL

(Group B)(AWG)		20~8
(Group B)(V)		600
(Group B)(A)		50
(Group C)(AWG)		20~8
(Group C)(V)		600
(Group C)(A)		50
(Group D)(AWG)		20~8
(Group D)(V)		600
(Group D)(A)		5

CUL

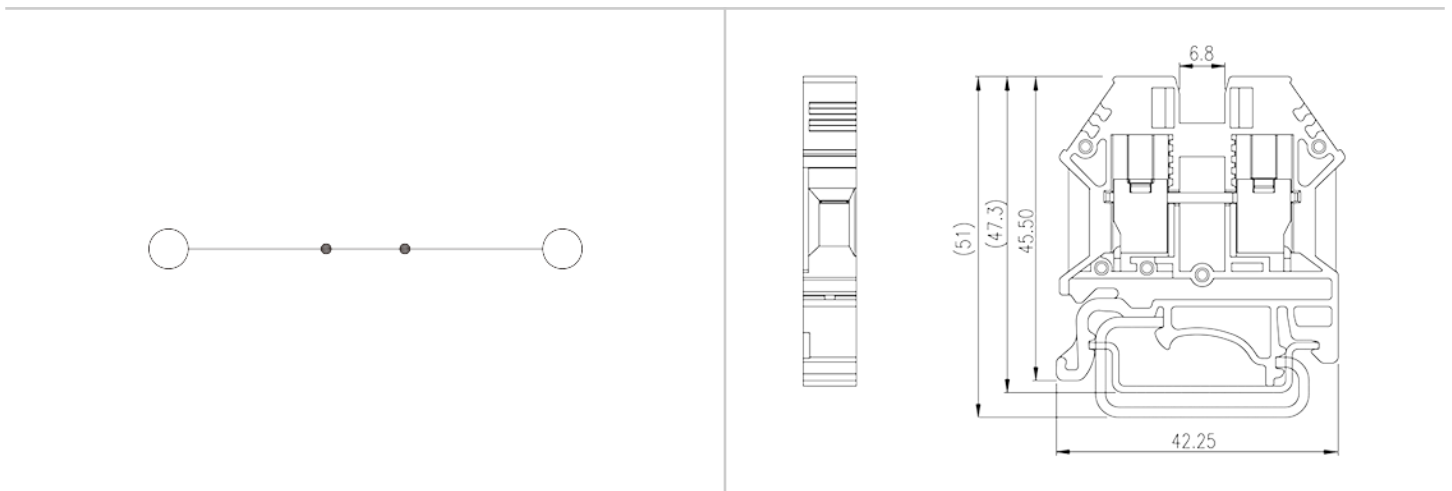
(Group B)(AWG)		20~8
(Group B)(V)		600
(Group B)(A)		50
(Group C)(AWG)		20~8
(Group C)(V)		600
(Group C)(A)		50

(Group D) (AWG)	20~8
(Group D) (V)	600
(Group D) (A)	5

VDE

(mm ²)	0.5~6
(V)	1000
(A)	41

(mm ²)	0.5~6.0
(V)	630
(A)	41



TS-35



DIN-Rail

For DP / DP-PE / DK / DK-PE / AK / AK-PE / AK..P series. Material is iron.
Length of 1000mm / 2000mm.



DKNSPS-002

Partition Plate

For DK6N / DK10N. Grey color. Using UL94-V0 class of insulation material.



DSS6N-XXP

Plug-in bridge

For DK6N / DK6D. Red color. Using UL94-V0 class of insulation material.



DK6NC

End cover

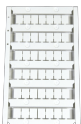
For DK6N Grey color. Using UL94-V0 class of insulation material.



CSC-6XXP

Insertion Bridge

For DK6. Grey color. Using UL94-V0 class of insulation material.



TM49W

Marking Label

For BEST APPLICATION : DP6, DP6-TN, DP6-TR, DP6-PE, DP6-TN-PE, DP6-TR-PE, DPTD6, DPTL6, DPTD6-D05, DPTD6-D06, DK6N, DK6N-TN, DK6N-PE, DKTD6N, DKTD6, DKTL6, PM6N AVAILABLE APPLICATION : DK10N, DK10N-TN, DK10N-PE, DK10-PE, DK16-PE, DK16N-PE, DK16H, DK35H, DK35H-PE, DK50, DK50-PE, DK95-PE, DK95, DK150, DK240 DKM5, DKM6, DKM8, DKM10, DKM12, DKMW8, DKM6-2, DKM8-2, DKM10-2, SS4, SS5, SS6, SS7, SS8, SS11 White color. Using UL94-V2 class of insulation material.