

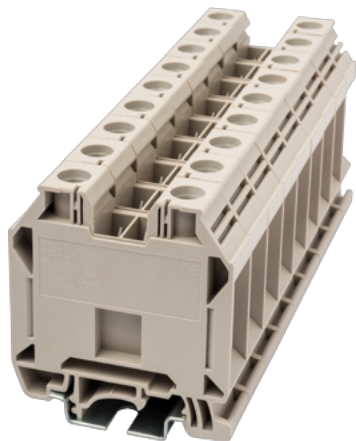
DK35N

DIN

>

:2021-09-08

:1.2



M6, 600V, 150A, Beige (default)

	DIN rail terminal blocks, Feed through terminal blocks
	Feed through terminal blocks
	Beige (default)
	Screw connection
	Rail mounting
(mm)	56.4
(mm)	16
(mm)	59.4
	Single level
	2
	PA
	I
UL 94	V0

-IEC



(V)		1000
(A)		125
(III/3)(V)		1000
(III/3)(KV)		8
(mm ²)		1.5
(mm ²)		35
(mm ²)		1.5
(mm ²)		35
(mm ²)	,	1.5
(mm ²)	,	35
(mm ²)	,	1.5
(mm ²)	,	35
2	(mm ²)	1.5
2	(mm ²)	16
2	(mm ²)	1.5
2	(mm ²)	10
(mm ²)	2 ,	1.5
(mm ²)	2 ,	10
2	(mm ²) ,	2.5
2	(mm ²) ,	10
Width)(mm)	(Blade thickness x	1.0x5.5
Philips		PH3
(N.m)		3.5~6.9
(N.m)		3.5
(N.m)		6.9
		14~16
		TS-35
		NO
		NO

-UL

(UL/CUL Group B)(V)		600
(UL/CUL Group B)(A)		150
(UL/CUL Group C)(V)		600
(UL/CUL Group C)(A)		150
UL/CUL	AWG	12
UL/CUL	AWG	1/0
UL/CUL	AWG	12
UL/CUL	AWG	1/0

&

(YES or NO)		YES
가 (YES or NO)		YES
		120
		-40

UL

(Group B)(AWG)		12~1/0
(Group B)(V)		600
(Group B)(A)		150
(Group C)(AWG)		12~1/0
(Group C)(V)		600
(Group C)(A)		150

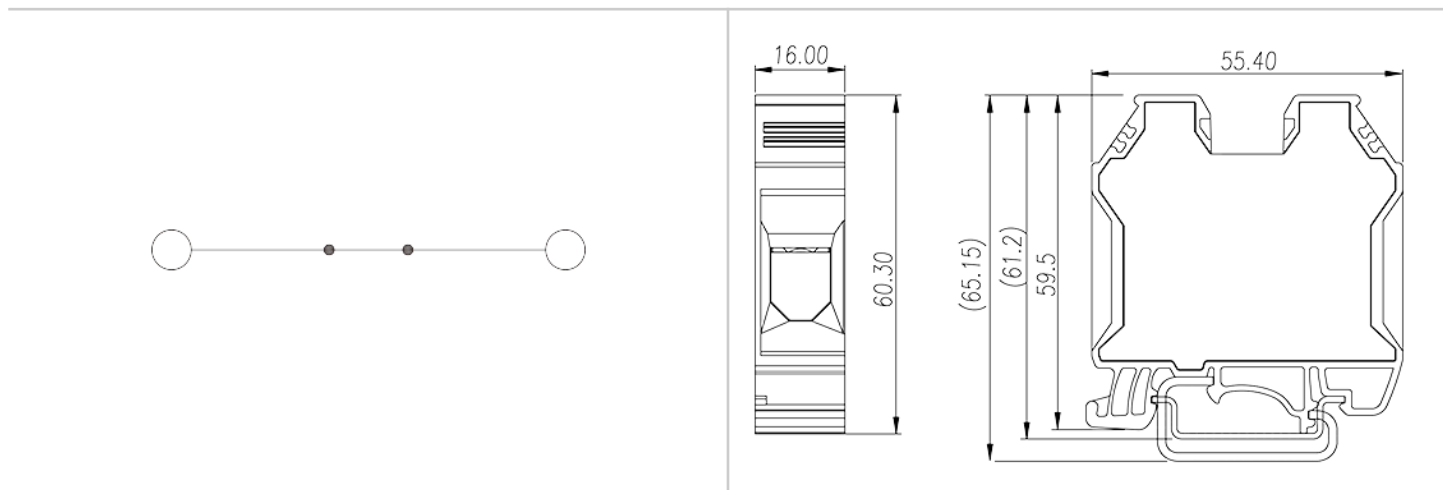
CUL


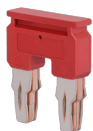

(Group B)(AWG)		12~1/0
(Group B)(V)		600
(Group B)(A)		150
(Group C)(AWG)		12~1/0
(Group C)(V)		600
(Group C)(A)		150

VDE

(mm ²)		4~35
--------------------	--	------

(V)	1000
(A)	125



	<p>TS-35N DIN-Rail For DP / DP-PE / DK / DK-PE / AK / AK-PE / AK..P series. Material is iron. Length of 1000mm / 2000mm.</p>
	<p>DSS35N-02PN Plug-in bridge For DK35N. Red color. Using UL94-V0 class of insulation material.</p>
	<p>DKNSPS-004 Partition Plate For DK35N / DK35H. Grey color. Using UL94-V0 class of insulation material.</p>



CSC-35XXP

Insertion Bridge

For DK35H / DK35N. Gray color. Using UL94-V0 class of insulation material.



TM50W

Marking Label

For BEST APPLICATION : DP10, DP10-TN, DP10-PE, DP10-TN-PE

AVAILABLE APPLICATION : DP16, DP16-PE White color. Using UL94-V2 class of insulation material.