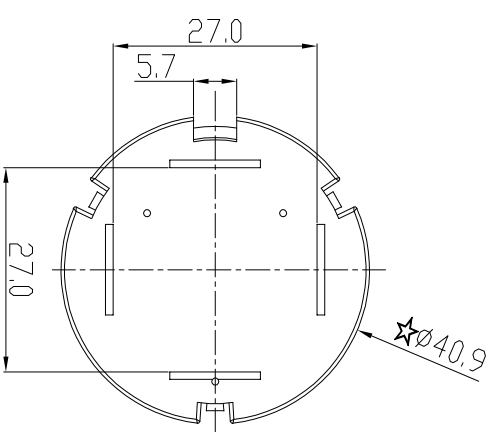
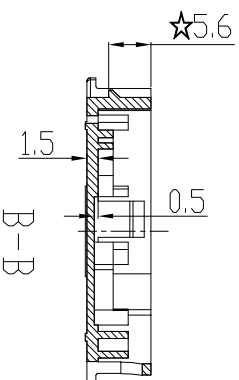
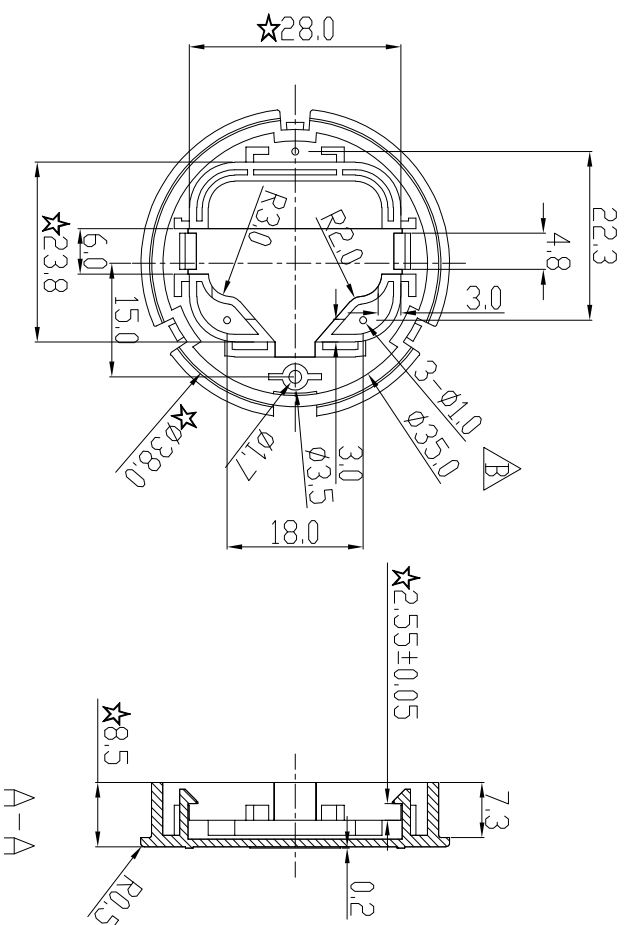


REVISIONS

REF FILE	ZONE	QTY.	DESCRIPTION	REV.	CHANGED BY / DATE
			NEW DESIGN	A	MAD ZX 2009.02.05
			Added 3 holes	B	PANOF 2010-07-02
			Update	C	PANOF 2013-01-08
			Changed 2.2 to 2.55MM	D	PANOF 2013-11-01



- NOTES:
1. General thickness 1.5 mm. General draft angle to be 2°, unless otherwise specified.
  2. Material: ABS. Part to be compliant with EU RoHS Directive 2002/95/EC or equivalent. Vendor to provide certification of compliance by third party before start of mass production.
  3. Finish & Color: grey
  4. Tooling Code: ML03387; 11(53558723B)+1(53558724B)+2(53558722D)
  5. Part to be free from moulding defects, such as flash, sink mark, flow line and distortion etc.
  6. All fillets and radii are 0.5mm, unless otherwise specified.
  7. Tooling structure must be approved by Eng. department prior to the fabrication
  8. All dimensions affected by draft apply at the large end of the posts and the small end of the holes unless otherwise specified.
  9. critical dimension
  10. change size

DO NOT SCALE DRAWING

RIVER DISPLAY LIMITED

UNLESS SPECIFIED DIMENSION ARE IN MM		TOLERANCES		MODEL NAME :		MODEL NO. :	
DECIMAL	ANGULAR	DECIMAL	ANGULAR	TH326/WW69			
X. ±0.50	±0.5	X. ±0.20	±0.25	PART NAME :		STAGE :	
X.XX ±0.10	±0.10	X.XX ±0.10	±0.10	F O T O P		PRODUCT	
DRAWN	DATE	DRAWING NO. :	MAT'L :	DRAWING NO. :		CLIENT :	
PANOF	2010-07-02	S5358722D	ABS	S5358722D		ML	
CHECK	DATE	FINISHING :	EVEN THICKNESS :	DATE		SCALE :	
PANOF	2010-07-02		mm	2010-07-02			
APPROVED	DATE	SIZE	REV.	DATE		QTY :	
WANGXG	2010-07-02	A4	D	2010-07-02		SHEET 1 OF 1	