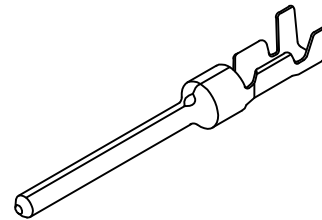
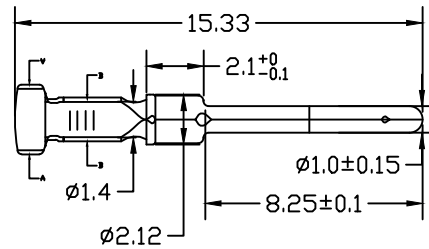
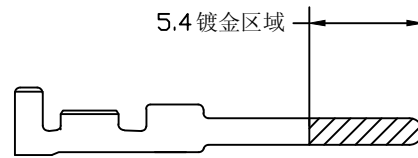
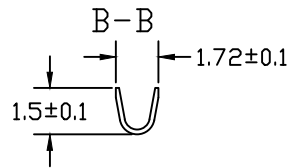
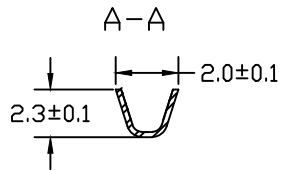


8 7 6 5 4 3 2 1

REVISIONS				
ZONE	REV	DESCRIPTION	DATE	APPROVED



备注 (NOTES):

- 1、电镀：镀镍底50U”，镀金区镀金1U”  
镀层要均匀不能有发黑发白及露铜现象
- 2、冲压要求：未标出公差者如图所示  
未标示下料尖角及冲剪锐角处最大为R0.15处理  
冲剪毛刺小于0.05
- 3、外观：制件表面光洁无压伤变形，无划痕和裂纹
- 4、材质磷铜，基材厚度：0.2MM

TOLERANCE	Drawn	Kenny	15.6.20	DUWON COMTECH CO.,LTD		
.X ±0.25	Designed	Angela	15.6.21			
.XX ±0.15	Approved	Kevin	15.6.21			
.XXX ±0.10	TITLE:			SHEET 1/1	Scale: 1:1	RoHS
Angles+ \ -2°	CP1.0 MALE TERMINAL			Part No. D2-M01-02		
Ver A0						

8 7 6 5 4 3 2 1