

DATA SHEET for LED DISPLAY

6.25mm(0.25") Seven Segments Tripple Digit

RoHS

Part No.		Dice Color	
LTD025A(B)SR-10		Super Red	
Material	Color of Segment	Surface Color	
GaAlAs	White Diffused	Black	

Absolute Maximum Rating of Each Segment (Ta=25℃)

Parameter	Symbol	Maximum Rating	Unit
Power Dissipation/seg.	P _M	50	mW
Peak Forward Current /seg. (Duty 1/10@ 1KHz)	I _{FP}	70	mA
Continuous Forward Current/seg.	I _F	20	mA
Recommend Use Current/seg.	I _F	5 ~ 10	mA
Reverse Voltage	V _R	5	V
Operation Temperature	T _{opr}	-20℃ ~ 70℃	℃
Storage Temperature	T _{stg}	-20℃ ~ 85℃	℃
Soldering Temperature (time≤5 seconds.)	T _{sol}	260±5	℃

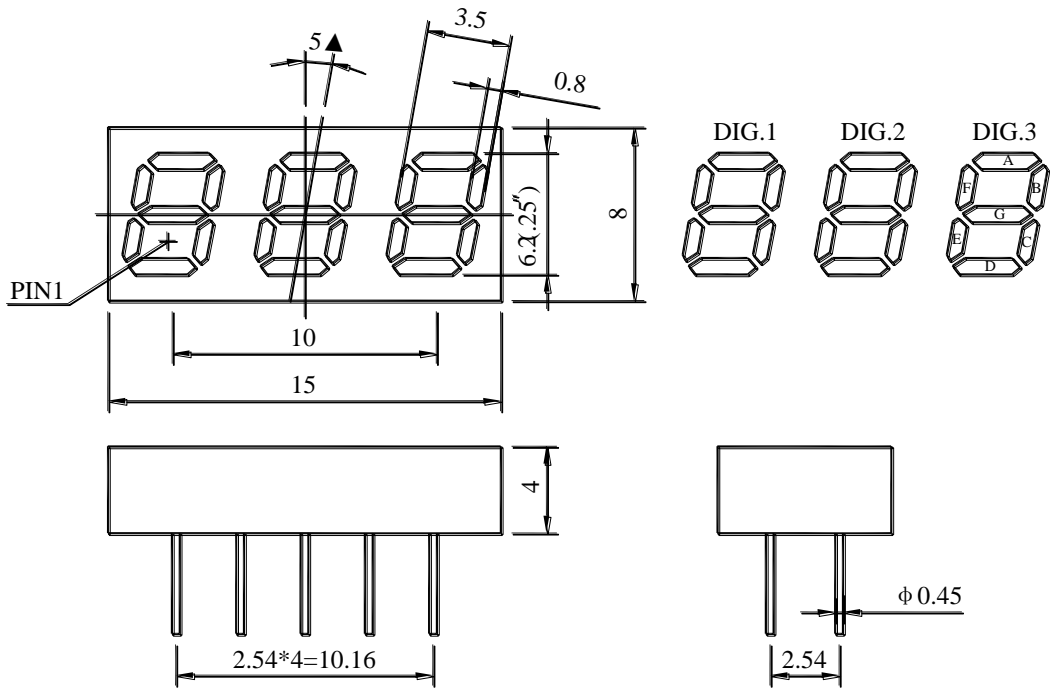
Electron-Optical Characteristics of Each Segment (Ta=25℃)

Parameter	Symbol	Typ.	Max.	Unit	Test Condition
Luminous Intensity/seg.	I _v	5.0		mcd	I _F =20mA
Forward Voltage/seg.	V _F	1.85	2.3	V	I _F =20mA
Reverse Current/seg.	I _R		50	μA	V _R =5V
Peak Wavelength	λ _p	645		nm	I _F =20mA
Spectral Line Half Width	Δλ	30		nm	I _F =20mA

Reliability Test Items and Conditions

Test Item	Test Conditions	Duration	Sample	Ac/Re
Temperature Cycle	-40℃(30 min.) ~ 25℃(5 min.) ~ 100℃(30 min.) ~ 25℃(5 min.)	50 cycles	100	0/1
High Temp. Storage	Ta=100℃	1,000 hours	100	0/1
Temp. & Humidity Test	Ta=85℃, RH=85%	1,000 hours	100	0/1
Low Temp. Storage	Ta=-40℃	1,000 hours	100	0/1
Operating Life Test	Ta=25±5℃ / DC I _F =20mA	1,000 hours	100	0/1
Solder Heat	Tsol=260±5℃, 10s	1 time	20	0/1

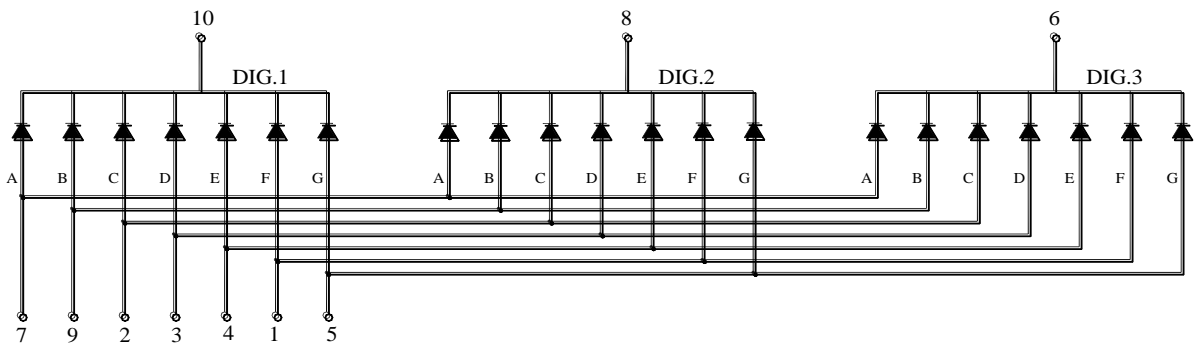
Package Dimensions :



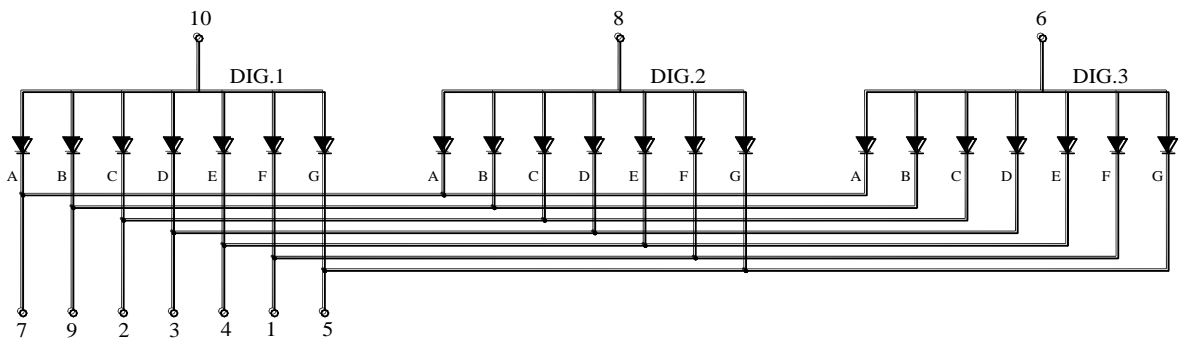
Notes :

- 1) All dimensions are in millimetres (mm), Tolerance is $\pm 0.25\text{mm}$ unless otherwise noted.
- 2) Specifications are subject to change without notice.

Internal Circuit Diagram :



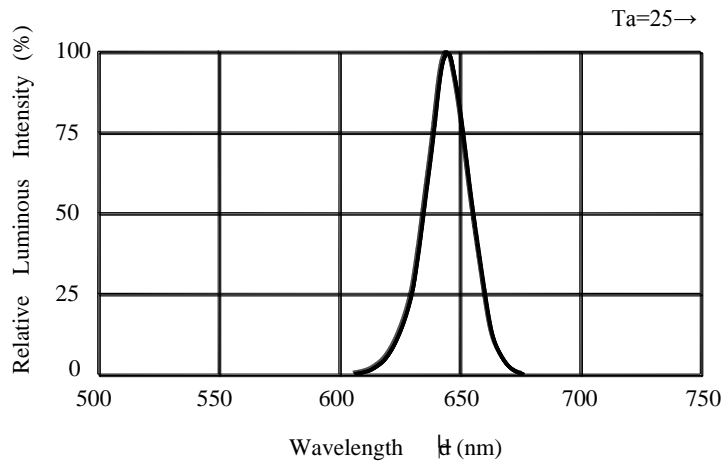
LTD025ASR-10



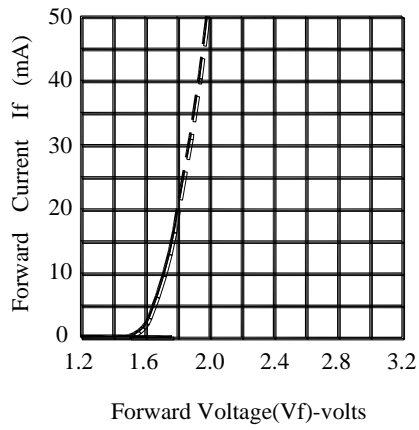
LTD025BSR-10

Typical Electro- Optical Characteristic Curves :

Spectrum Distribution



Forward Current vs. Forward Voltage



Forward Current Derating Curve

