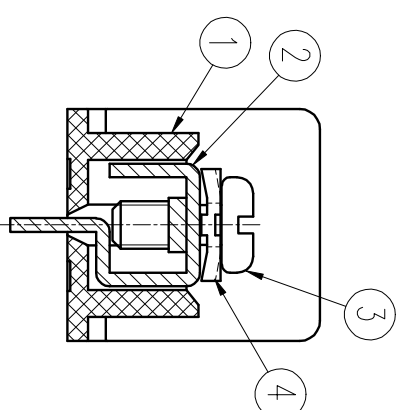
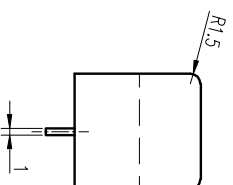
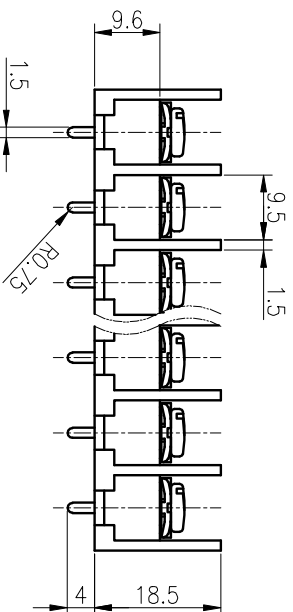
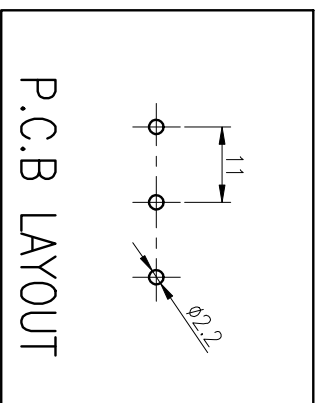
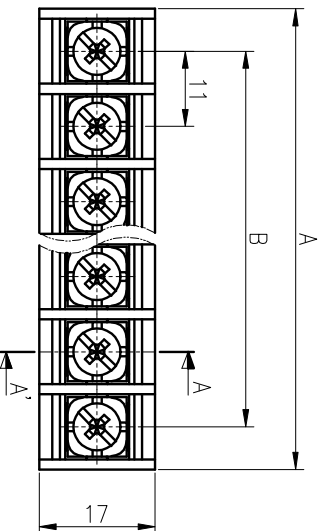


P	1	2	3	4	5	6	7	8	9	10	11	12	13	14	15	16	17	18	19	20
AD0.8	-	23.5	34.5	45.5	56.5	67.5	78.5	89.5	100.5	111.5	122.5	133.5	144.5	155.5	166.5	177.5	188.5	199.5	210.5	221.5
BD0.5	-	11.0	22.0	33.0	44.0	55.0	66.0	77.0	88.0	99.0	110.0	121.0	132.0	143.0	154.0	165.0	176.0	187.0	198.0	209.0

COMMERCIAL TOLERANCE	
0.5 to 3	± 0.12
over 3 to 6	± 0.16
over 6 to 10	± 0.18
over 10 to 18	± 0.22
over 18 to 30	± 0.25
over 30 to 50	± 0.3
over 50 to 80	± 0.35



**SPECIFICATION**

1. 정격 : 250V 20A
2. 절연 저항 : DC 500V 1000MΩ 이상
3. 내전압 : AC2000V/min
4. 사용온도범위 : -40°C ~ 85°C
5. 조임 Torque 권고치 : 5kgf·cm 이내

\*본 제품은 유해 물질 관리 기준치를 초과하지 않는 제품임 (RoHS Compliance)

DRAWN	CHECKED	CHECKED	APPROVED	THIRD ANGLE PROJECTION		TITLE		DWG No.		BRT - 154		No.	PART No.	PART NAME	MATERIAL	Q'TY	REMARKS	FINISH
W.R.KIM				DATE	UNIT	SCALE	BR - 1100C					④	BOLT	WASHER	SPCC	P	Ø8.7X8.7	Ni
09.05.08				2009.05.08	MM	1:1						③	BOLT	SCREW	SWCH10A	P	M3.5X8	Ni
							②	DM-950C	TERMINAL	BRASS	P	C2680R 1/2H 11.0	Sn					
							①	SKC-1100	FRAME	PBT	1	UL94V-0 (G30)	BK					



BEE-RYONG ELECTRONICS CO., LTD.