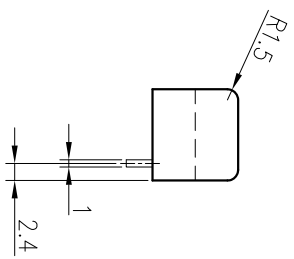
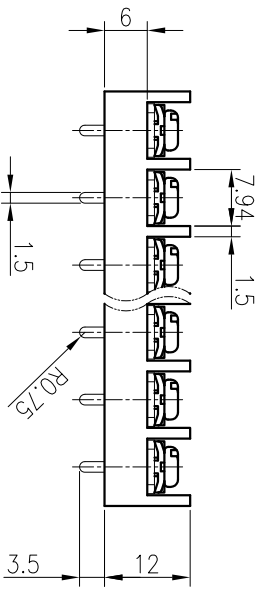
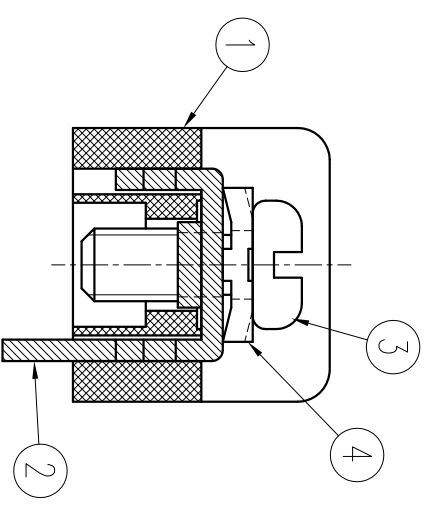
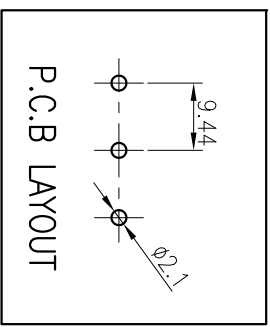
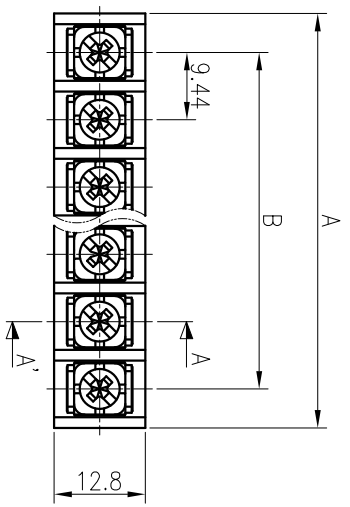


P	1	2	3	4	5	6	7	8	9	10	11	12	13	14	15	16	17	18	19	20
A40.8	-	20.38	29.82	39.26	48.7	58.14	67.58	77.02	86.46	95.9	105.34	114.78	124.22	133.66	143.1	152.54	161.98	171.42	180.86	190.3
B±0.5	-	9.44	18.88	28.32	37.76	47.2	56.64	66.08	75.52	84.96	94.4	103.84	113.28	122.72	132.16	141.6	151.04	160.48	169.92	179.36

COMMERCIAL TOLERANCE	
0.5 to 3	± 0.12
over 3 to 6	± 0.16
over 6 to 10	± 0.18
over 10 to 18	± 0.22
over 18 to 30	± 0.25
over 30 to 50	± 0.3
over 50 to 80	± 0.35



**SPECIFICATION**

1. 정격 : 250V 20A
2. 절연 저항 : DC 500V 1000MΩ 이상
3. 내전압 : AC2000V/min
4. 사용온도범위 : -40°C ~ 85°C
5. 조임 Torque 권고치 : 5kgf·cm

\*본 제품은 유해 물질 관리 기준치를 초과하지 않는 제품임 (RoHS Compliance)

DRAWN	CHECKED	CHECKED	CHECKED	APPROVED	THIRD ANGLE PROJECTION		
W.R.KIM					DATE.	UNIT	SCALE
09.04.24					2009.04.24	MM	1:1
					TITLE		
					BR - 944C		
					DWG No. BRT - 018		
④	BOL-	WASHER	SPCC	P	□7.2X7.2	Ni	
③	BOL-	SCREW	SMCH10A	P	M3.5X8	Ni	
②	DM-944C	TERMINAL	BRASS	P	C2680R 1/2H t1.0	Sn	
①	SC-944	FRAME	PBT	1	UL94V-0 (G30)	BK	
No.	PART No.	PART NAME	MATERIAL	Q'ty	REMARKS	FINISH	



BEE-PIYONG ELECTRONICS CO., LTD.