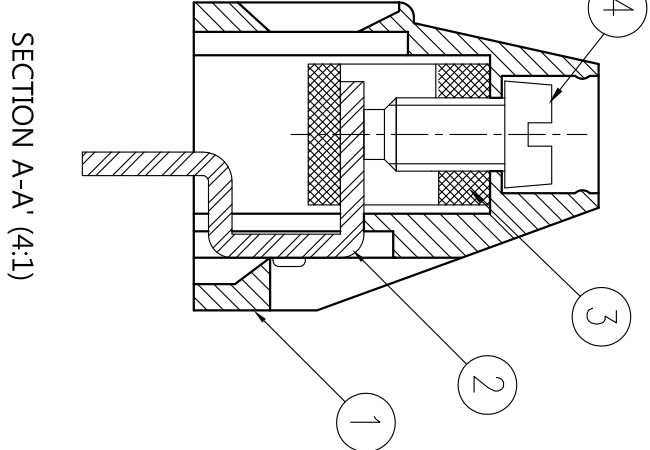
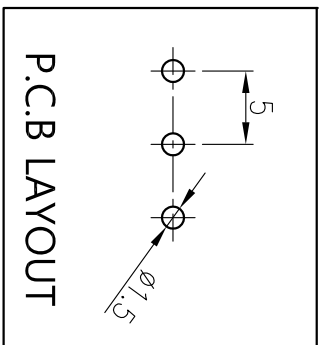
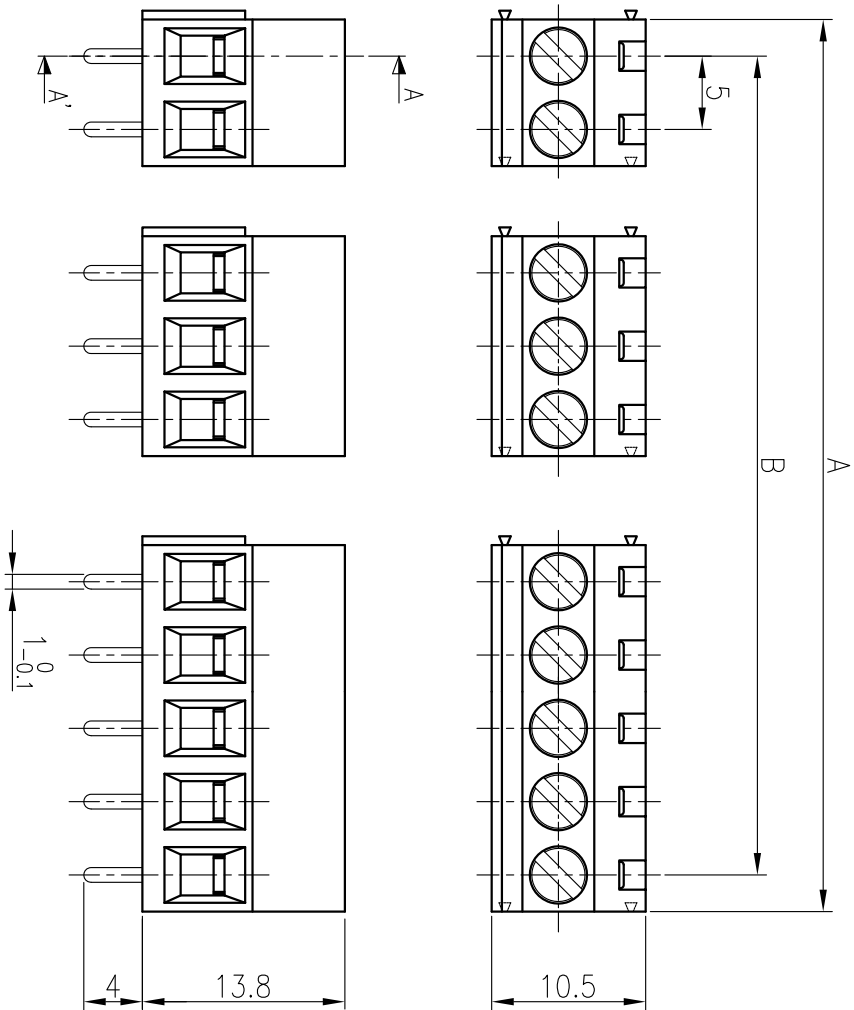


P	1	2	3	4	5	6	7	8	9	10	11	12	13	14	15	16	17	18	19	20	NP
A	-	10	15	20	25	30	35	40	45	50	55	60	65	70	75	80	85	90	95	100	NPX5
B	-	5	10	15	20	25	30	35	40	45	50	55	60	65	70	75	80	85	90	95	(NP-1)X5

SPECIFICATION

- 1.정격 : 250V 10A
- 2.절연 저항 : DC 500V 1000MΩ 이상
- 3.내전압 : AC2000V/min
- 4.사용온도범위: -40°C ~ 85°C
- 5.조임 Torque 권고치 : 4.0kgf·cm 이내

조립공차참조	COMMERCIAL TOLERANCE
P	0.5 to 3 ± 0.12
~ 5 P	over 3 to 6 ± 0.16
~ 10 P	over 6 to 10 ± 0.18
~ 15 P	over 10 to 18 ± 0.22
~ 20 P	over 18 to 30 ± 0.25
21 P 이상	over 30 to 50 ± 0.30
	over 50 to 80 ± 0.35
	over 80 to 120 ± 0.45



* 본 제품은 유해물질 관리 기준치를 초과하지 않는 제품임. (RoHS Compliance)

DRAWN	CHECKED	APPROVED	DATE	2016.06.08	UNIT	SCALE	TITLE	BR - 500C	
S.M JUNG					mm	2:1		DWG NO.	BRT - 012
16.06.08								No.	Part No.
									Part Name
									Material
									QTY
									REMARKS
									FINISH



飛龍電子株式會社

BEE-RYONG ELECTRONICS CO.,LTD

DWG NO.

BRT - 012

No.

Part No.

Part Name

Material

QTY

REMARKS

FINISH

④

BOLT

SCREW

SWCH10A

P

M2.5X4.8

NI

③

REC-500C

REC TERMINAL(사각)

FREE-CUTTING BRASS(패삭황동)

P

C3604

NI

②

DAN-500C

TERMINAL

BRASS

P

C2680R 1/2H t0.8

Sn

①

SAC-500

FRAME

PA66

1

UL94V-0

GREEN