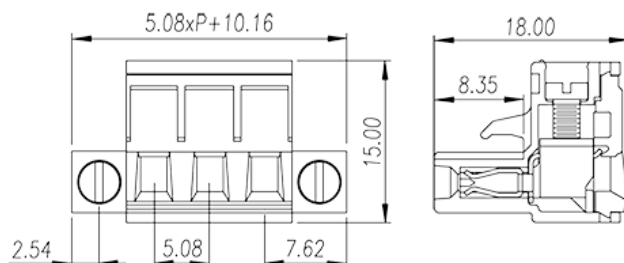
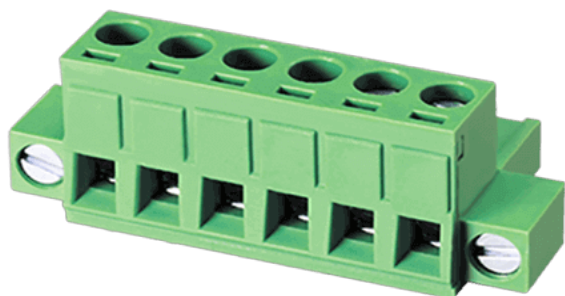


2ESDVM-XXP

PCB > PCB -

:2018-10-04 :1.1



Pitch : 5.08 mm , 300V , 15A

	PCB Connector Plug , Screw Connection
	PCB Connector Plug
(mm)	5.08
	Green(default)
	Screw Connection
	With screw flange
(mm)	5.08xP+10.16
(mm)	18.00
(mm)	15.00
()	02~24
	Single level
	PA66
	I
UL 94	V0
	Copper Alloy
	Tinned



-IEC

(A)	18
(II/2)(V)	600
(III/2)(V)	320
(III/3)(V)	250
(II/2)(KV)	4
(III/2)(KV)	4
(III/3)(KV)	4
(mm ²)	0.2
(mm ²)	2.5
(mm ²)	0.2
(mm ²)	2.5
(mm ²) , ,	0.25
(mm ²) , ,	2.5
(mm ²) , ,	0.25
(mm ²) , ,	2.5
2 (mm ²)	1.5
2 (mm ²)	1.5
(mm ²) 2 , ,	0.5
(mm ²) 2 , ,	1
2 (mm ²) , ,	0.5
2 (mm ²) , ,	1
	M2.5
Width)(mm) (Blade thickness x	0.6x3.5
Philips	PH1
(N.m)	0.5
	7~8

-UL

(UL/CUL Group B)(V)	300
---------------------	-----



(UL/CUL Group B)(A)		15
(UL/CUL Group D)(V)		300
(UL/CUL Group D)(A)		10
UL/CUL	AWG	28
UL/CUL	AWG	12
UL/CUL	AWG	30
UL/CUL	AWG	12

&

가	(YES or NO)	YES
		115
		-40

UL

(Group B)(AWG)		28~12
(Group B)(V)		300
(Group B)(A)		15
(Group D)(AWG)		28~12
(Group D)(V)		300
(Group D)(A)		10

CUL

(Group B)(AWG)		28~12
(Group B)(V)		300
(Group B)(A)		15
(Group D)(AWG)		28~12
(Group D)(V)		300
(Group D)(A)		10

CSA

(AWG)		28~12
(V)		300
(A)		15

VDE

--	--	--



(mm ²)	0.2~2.5
(V)	600
(A)	18

