

**PCC7****Series****3.96 or 4.00 x 4.4 mm****GRID PATTERN DUAL LINE CONNECTORS****General**

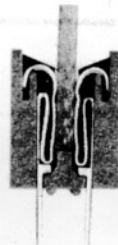
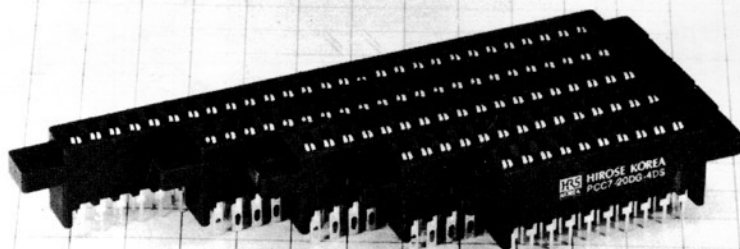
PCC7 series are 3.96 or 4.00mm centers dual line connectors featuring bellows contacts of 8 contact point in 2 steps which offer excellent electrical and mechanical characteristics.

20,28,36,44,56 and 72 pin in 4.00mm centers are line-uped with Solder Eyelet or Dip Solder terminals. A polarizing key is available for protection of coupling errors.

**Material and Finish**

Molding : UL94V-O, Glass-reinforced Polycarbonate, Blue

Contact : Phosphor Bronze, Whole gold Plating over nickel

**Electrical and Environmental Performance**

Current Rating : 3A

Voltage Rating : AC600V, DC850V

Insulation Resistance : 5000MΩ MIN at DC500V

Contact Resistance : 15mΩ MAX at DC1A

Voltage Withstanding : AC1800V for a minute

Insertion and

Extraction Force : 57—450grs/contact at 1.575±0.002mm steel gauge

Humidity : MIL-STD-202, Insulation Resistance 1000MΩ MIN at 40±2°C, 90—95%, and 96 hours

Vibration : MIL-STD-202, No visual damage nor looseness of parts at 10—55Hz with 1.5mm amplitude

Shock : MIL-STD-202, No visual damage nor looseness of parts at 50G in 3 directions

Temperature Cycling : MIL-STD-202, No visual damage at -55 to +85°C

Durability : Contact Resistance 15mΩ MAX after 500 times consecutive coupling operation

Salt Spray : MIL-STD-202, No heavy corrosion at 5%, 35°C Salt Water spray for 48 hours

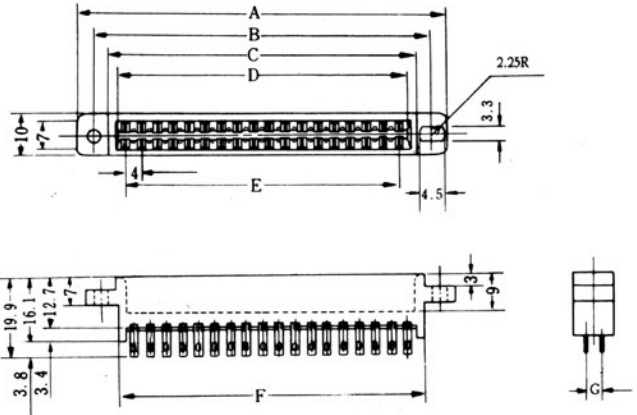
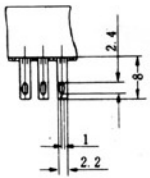
Low Level Circuit : MIL-C-21097, Contact Resistance 15mΩ MAX at DC1mA

**PCC7****Series**

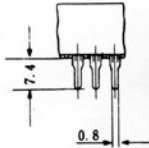
3.96 or 4.00 x 4.4 mm

**GRID PATTERN DUAL LINE CONNECTORS**

4.00mm Centers Type

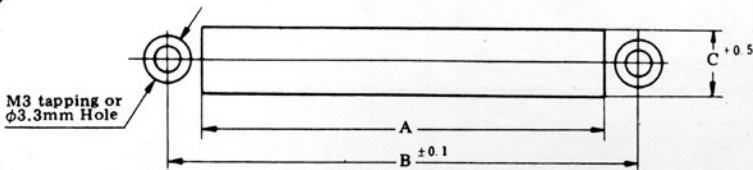
**Terminals**

Eyelet

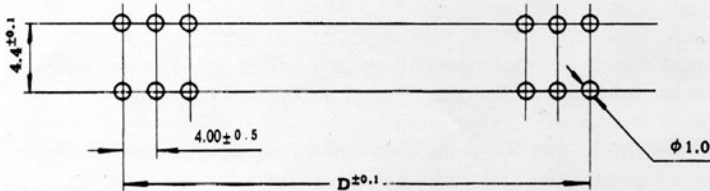


Dip Solder

No. of pin	Part No.	A	B	C	D	E	F	G
20	PCC7-20DG-4E	58	50	43	41	36	43	4.0
	PCC7-20DG-4DS							4.4
28	PCC7-28DG-4E	75	67	60	57	52	59	4.0
	PCC7-28DG-4DS							4.4
36	PCC7-36DG-4E	92	84	77	73	68	76	4.0
	PCC7-36DG-4DS							4.4
44	PCC7-44DG-4E	109	101	93	89	84	93	4.0
	PCC7-44DG-4DS							4.4
56	PCC7-56DG-4E	133	125	117	113.5	108	117	4.0
	PCC7-56DG-4DS							4.4

**Mounting Cutout**

No. of pin	20	28	36	44	56
A	44	61	78	94	118
B	50	67	84	101	125
C			11.5		11.0

**Dip Soldering Pattern**

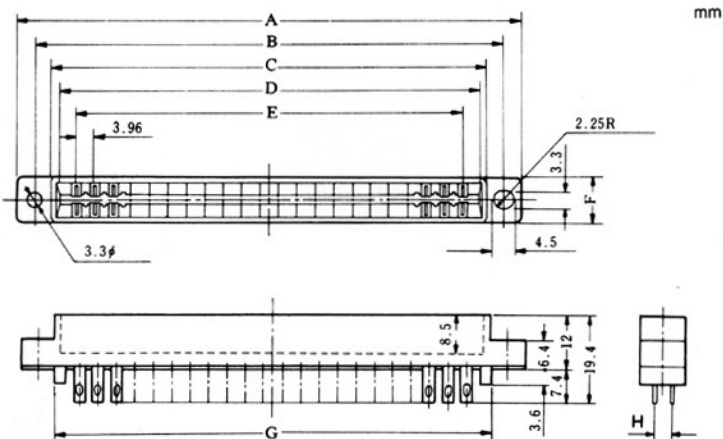
No. of pin	20	28	36	44	56
D	36	52	68	84	108

**PCC7****Series**

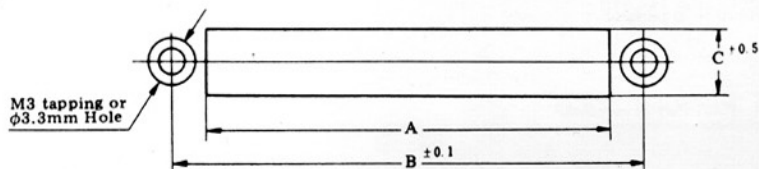
3.96 or 4.00 × 4.4 mm

**GRID PATTERN DUAL LINE CONNECTORS**

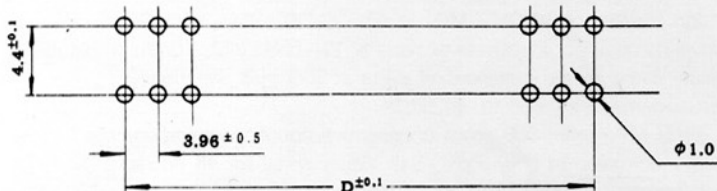
3.96mm Centers Type



No. of pin	Part No.	A	B	C	D	E	F	G	H
20	PCC7E-20DG-3.96E	63	54.8	47.3	43.8	35.64	9	46.3	4.0
	PCC7E-20DG-3.96DS								4.4
36	PCC7E-36DG-3.96E	94.4	86.5	79	75.5	67.32	9	78	4.0
	PCC7E-36DG-3.96DS								4.4
44	PCC7E-44DG-3.96E	110.2	102.4	95	91.4	83.16	9	94	4.0
	PCC7E-44DG-3.96DS								4.4
56	PCC7E-56DG-3.96E	133.7	126	118.1	115	106.98	11.1	117.1	4.0
	PCC7E-56DG-3.96DS								4.4
72	PCC7E-72DG-3.96E	166	158	150	146.8	138.68	11.1	149	4.0
	PCC7E-72DG-3.96DS								4.4

**Mounting Cutout**

No. of pin	20	36	44	56	72
A	48.3	80.0	96.0	119.1	151.0
B	54.8	86.5	102.4	126.0	158.0
C	10		12		

**Dip Soldering Pattern**

No. of pin	20	36	44	56	72
D	35.64	67.32	83.16	106.98	138.68