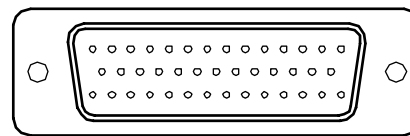
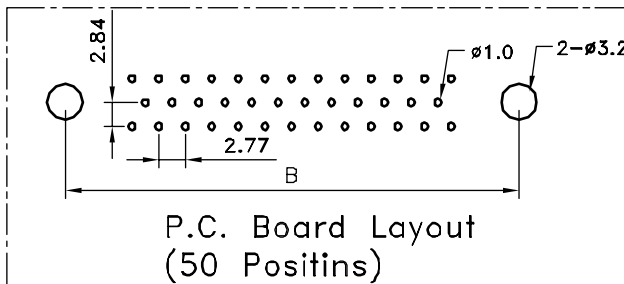
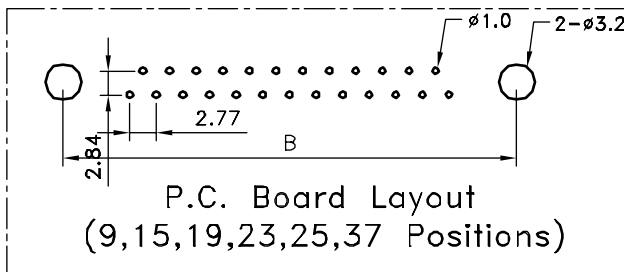
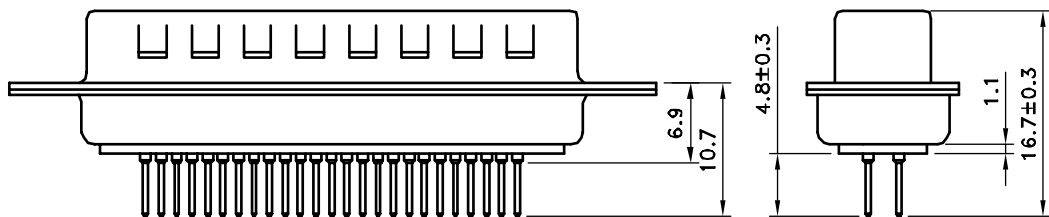
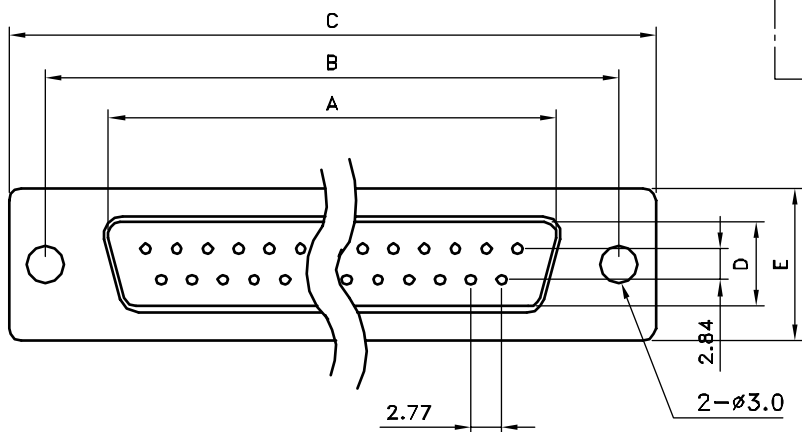


Specifications:
 Current rating: 3 A AC, DC
 Voltage rating: 250V AC, DC
 Dielectric Withstanding: AC 1000V
 Temperature rating: -40°C ~ +85°C
 Contact resistance: 30mohm max.
 Insulation resistance: 5,000Mohm min.

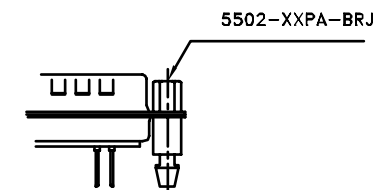
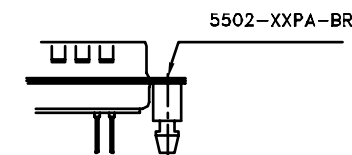
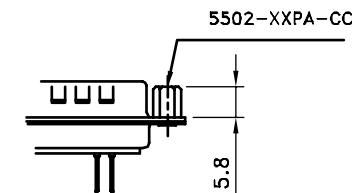
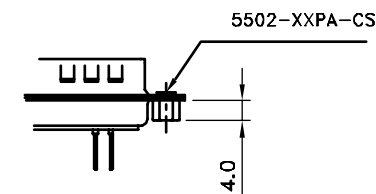
Materials:
 Insulator: PBT (UL94V-0)
 Contact material: Brass
 Plating: Gold flash
 Shell: Steel, Nickel plated



50 POSITIONS

HOW TO ORDER
 5502-XXPA-XX-XX

CS: REAR RIVET
 CC: FRONT RIVET
 BR: BOARDLOCK-NUT RIVET
 BRJ: HEX SCREW + HEX NUT
 BLANK: STANDARD
 01: FULL GOLD
 02: Selective Gold Plated
 PA: STAMP PIN MALE
 NO. OF POSITIONS



POSITIONS	A	B	C±0.5	D	E
9	16.92	24.99	30.81	8.38	12.50
15	25.25	33.32	39.14	8.38	12.50
19	30.60	38.86	44.80	8.38	12.50
23	35.90	44.30	50.30	8.38	12.50
25	38.96	47.04	53.04	8.38	12.50
37	55.42	63.50	69.32	8.38	12.50
50	52.81	61.11	66.93	11.07	15.37

REV	DATE	FILE	BY
F	07-14-2003		Jerry Chen
E	02-23-2003	PCB LAYOUT	Jerry Chen
D	02-21-2003	5502-XXPA-XX-XX	Jerry Chen
C	11-18-2002	5502-XXPA-XX-XX	Jerry Chen
B	07-24-2002	5502-XXPA-XX-XX	Jerry Chen
A	06-14-1999	5502-XXPA-XX-XX	Jerry Chen

DRAWN: Jerry Chen
 CHECKED: Ruby
 APPROVAL: Mike

GENERAL TOLERANCE:
 .X = ±0.2
 .XX = ±0.15
 UNIT: MM
 SCALE:
 SHEET: 1 / 1
 PROJECTION:



DESCRIPTION: D-SUB STANDARD DIP PCB STAMP PIN
 PART NO: 5502-XXPA-XX-XX

SIZE
A4