

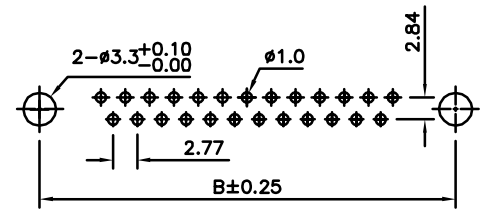
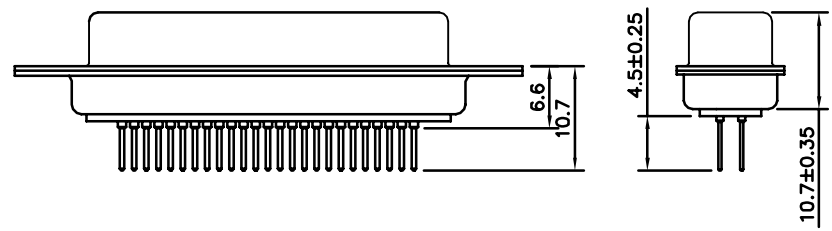
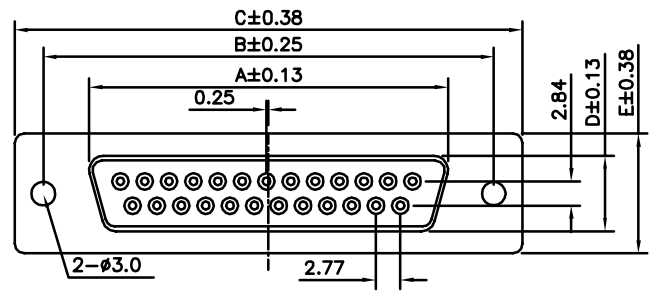
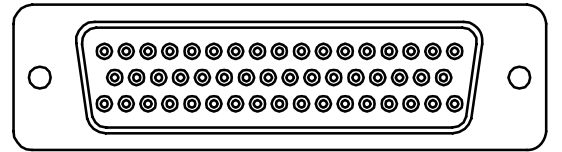
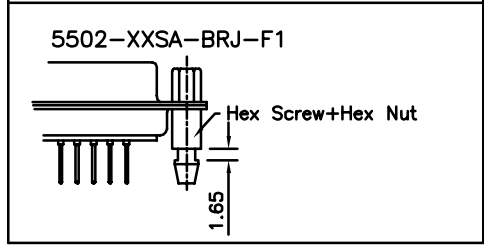
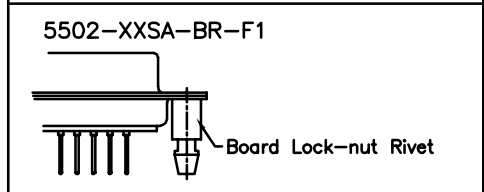
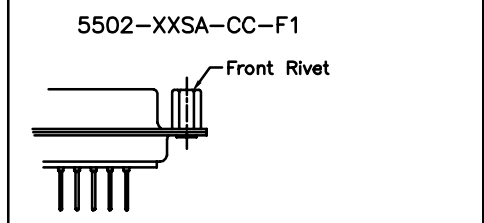
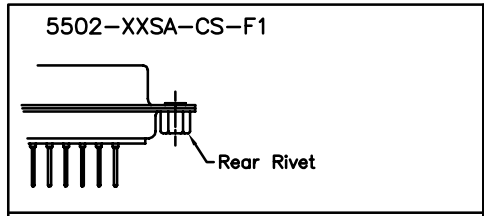
1

2

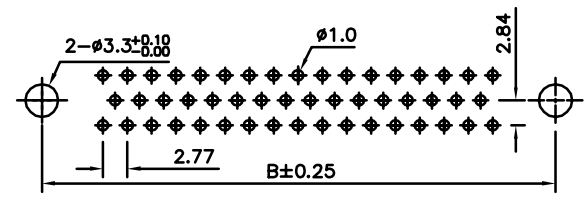
3

4

5



P.C. Board Layout  
(9,15,25,37 Positions)



P.C. Board Layout  
(50 Positins)

Specifications:  
 Current rating:3.0A AC,DC  
 Voltage rating:250V AC,DC  
 Temperature range:-40°C ~ +85°C  
 Contact resistance:30mohm max.  
 Insulation resistance: 5,000Mohm min.  
 Withstanding voltage:1,000V AC/Minute  
 Materials:

Insulator:High Temp. Plastic (UL 94V-0)  
 Contact :Brass  
 Shell :Steel,Spcc  
 Contact Plating :Selective Gold Plated  
 Shell plating:Tin Plated

How To Order  
 5502-XXSA-XX-XX-XXF1

- Blank:White(Standard Color)
- BK:Black; BU:Blue
- Blank:Standard type
- CS:Rear Rivet
- CC:Front Rivet
- BR:Board Lock-nut Rivet
- BRJ:Hex Screw+Hex Nut
- 01:Gold Plated
- 02:Selective Gold
- SA:Stamp Pin Female
- No.Of Positions

Pos	A	B	C	D	E
9	16.33	24.99	30.81	7.90	12.50
15	24.66	33.32	39.14	7.90	12.50
25	38.38	47.04	53.04	7.90	12.50
37	54.84	63.50	69.32	7.90	12.50
50	52.43	61.11	66.93	10.74	15.37

RoHS Compliant

F					
E					
D					
C					
B					
A	11-Aug-2005	(PC0052)	Cel King		
REV	DATE	FILE	BY		

DRAWN:  
Cel King

CHECKED:  
Jeremy Liu

APPROVAL:  
Mike Wu

GENERAL TOLERANCE:  
 .X=±0.2  
 .XX=±0.15

UNIT: MM  
 SCALE: 1:1  
 SHEET: 1 / 1  
 PROJECTION:

**繼德工業股份有限公司**  
**Neltron Industrial Co., Ltd.**

DESCRIPTION:  
D-SUB STANDARD DIP PCB STAMP PIN

PART NO:  
5502-XXSA-XX-XX-XXF1

SIZE  
**A4**