

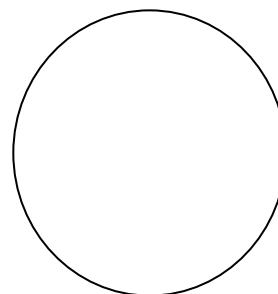
SPECIFICATION FOR APPROVAL

PRODUCT	5Vdc1000mA SPS
MODEL	SW06-05001000-EK
PART NO.	SW06-05001000-EKD2
VER:	A
CUSTOMER	PWK
DATE	20130628

本 电 器 符 合	MEETSAFETYSTD., MEET ROHS MEET CEC STD.
AC PIN:	2

希望回签日/EXPECTED FEEDBACK BEFORE: 2013年7月8日

发行印



*未签回而下订单即视同认可!

生产工厂 /MANUFACTORY	设计验证/日期 DESIGN VERIFIED BY	设计师/日期 DESIGNED BY	工程确认/日期 Engineering Verification BY	QE 验证/日期 QE VERIFIED BY
TAE				

SHENZHEN TOP-ASIA ELECTRONICS CO., LTD.

地址: 深圳市宝安区西乡后瑞新瑞物流园 B 栋三楼

Add: 3F//A&B .XinRui Logistics pack, HouRui, HuangTian, Xixiang Town
, Baoan, Shenzhen, P. R. C.

业务联系: 채선국 (CAI SEON GUK) 070-8860-1863

E-mail: hdt7451@hanmail.net

Tel : 070-8860-1863

P. C: 518108

Fax: 031-769-1863

PRODUCT SPECIFICATIONS

Index

1. Scope	4
2. Electrical Characteristics test	4
2.1 Input Characteristic	4
2.1.1 Input Voltage and Frequency	4
2.1.2 Input current	4
2.1.3 Ac inrush current	4
2.1.4 Input leakage current	4
2.1.5 Efficiency	4
2.1.6 Stand-by power consumption	4
2.2 Output Characteristic.....	5
2.2.1 Output voltage and current	5
2.2.2 Output leakage current	5
2.2.3 Startup and Turn-on Delay	5
2.2.4 Overshoot	5
2.2.5 Short-Circuit Protection (SCP)	5
2.2.6 Over Current Protection (OCP)	5
2.2.7 Over Voltage Protection (OVP)	5
2.2.8 Loop Stability	5
3. EMC-Specification	6
4. Safety details:	6
5. Mechanical Specifications	6
5.1 Physical	6
5.2 Input and Output Configuration	6
附图:	
6. DC Cord.....	1
7. Production of appearance drawing	1
8. Label	1
9. PE BAG.....	1
10. Packing.....	2
11. BOM.....	2

PRODUCT SPECIFICATIONS

1 Scope:

This document describes power supply unit for the I.T.E.. This document covers all electrical, mechanical, environmental and testing aspects of the power supply unit. The power supply unit must comply with all of the requirements of this specification and the drawings and specifications referenced here in.

2 Electrical Characteristic test:

2.1 Input Characteristics:

2.1.1 Input Voltage and Frequency

The power supply shall meet all specifications when powered from the following sources.

Voltage Range	Line Frequency	Minimum Voltage	Maximum Voltage
100-240Vac	47 ~ 63 Hz	90Vac	264 Vac

2.1.2 Input Current

The maximum input current shall be less than 1.5A.

2.1.3 AC Inrush Current

Peak inrush current shall be limited to 30A within 10ms at 264Vac(Cold Start).

2.1.4 Input Leakage Current

The leakage current shall not exceed 0.25 mA.

2.1.5 Efficiency

62% Minimum

2.1.6 Stand-by power consumption

0.5W Max At AC nominal input@output min load

PRODUCT SPECIFICATIONS

2.2 Output Characteristics:

2.2.1 Output Voltage and Current

The power supply shall have one regulated DC output of **+5V**.

The table below defines the total regulation band for the output, which includes line regulation, load regulation, transient response, and effects due to environmental conditions and aging. Voltage shall be measured at the power supply output connector

Mode	Output Current Range		Output Voltage range		Ripple Noise
	Min.	Max.	Min.	Max.	Max.
C.C.	0mA	1000mA	4.7V	5.3V	80mVpp

Ripple & Noise Test: Add 0.1uF/50V ceramic capacitor and 10uF/50V capacitor across the output terminal. Measured with 20MHz Bandwidth Oscilloscope.

Line regulation: <1% ; Load regulation: <6%

2.2.2 Output Leakage Current

With the A/C input unplugged, apply a **5V D/C** source to the output as specified , The leakage current drawn from the D/C source should be less than 100uA.

2.2.3 Startup and Turn-on Delay

Power supply shall be able to start up into a resistive load up to the maximum rated current with maximum load capacitance of 1,000uF. The elapsed time between the application of input power and the attainment of output voltage to the nominal value shall not exceed **1 second**.

2.2.4 Overshoot

At turn on, the output voltage shall not exceed steady state by more than **10%**.

2.2.5 Short-Circuit Protection

5.0W Max Auto recovery.

2.2.6 Over Current Protection

3.5A Max OCP Method :Auto recovery

2.2.7 Over Voltage Protection

10V Max OVP Method: Voltage limit

2.2.8 Loop Stability

The output shall remain stable for all input and output conditions stated in 2.1.1

Customer:
Model: SW06-05001000-EK
SPECIFICATION NO.:
Part no.: SW06-05001000-EKD2

Switching Mode Power Supply

PRODUCT SPECIFICATIONS

3 EMC-Specification

Noise-suppressed acc: EN 55022

4 Safety details:

Standards/class	:	EN60950	ClassII
Voltage rating	input	:	100Vac-240Vac 50-60Hz
	Output	:	5Vdc 1.0 A
Separation (prim-sec)	:	galvanic , via transformer	
Creepage distance	:	>= 8.0mm	
And air path	:	>=6.0mm	
High-voltage test	:	>=3.0KV	
Leakage current	:	Maximum leakage current is 10mA	
Application range	:	Information technology equipment Including electrical business equipment	
Ambient temperature	:	0°C to +40°C , 10 to 90% rhd	

5 Mechanical Specifications

5.1 Physical

Case material: PC
Dimensions: 63mm(L) x 38.5mm(W) x 29mm(H) (not include input pins)

5.2 Input and Output Configuration

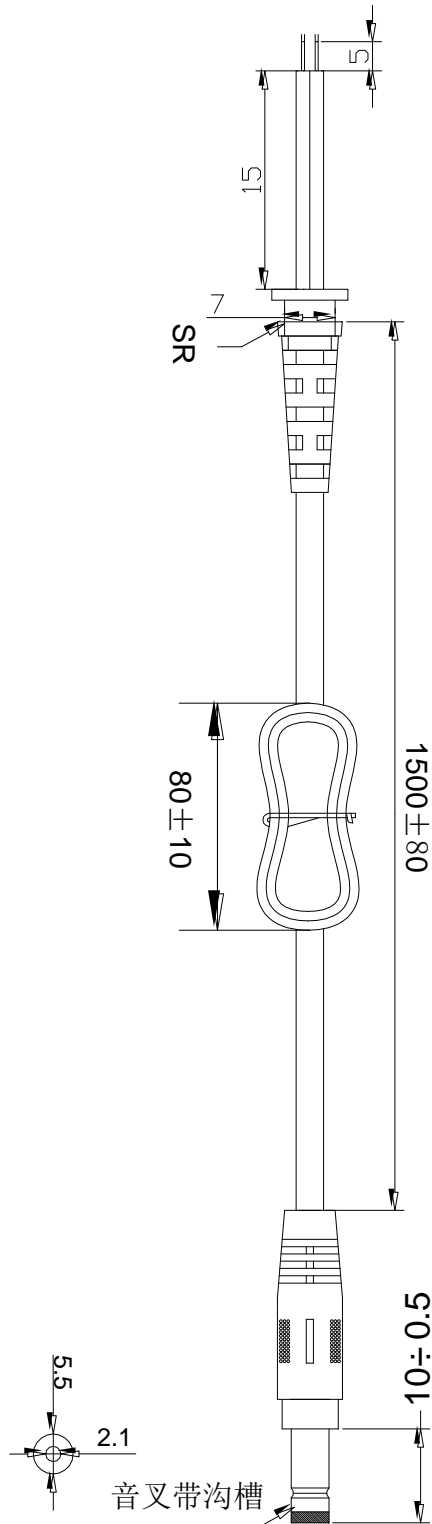
Input Pin: EK pins
Output Connector: 2.1*5.5*10mm "H" type 音叉带沟槽
Polarity: Center positive
Cord: 1.5m AWM2464 24AWG

Customer:
Model: SW06-05001000-EK
SPECIFICATION NO.:
Part no.: SW06-05001000-EKD2

Switching Mode Power Supply

PRODUCT SPECIFICATIONS

6 DC Cord drawing (black) :



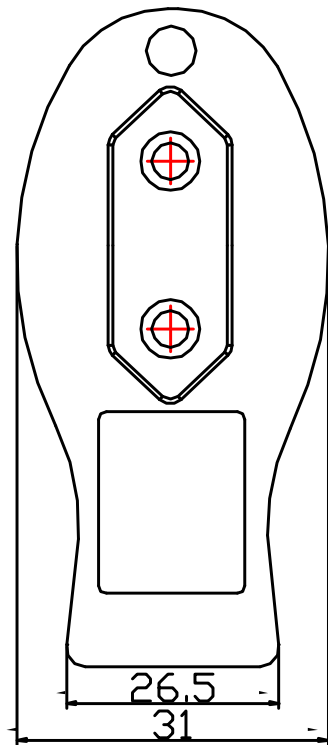
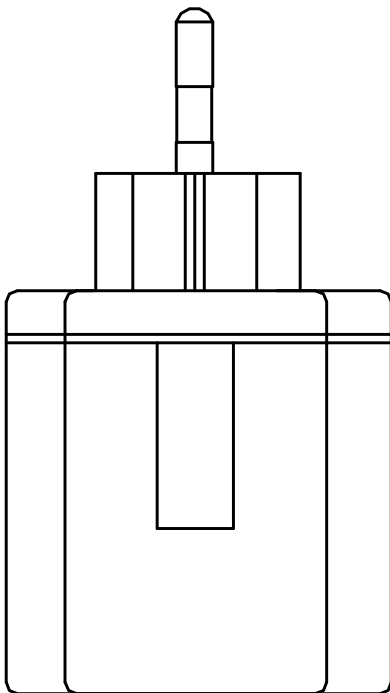
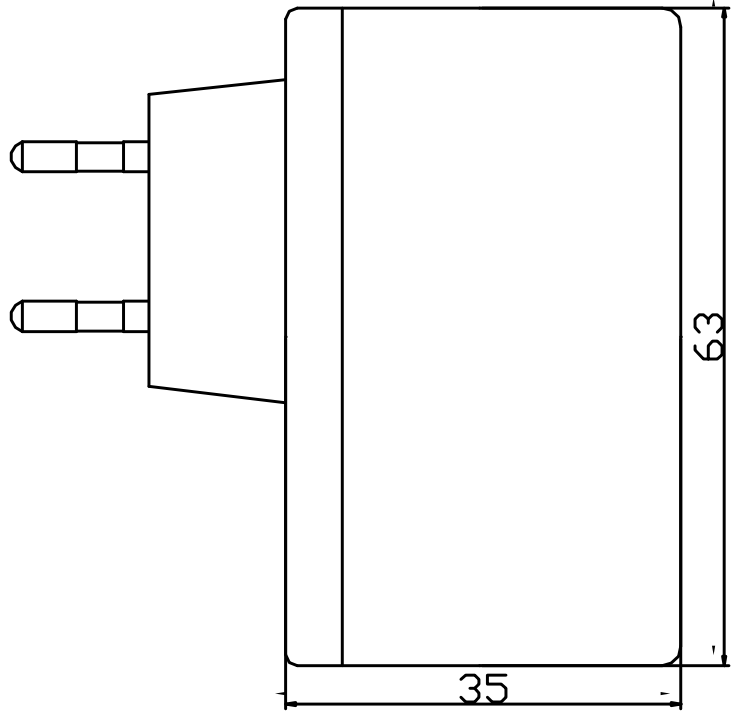
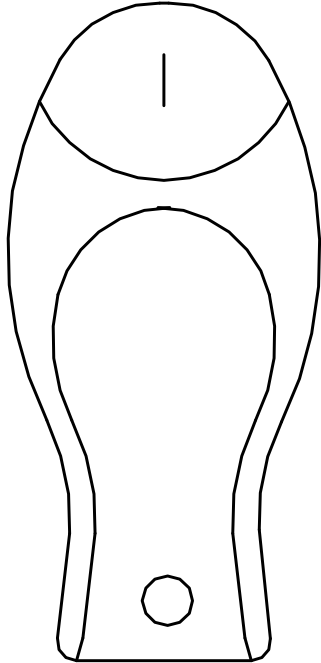
WIRE:AWM2464 24AWG
DC PLUG: Φ 5.5*2.1*10mm
COLOR:BLACK

Customer:
Model: SW06-05001000-EK
SPECIFICATION NO.:
Part no.: SW06-05001000-EKD2

Switching Mode Power Supply

PRODUCT SPECIFICATIONS

7 Production of appearance drawing(black):




Customer:
Model: SW06-05001000-EK
SPECIFICATION NO.:
Part no.: SW06-05001000-EKD2





Switching Mode Power Supply


PRODUCT SPECIFICATIONS

8 Label:

POWER-TEK ADAPTER

품명 : 직류전원장치
모델명 : SW06-05001000-EK
정격입력 : AC100-240V,50/60Hz,1.5A
정격출력 : DC5.0V,1.0A 
A/S 센터 :
제조사 : SHENZHEN TOP-ASIA ELECTRONICS CO.,LTD.
제조국 : 중국

 정보사무기기용
최저소비효율기준 만족 제품

HU10553-11007

MADE IN CHINA

备注:

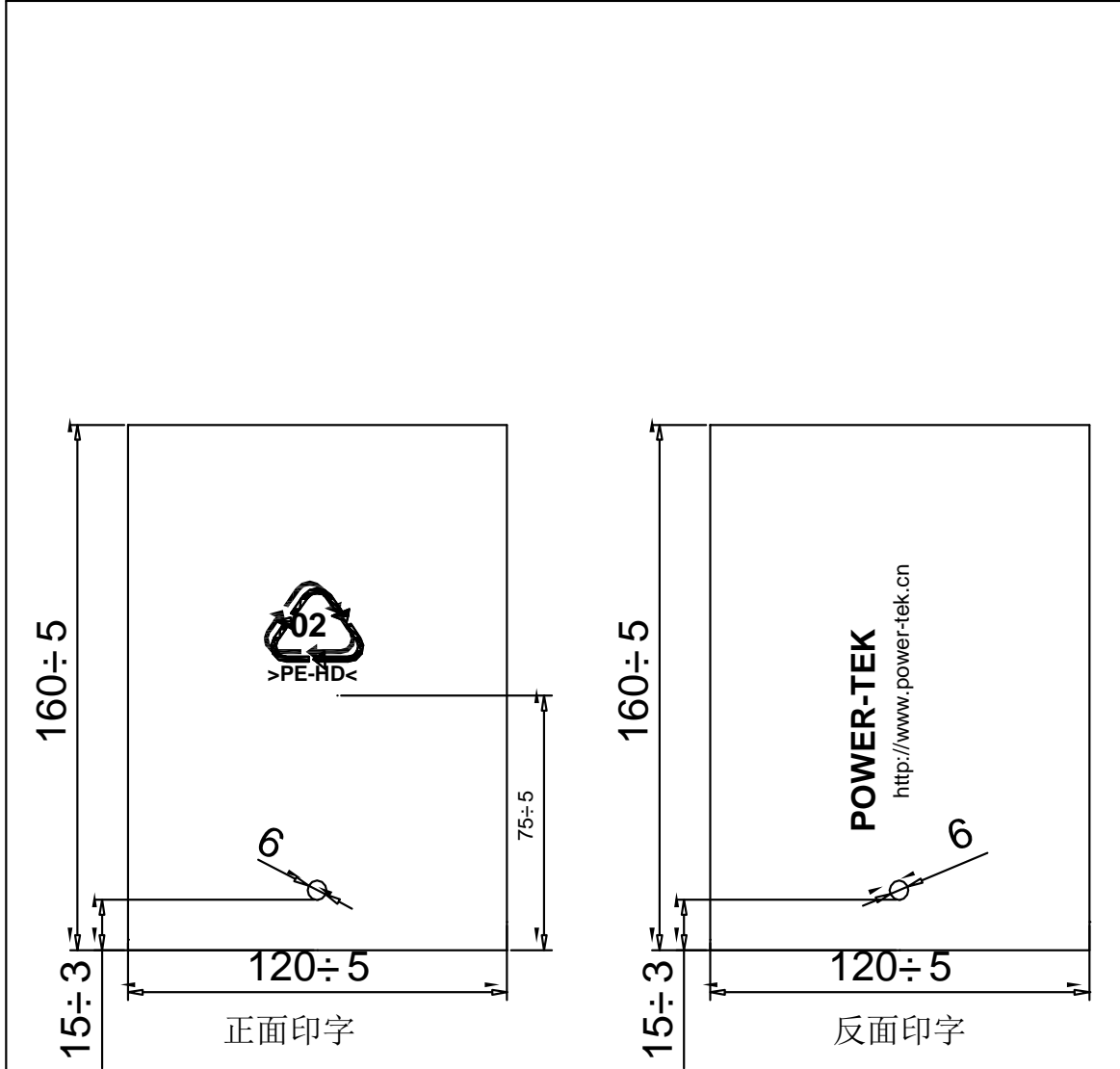
铭牌颜色: 灰底黑字.

Customer:
 Model: SW06-05001000-EK
 SPECIFICATION NO.:
 Part no.: SW06-05001000-EKD2

Switching Mode Power Supply

PRODUCT SPECIFICATIONS

9. PE BAG



NOTE:

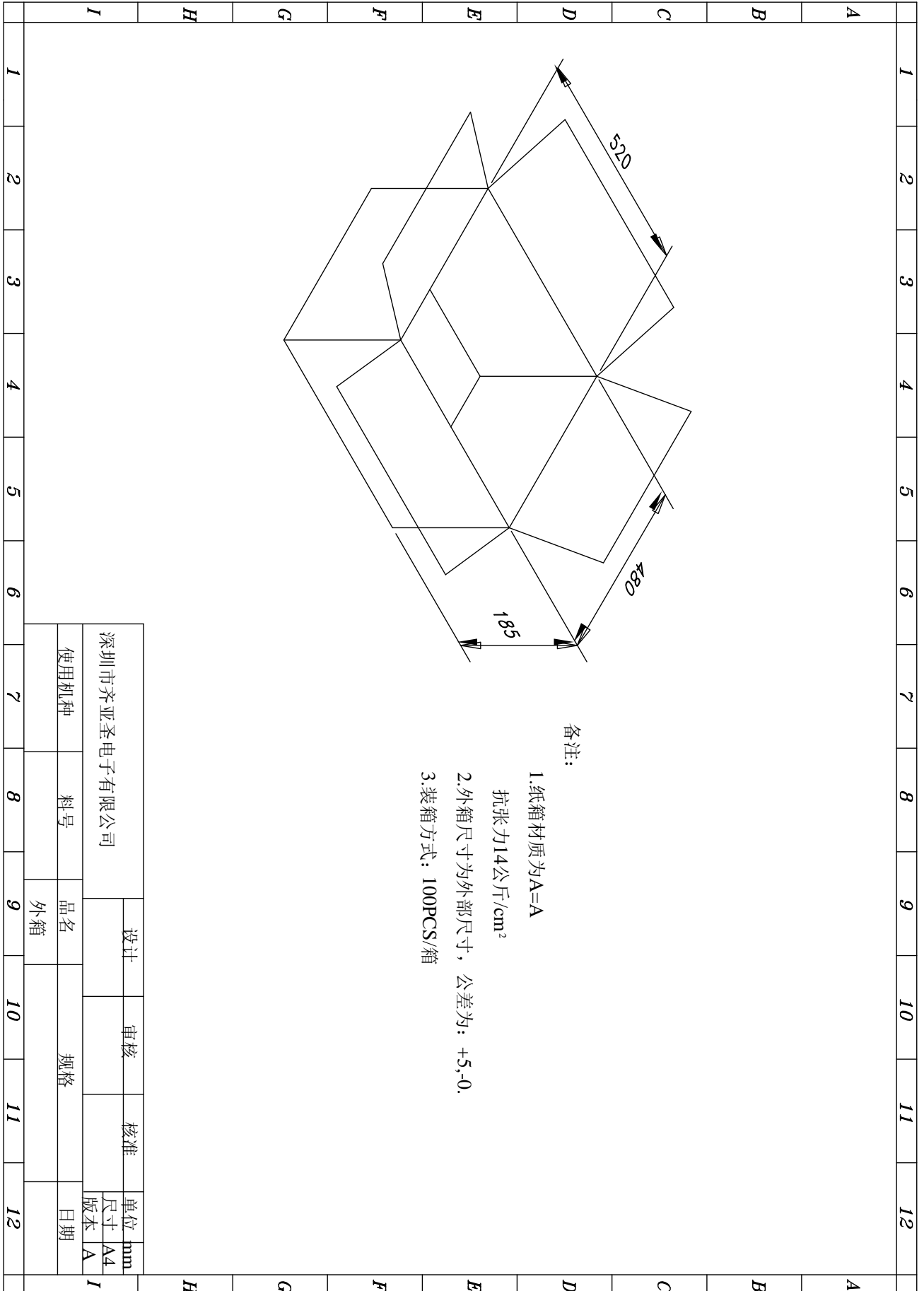
1. 材质: PE材质
2. 厚度: 0.03mm
3. 颜色: 透明
4. 印字颜色: 黑色

THIRD ANGLE PROJECTION 第三角法		版面 SHEET SIZE	材质 MATERIAL	比例 SCALE	单位 UNIT	齐亚圣电子有限公司 TOP-ASIA ELECTRONICS CO.,LTD			
承认 APPROVED	确认 CHECKED	检图 CHECKED	制图 DRAWING	公差 TOLERANCE		图名 NAME	PE袋图	页码 PAGE	1/1
			杨竣翔	L < 4	±0.05	±0.08	±0.10	±0.20	
				4 < L < 20	±0.08	±0.10	±0.20	±0.30	
				20 < L < 50	±0.10	±0.15	±0.30	±0.40	
				50 < L < 200	±0.15	±0.25	±0.40	±0.60	
				200 < L	±0.20	±0.40	±0.50	±0.80	
				图号 DWG. NO.				日期 DATE	06/27.13

Customer:
 Model: **SW06-05001000-EK**
 SPECIFICATION NO.:
 Part no.: **SW06-05001000-EKD2**

Switching Mode Power Supply

PRODUCT SPECIFICATIONS



备注:

- 1. 纸箱材质为A=A
抗张力14公斤/cm²
- 2. 外箱尺寸为外部尺寸，公差为：+5,-0.
- 3. 装箱方式：100PCS/箱

深圳市齐亚圣电子有限公司		设计	审核	核准	单位	mm
使用机种	料号	品名	规格	尺寸	A4	A
	外箱			日期		

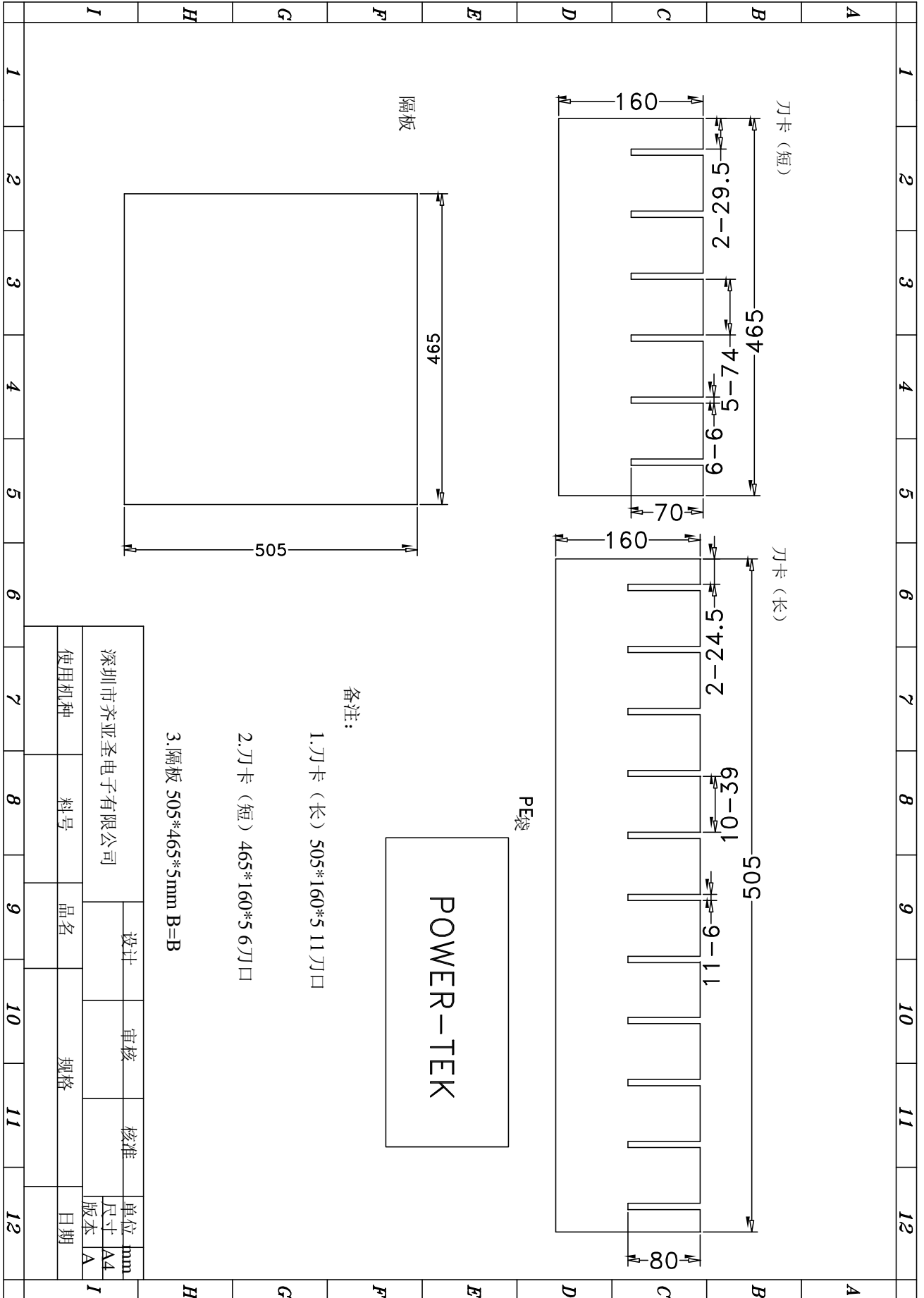
Customer:

Model: SW06-05001000-EK

SPECIFICATION NO.:

Part no.: SW06-05001000-EKD2

PRODUCT SPECIFICATIONS



备注:

1.刀卡 (长) 505*160*5 11刀口

2.刀卡 (短) 465*160*5 6刀口

3.隔板 505*465*5mm B=B

深圳市齐亚圣电子有限公司		设计	审核	核准	单位	mm
使用机种	料号	品名	规格	日期	尺寸	A4
					版本	A

Customer:
 Model: SW06-05001000-EK
 SPECIFICATION NO.:
 Part no.: SW06-05001000-EKD2

Switching Mode Power Supply

PRODUCT SPECIFICATIONS

深圳市齐亚圣电子有限公司

地址: 深圳市宝安区西乡街道后瑞工业区 B 栋 3 楼 Tel: 0755-29602774, Fax:0755-81458001

产品 BOM 资料表

产品编号: SW06-05001000-EKD2

产品名称: 5V1A EK 立式 D2 版本电源适配器 KR030

展开阶数	子件编号	子件名称	子件用量	耗损率	位号
1	A02009930070	环保 1.0mm 无铅锡线 sn99.3cu0.7	0.0004KG	0.3%	锡面修补, 焊 DC
1	A07000550050	环保宽 55mm 厚 0.05 封箱胶	0.0189M	0.3%	封箱
1	A120000510F0	环保 AP-688/HN3051 硅胶	0.0011 公斤	0.3%	线材, T1
1	C01520480170	外箱 L520*W480*H185mm A=A 外销 箱带 POWER-TEK 印字	0.01PCS	0.3%	装箱
1	C03060501027	5V/1A 立式 EK 标签(灰底黑字)	1PCS	0.3%	下盖
1	C03FRQCPASS0	QC PASS 易碎贴(周期颜色变换) φ 15mm	1PCS	0.3%	
1	C07160012000	PE 袋 160*120*0.06mm 120mm 单面开 口加孔印可“回收”标示和 made in china 带 POWER-TEK 字样	1PCS	0.3%	包组立 OK 品
1	C08465145050	短 6 刀卡长 465*宽 160*厚 5mm B=B	0.11PCS	0.3%	装箱
1	C08505145050	长 11 刀卡长 505*宽 160*厚 5mm B=B	0.06PCS	0.3%	装箱
1	C09505465050	长 505*宽 465*厚 5mm 隔板 B=B	0.02PCS	0.3%	装箱
1	ESA250065025	长 25*宽 6.5*厚 2mm 黑色防火海 绵单面贴	1PCS	0.3%	贴于 PCB 锡面
1	EWDCB10055C3	红色导线 UL1007/22#0.16/17 总长 55mm 9/3.5mm 镀锡 80°C 300V AC	2PCS	0.3%	N. L
1	EWJBB21540S0	DC 线 5.5*2.1*10mm 音叉直头带出台 UL2464 24#0.16/11 L=1500+40mm 6W 立式 SR OD=3.0mm	1PCS	0.3%	FOR PCB
1	PCDS05010V37	5V1A 插件 OK 板 RM6203+LED	1PCS	0%	
2	A01009930070	环保无铅纯锡条	0.0007KG	0%	PCB 波峰焊接
2	A0300TF88701	环保无铅 TF-88-7 消光型助焊剂	0.0005L	0%	PCB 波峰喷雾
2	ECA102DM1YE0	Y1 电容 102M/400V P=10MM L=3.5±0.4mm 厚度≤3.8mm	1PCS	0.3%	CY1
2	ECA107DM1020	电解电容 LOESR100UF/16V φ5*11mm L=3.5±0.2mm	1PCS	0.3%	C9
2	ECA108DM1000	电解电容 LOESR 1000UF/10V φ8*12mm L=3.5±0.2mm	1PCS	0.3%	C8
2	ECA472DJ1LM0	高压米拉电容 472J/630V P=5mm L=3.5±0.4mm 厚度≤4mm	1PCS	0.3%	C3
2	ECA475DM1DE0	电解电容 4.7UF/400V φ8*12mm L=3.5±0.2mm	2PCS	0.3%	C2, C1
2	ECA476DM1050	电解电容 LOESR47UF/35V φ5*11mm L=3.5±0.2mm	1PCS	0.3%	C4
2	ECA681DK0B60	独石电容 681/50V P=5mm L=3.5±0.4mm	1PCS	0.3%	C5
2	EDIDDN4007T0	编带 52mm 整流二极管 1N4007 D0-41	6PCS	0.3%	D1-D4, D6, D8
2	EDIDTSR260T0	编带肖特基二极管 SR260 D0-15 2A/60V YS 品牌	1PCS	0.3%	D7
2	EDILER3000D0	LED 红色普亮雾状 φ3mm	1PCS	0.3%	LED
2	EICUCR6203D0	CR6203 IC DIP-8	1PCS	0.3%	U1
2	EICUPC817CD0	光耦 PC817C DIP-4	1PCS	0.3%	U2
2	EICUUTC431D1	控制 IC UTC431±0.5% T0-92	1PCS	0.3%	U3
2	EINLB1020000	编带色环电感 1MH/1W	1PCS	0.3%	L1
2	EINLC15A0750	电感 DR3*12 φ 0.75*8.5TS 1-2uH L=4.5±0.5mm	1PCS	0.3%	L2
2	EJU0604035C0	跳线 φ 0.6*4mm L=5±0.3mm	1PCS	0.3%	R7
2	ERE047ATDFX0	F 形绕线电阻 4R7±5% 1W L=5± 0.3mm 引线加绝缘漆	1PCS	0.3%	F1
2	ERE1504TBFC0	编带碳膜电阻 1M5±5% 1/4W	1PCS	0.3%	R1

Customer:

Switching Mode Power Supply

Model: SW06-05001000-EK

SPECIFICATION NO.:

PRODUCT SPECIFICATIONS

Part no.: SW06-05001000-EKD2

2	ETRH16050106	变压器 EE16 SW06-05001000-WV	1PCS	0.3%	T1
2	PCSS05010V24	PCB TAE-5W 5V1A SMT OK 板	1PCS	0%	
3	ECA102SK1S63	贴片电容 0805/102/50V ±10% X7R	2PCS	0.3%	C12, C13
3	ECA223SK1S63	贴片电容 0805/223/50V ±10% X7R	1PCS	0.3%	C7
3	ECA474SK1S63	贴片电容 0805/474/50V ±10% X7R	1PCS	0.3%	C11
3	ERE0000SBF14	SMD1206 电阻 0R±5% 印字 0	1PCS	0.3%	R10
3	ERE0100SAF13	SMD0805 电阻 10R±5% 印字 100	1PCS	0.3%	R18
3	ERE0100SBF14	SMD1206 电阻 10R±5% 印字 100	1PCS	0.3%	R7
3	ERE0270SAF13	SMD0805 电阻 27R±5% 印字 270	1PCS	0.3%	C8
3	ERE030ASBF14	SMD1206 电阻 3R±5% 印字 3R0	3PCS	0.3%	R5, R6, R8
3	ERE1001SAF13	SMD0805 电阻 1K±5% 印字 102	3PCS	0.3%	R14, R17, C10
3	ERE1001SBF14	SMD1206 电阻 1K±5% 印字 102	1PCS	0.3%	R11
3	ERE1003SBF14	SMD1206 电阻 100K±5% 印字 104	2PCS	0.3%	R3, R4
3	ERE2201SBF14	SMD1206 电阻 2K2±5% 印字 222	1PCS	0.3%	R2
3	ERE3001SAD13	SMD0805 电阻 3K±1% 印字 3001	1PCS	0.3%	R13
3	ERE3300SAF13	SMD0805 电阻 330R±5% 印字 331	1PCS	0.3%	R16
3	ERE3301SAD13	SMD0805 电阻 3K3±1% 印字 3301	1PCS	0.3%	R15
3	PCBSTAE05V13	PCB TAE-5W 94V0 53*30*1.2MM	1PCS	0.3%	
1	PLB06WYKCAB1	下盖 PC6W 立式 KC 黑色铜脚	1PCS	1%	组装
1	PLT06WYTTAB2	上盖 6W 立式黑色带孔 VDE 适配	1PCS	1%	组装

Customer:
 Model: SW06-05001000-EK
 SPECIFICATION NO.:
 Part no.: SW06-05001000-EKD2

Switching Mode Power Supply

PRODUCT SPECIFICATIONS

20111026 - 0024

[별지 제2호서식]

접수번호 :



전기용품 안전 인증서

Electrical Appliances Safety Certificate

안전인증번호: HU10553-11007B
 (Certificate No.)
 제조업자명: Shenzhen Top-Asia Electronics Co., Limited.
 (Manufacturer)
 대표자명: DAOL WONG
 (President)
 제조공장의소재지: 3F/B, XinRui Logistics Park HouRui Village, HuangTian, Bao'an,
 (Factory Address) Shenzhen city, Guangdong, China.
 제품명: 직류전원장치 (AC/DC Adapter)
 (Product)
 기본모델명: SW36-09004000-EK
 (Basic Model)
 정격: 100-240 V~, 50/60 Hz, 1.5 A (O/P: 9 Vdc / 4.0 A)
 (Rating)
 파생모델명 (Series Model):
 SW06-05000500-EK SW06-05000600-EK
 SW06-05000800-EK SW06-05001000-EK
 SW06-05001200-EK SW06-05000500-EK
 SW06-05501000-EK SW06-06000500-EK
 SW06-09001000-EK SW06-07200500-EK
 SW06-07500500-EK SW06-08000500-EK
 SW06-08400500-EK SW06-09000500-EK
 SW06-09000400-EK SW06-09000300-EK
 SW06-10000500-EK SW06-09500500-EK
 SW06-11000500-EK SW06-10500500-EK
 이면기재
 적용기준: K 60950-1(2006-12) K00024(2009-12)
 (Standard) K00022(2009-12) K00024(2009-12)

「전기용품안전 관리법 시행규칙」 제6조제2항에 따라 위의 전기용품에 대하여 안전인증서를 발급합니다.

We issue Electrical Appliances Safety Certification above product by Article 6 Section 2 of the Electrical Appliances Safety Control Law Enforcement Regulation.

2011년 11월 8일
 (Year) (Month) (Day)



한국기계전기전자시험연구원장
 Korea Testing Certification



※ 본 인증서는 「전기용품안전 관리법」 에 따른 전기제품 안전성확인에 한정된 것이며, 그 밖의 다른 법률이 적용되는 제품의 경우에는 해당 법률에 따라 추가적으로 인증·허가 등을 받아야 합니다.

- 첨부서류
1. 안전관리부품 및 재질목록 (List of Critical Components)
 2. 기본모델·파생모델의 내용 (General Descriptions of Certified Products)
 3. 전기용품안전인증의 변경현황 (Status of Certificate Revisions)

Customer:

Switching Mode Power Supply

Model: [SW06-05001000-EK](#)

SPECIFICATION NO.:

PRODUCT SPECIFICATIONS

Part no.: [SW06-05001000-EKD2](#)



SW08-05001500-EK	SW08-07201000-EK
SW08-07501000-EK	SW08-08001000-EK
SW09-05501500-EK	SW09-06001500-EK
SW09-08401000-EK	SW09-09001000-EK
SW10-05002000-EK	SW10-08401200-EK
SW10-09501000-EK	SW10-10001000-EK
SW11-05502000-EK	SW11-07201500-EK
SW11-10501000-EK	SW11-11001000-EK
SW12-06002000-EK	SW12-07501500-EK
SW12-08001500-EK	SW13-06002500-EK
SW13-08401500-EK	SW14-05502500-EK
SW14-09001500-EK	SW15-05003000-EK
SW15-06002500-EK	SW15-07202000-EK
SW15-07502000-EK	SW15-09501500-EK
SW15-10001500-EK	SW16-08002000-EK
SW16-10501500-EK	SW17-06503000-EK
SW17-08402000-EK	SW17-11001500-EK
SW18-05003500-EK	SW18-06003000-EK
SW18-07202500-EK	SW18-09002000-EK
SW19-07502500-EK	SW19-09502000-EK
SW20-05004000-EK	SW20-06003500-EK
SW20-08002500-EK	SW20-10002000-EK
SW21-06003500-EK	SW21-08402500-EK
SW21-10502000-EK	SW22-05504000-EK
SW22-07203000-EK	SW22-11002000-EK
SW23-05004500-EK	SW23-07503000-EK
SW23-09002500-EK	SW24-06004000-EK
SW24-08003000-EK	SW24-09502500-EK
SW25-05005000-EK	SW25-05504500-EK
SW25-10002500-EK	SW26-07203500-EK
SW26-08403000-EK	SW26-08503000-EK
SW27-06004500-EK	SW27-07503500-EK
SW27-09003000-EK	SW27-10502500-EK
SW28-05505000-EK	SW28-08003500-EK
SW29-07204000-EK	SW29-09503000-EK
SW30-07504000-EK	SW30-08403500-EK
SW30-10003000-EK	SW32-08004000-EK
SW32-09003500-EK	SW32-09503500-EK
SW32-10503000-EK	SW33-11003000-EK
SW34-08404000-EK	

Customer:
Model: SW06-05001000-EK
SPECIFICATION NO.:
Part no.: SW06-05001000-EKD2

Switching Mode Power Supply

PRODUCT SPECIFICATIONS



Date of Issue: 2011/06/23

Attestation Number: SECE1106003-1

Product: ADAPTER

Model No.: SWpp-xy-u (pp=06-36, for output power; x=0500-2400 for output voltage; y=0050-5000 for output current; u can be EU, BS, EK, JP, 3C for plug type, "EU" means European plug used, "BS" means British plug used, "EK" means Korean plug used, "JP" means Japanese plug used, "3C" means Chinese plug used)

Applicant: HONGKONG POWER-TEK INTERNATIONAL CO. LIMITED.

Address: ROOM 1708A1 NAN FUNG TOWER, 173 DES VOEUX ROAD C., HONG KONG

And, in accordance to the following Applicable Directives

Applicable to EUROPEAN COUNCIL DIRECTIVE 2004/108/EC
(The Information Technology Equipment)

That this product has been assessed against the following Applicable Standards

EN 55022:2006/ A1:2007 (Class B)
EN 61000-3-2 : 2006+A2: 2009
EN 61000-3-3 : 2008

EN 55024 : 1998/ A1:2001/ A2:2003
IEC 61000-4-2 : 2008
IEC 61000-4-3 : 2010
IEC 61000-4-4 : 2010
IEC 61000-4-5 : 2005
IEC 61000-4-6 : 2008
IEC 61000-4-8 : 2009
IEC 61000-4-11 : 2004

CERPASS hereby acknowledges that:

The measurements shown in this test report may issue a DECLARATION of CONFORMITY and apply the CE mark in accordance to European Union Rules.

Attestation by:

Clinton Kao / Supervisor

2011/06/23

Date

CERPASS TECHNOLOGY CORPORATION

No.66, Tangshuang Road, Suzhou Industrial Park, Suzhou, China

TEL: +86-512-6917-3688 FAX: +86-512-69173666