

INVERTER SPEC

PRODUCT : CCFL BACKLIGHT INVERTER

MODEL NAME : AT-0104

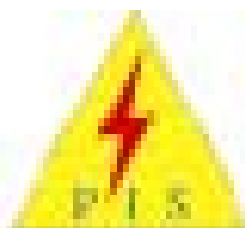
WRITTEN	CHECKED	APPROVAL

P.I.S Corporation

Head Office : Suite 402, Hwail Bldg, 802-5 Hoky-e-3Dong,
Dongan-Gu, Anyang-City, Kyonggi-Do, 431-083, Korea

TEL : +82-31-459-6660

FAX : +82-31-459-6671



PIS Corp.
Power Inverter Solution

1. APPLICATION

This Document Specified The Detailed Product Requirements of Inverter AT-0104

2. SUITABLE LOAD

LCD MODULE : 10.4" 1LAMP LCD PANEL ETC...

3. ELECTRICAL CHARACTERISTICS

1) Absolute Maximum Ratings

ITEM	SYMBOL	SPEC	UNIT	REMARKS
INPUT VOLTAGE1	Vin 1	4.8 ~ 5.2	V	
INPUT VOLTAGE2	Vin 2	4.8 ~ 5.2	V	
OPERATING TEMPERATURE	Top	0 ~ 50		
STORAGE TEMPERATURE	Tstg	-30 ~ 80		
RELATIVE HUMIDITY	RH	90	%	

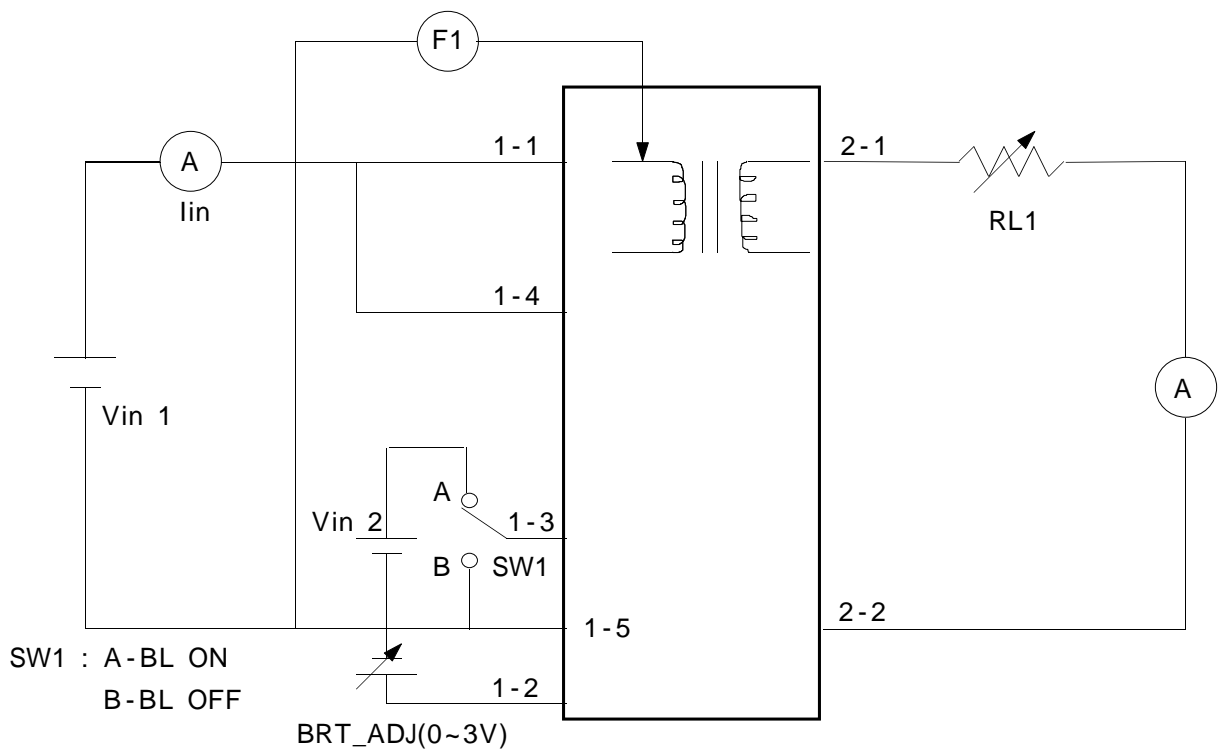
2) Control Signal

PIN NO	SYMBOL	STATUS	ACTION	REMARKS
CN1 #3	BKLT_ON	HIGH	LAMP(CCFL)-ON	2.0V~5.0V
		LOW	LAMP(CCFL)-OFF	0 ~ 0.3V

3) Output Characteristics

ITEM	SYMBOL	CONDITION			SPECIFICATION			UNIT
		Vin1(V) (DC-IN)	BRT- ADJ	RL(kΩ) (Ref)	MIN	TYP	MAX	
OUTPUT CURRENT	Io1 (max)	4.8~5.2	3V	80±0.5	4.5	5.0	5.5	mArms
	Io1 (min)	4.8~5.2	0V	80±0.5	1.5	2.0	2.5	
INPUT CURRENT	Iin	5	3V	80±0.5	0.60	0.70	0.80	ADC
FREQUENCY	F1	5	3V	80±0.5	40	50	60	KHz
DIMMING FREQUENCY	F_D	5	0V	80±0.5	100	150	200	Hz

4) Test Circuit



4. INTERFACE

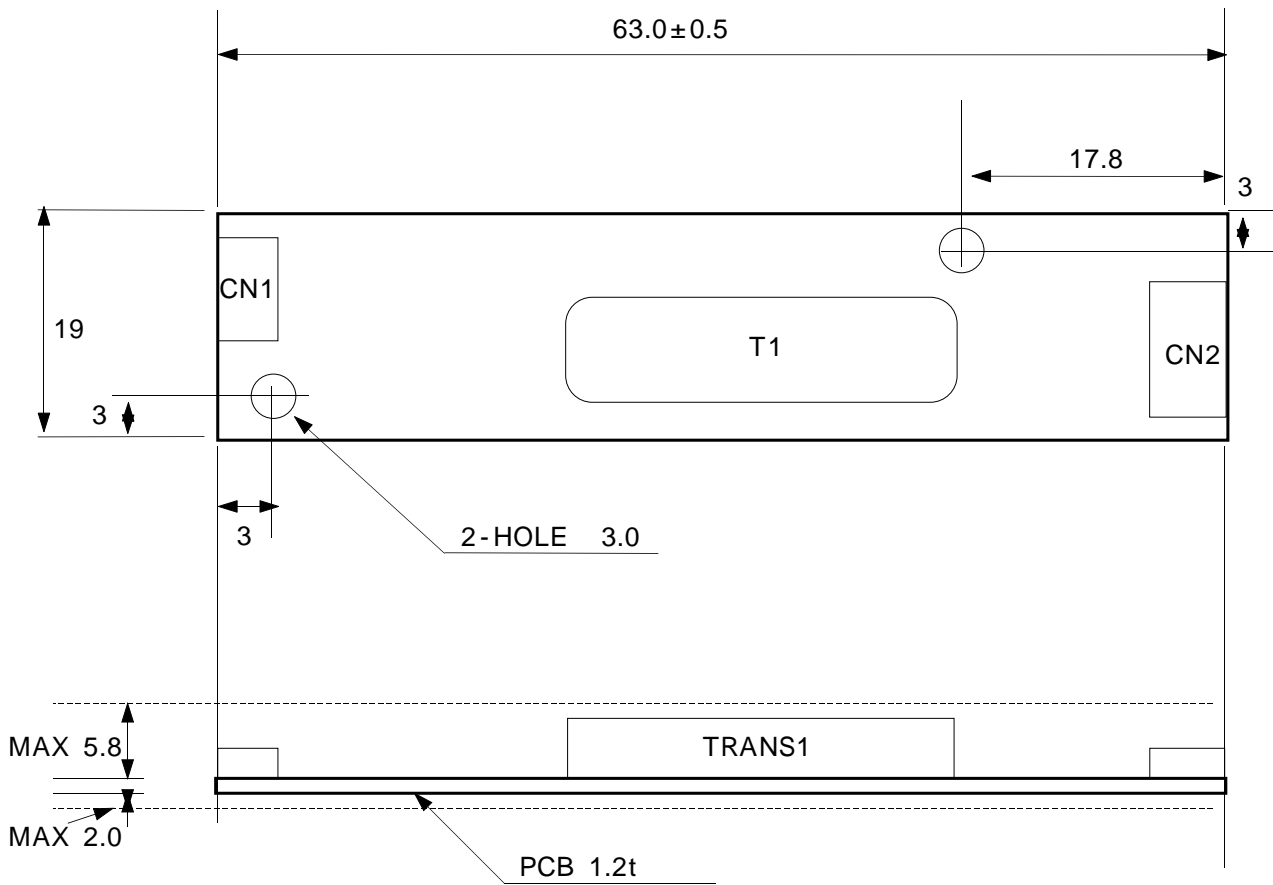
1) CN1 CONNECTOR : 12505WR-05(YEONHO)
or 53261-0590(MOLEX)

PIN NO	SYMBOL	REMARK
1	DC-IN(Vin)	DC INPUT POWER(5V)
2	BRT_ADJ	0 ~ 3V
3	BL ON/OFF	CCFL DRIVE SIGNAL
4	DC-IN	Vcc
5	GND	GND

2) CN2 CONNECTOR : 35001WR-02P(YEONHO)
or 68176-0217(MOLEX)
20015WR-05A00(YEONHO)
or 68174-0217(MOLEX)

PIN NO	SYMBOL	REMARK
1	HOT	HIGH
2	COLD	LOW

5. APPEARANCE (UNIT:mm)



TOLERANCE : $\pm 0.3m$