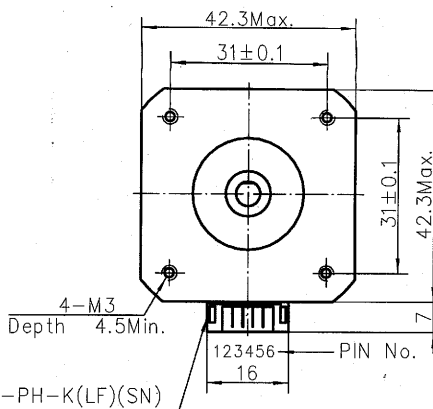
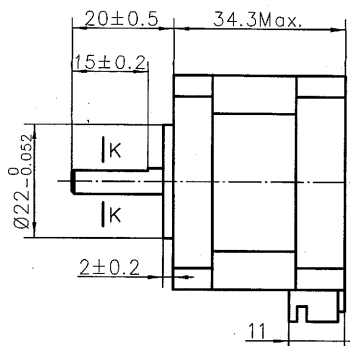
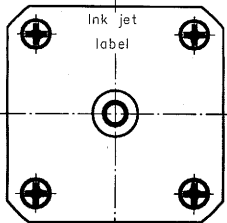
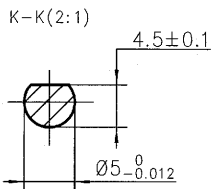


4611110008829



JST S6B-PH-K(LF)(SN)

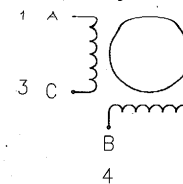


铭牌 Label Detail

MOONS' STEPPING MOTOR
TYPE 17HD4022-10N
XXXXXXXX YY/MM/DD

Work Order Date Format
加工单号 日期格式

接线图
Wiring Diagram



励磁顺序 vs. 旋转方向

Exciting Sequence vs. Direction of Rotation

STEP	A	B	C	D	CW
1	+	+	-	-	↑
2	-	+	+	-	
3	-	-	+	+	
4	+	-	-	+	

从安装面看为顺时针方向

Clockwise view from mounting side

规格 Specifications

1. 相数 Number of Phase	2
2. 步距角 Step Angle	1.8°
3. 额定电压 Rated Voltage	3 V DC
4. 额定电流 Rated Current	1 A
5. 保持力矩 Holding Torque	210mN.m MIN(Two phase on/rated current)
6. 相电阻 Phase Resistance	3 ohm±10%(20°C)
7. 相电感 Phase Inductance	4.2 mH±20%(1kHz 1V rms)
8. 转子惯量 Rotor Inertia	38g.cm ²
9. 电机重量 Motor Weight	0.24kg
10. 绝缘等级 Insulation Class	B(130°C)



Unit: mm

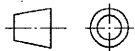
第一角画法
FIRST ANGLE METHOD

未注线性与角度尺寸公差
Tolerances for linear and angular dimensions without
individual tolerance indications

GB/T 1804-m eqv ISO 2768-1:m

未注形状与位置尺寸公差
Geometrical tolerance for features without
individual tolerance indications

GB/T 1184-K eqv ISO 2768-2:K



批准 Approve	Jian	4.21
标准化 Standard	Wang	4.21
工艺 Technology	Wang	4.21
审核 Check	Wang	4.21
设计 Design	吴勇	2011.04.20

MOONS'

Hybrid Stepping Motor

Shanghai Moons' Electric Co., Ltd.

This document is released for information only. Its reproduction in whole or in part or its dissemination to third parties is prohibited. All trademarks and registered trademarks appearing on this document are the property of their respective owners.

原始版本 Original revision 2011.04.20

REV. 版本记录 REVISION RECORD DATE UNLESS OTHERWISE SPECIFIED NAMES SIGNATURE DATE Type: 17HD4022-10N Rev.A SCALE 1:1 Sheet 1 of 1