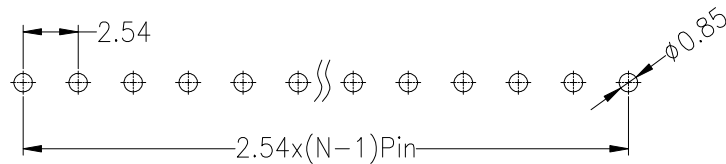
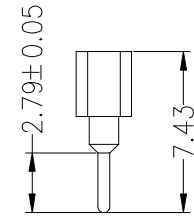
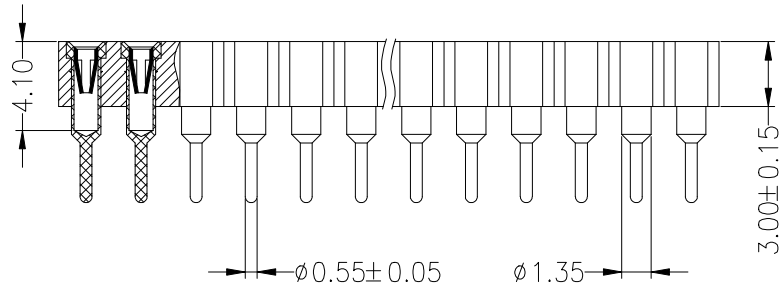
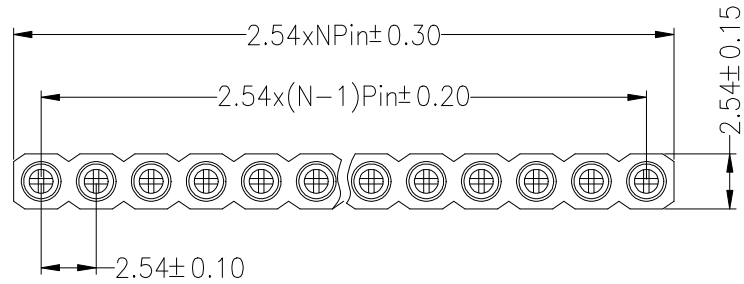




SPECIFICATIONS

Current Rating:3.0AMP
 Contact Resistance:10mΩ Max
 Dielectric Strength:Min 1000V RMS
 Mating Pin:φ0.4 to φ0.56mm
 Forces:(polished steel gauge φ0.43mm)
 Operation Temperature:-40°c to +105°c

Sleeve:Brass
 Contact Plating:Au Over Ni
 Contact Clip(4 finger):Phosphor Bronze/BeCu
 Insulator Material:Polyester(UL94V-0)
 Standard: PPS
 Soldering Temperature: 260°C±5° 5S



Recommended P.C.B Layout(Top Side)
 (PCB BOARD TOLERANCE±0.05)

Ordering Information

3620 30 1 XX S XX 074 0X

No.of Pins
1~40

Contact Plating
G0:Gold Flash
S0:Gold Flash/Tin

Length
074=7.43mm

				OPERATION		DRAW	yiyusheng	17.08.05	SCALE	FIT	JILN ® 深圳市锦凌电子有限公司 SHENZHEN JINLING ELECTRONICS CO.,LTD Tel: 86-755-2997-5806/5802 Fax: 86-755-2997-5588	
				X.X	±0.30				UNIT	mm		
				X.XX	±0.20	CHECK		SIZE	A4	PART NO. 3620301XXSXX0740X		
				X.XXX	±0.10		SHEET	1/1				
A0	2017.08.05	NEW DRAWING		Angle	±3°	APPROVE		PROJ.		TITLE:	2.54x3.0圆孔母座 180° L=7.43	
REV	DATE	MODIFICATION DESCRIPTION		DIM	TOL							
1	2	3	4	5	6	7	8	9				