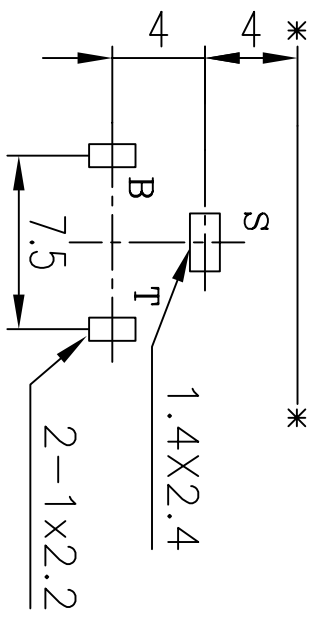
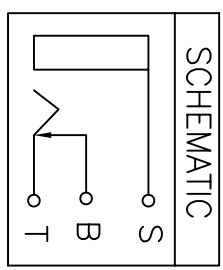
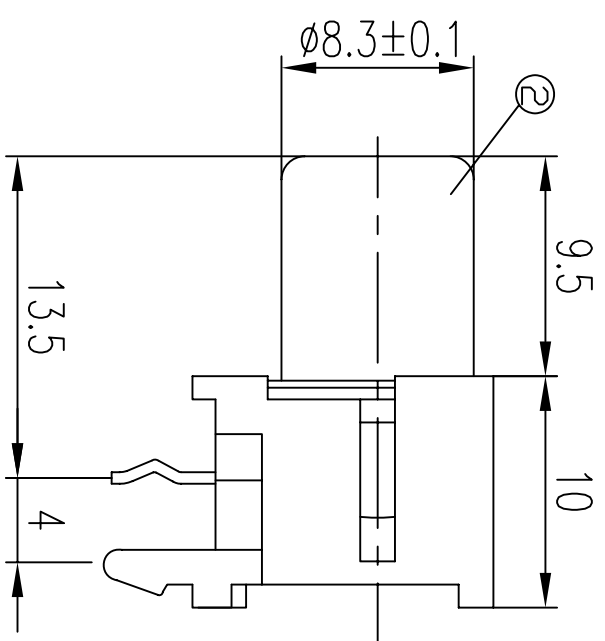
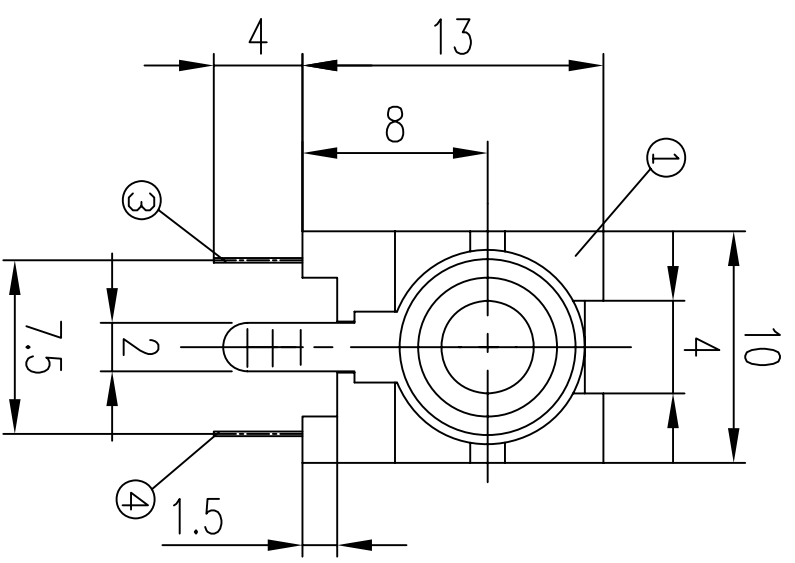


REVISIONS				
LTR	DESCRIPTION	DATE	REVISED	APPROVED



I:1.6 Dimensions of PC board holes
Tolerance : ±0.1 (Printed-side view)

4	SHUNT SPRING	1	H62y	t=0.3	MB:Cu Ag PLATED
3	TIP SPRING	1	QSn6.5-0.1y	t=0.3	MB:Cu Ag PLATED
2	OUTER CONTACT	1	H65y	t=0.4	MB:Cu Cu/Sn PLATED
1	HOUSING	1	PBT		UL-94HB
LTR	PART NAME	QTY	MATERIAL		REMARK

DSND	WALMS	DATE	2002.10.15	3RD ANGLE PROJECTION	NAME	PIN JACK
DWN	WALMS	DATE	2002.10.15		CAT. NO.	AV-5A
CHKD	SPRL	DATE	2002.10.15			
APVD	SPRL	DATE	2002.10.15	UNIT: mm		

UNLESS OTHERWISE SPECIFIED, TOLERANCE ON DECIMAL: ±0.3

Sanji Electronics Co., Ltd.

DWN.NO. A-AV-5A 001

TITLE RCA JACK	SPC. NO. SANJI	PAGE : 1 OF 6 DATE : 2005.7.22
--------------------------	--------------------------	---

SPECIFICATION

1. Standard atmospheric condition :

Unless otherwise specified, the standard range of atmospheric conditions for making measurements and tests are as follows :

Ambient temperature: 5°C to 35°C

Relative humidity : 45% to 85%

Air pressure : 85kPa to 106kPa

If there is any doubt about the results, measurements shall be made within the following limits :

Ambient temperature: 20±1°C

Relative humidity : 60% to 70%

Air pressure : 86kPa to 106kPa

Operating temperature range: -25°C to 70°C

Humidity range : 85% RH MAX.

2. Operating temperature range

Operating temperature range is the range of ambient temperature for the phono jack that can be operated continuously at rated voltage and rated current.

-25°C to 70°C

ISSUE	DATE	WRTN	CHKD	APVD	DESCRIPTIONS
	2005.7.22	HUANG	WANG	WANG	

TITLE RCA JACK	SPC. NO. SANJI	PAGE : 2 OF 6 DATE : 2005.7.22
--------------------------	--------------------------	---

3. Electrical characteristics

	Item	Condition	Specifications
1	Rated voltage/ Rated current		DC 34V 2A
2	Insulation resistance	A voltage of 500V D.C. shall be applied for 1 min. between mutually insulated metal parts after which measurement shall be made.	100 M Ω MIN.
3	Contact resistance	Measurement shall be made at with small current 1000 Hz (100mA MAX.)	30 m Ω MAX.
4	Dielectric strength	500V A.C. r.m.s (50 Hz to 60 Hz) for 1 min. Trip current : 2mA	Without damage to parts, arcing or breakdown, etc.

4. Mechanical characteristics

	Item	Condition	Specifications
1	Operating force	The insertion force and the withdrawal force shall be measured with the gauge plug as shown in Appendix attached.	Insertion force : 29.4N (3kgf) MAX
			Withdrawal force : 0.98N to 29.4N. (0.1kgf to 3.0kgf)
2	Terminal strength	Every terminal shall be capable of withstand a force of 4.9N (0.5kgf) for 10 seconds.	Without cracks or excessive looseness to the terminal, but deformation of terminal is authorized. Electrical and mechanical characteristics shall be satisfied.
3	Loosen strength of contact	The terminal shall be capable of withstand a force of 29.4N (3kgf) applied in any direction for 10 seconds.	
4	Strength of tapping part	The tapping part shall be capable of a torque of 98N-cm (10Kgf-cm) for 5 seconds by M3X8 tapping tight screw and panel (t=1) .	

TITLE RCA JACK	SPC. NO. SANJI	PAGE : 3 OF 6 DATE : 2005.7.22
--------------------------	--------------------------	---

5. Endurance characteristics

Item	Condition	Specifications
1 Operating endurance	The life test shall consist of 150 cycles of insertion and withdrawal with gauge plug covered with a thin coat of grease in order to prevent from heating or wearing, at a rate of 20 to 30 cycles per minutes under no load.	Electrical and mechanical Characteristics shall be satisfied.
2 Humidity test	Temperature : $40^{\circ}\text{C} \pm 2^{\circ}\text{C}$ Relative humidity : 90% ~95% for 96 hours. The testing jack shall be left alone for 30 minutes in a room ambient, before measurement shall be made.	Electrical and mechanical Characteristics shall be satisfied. Insulation resistance : 50 MΩ MIN.
3 Dry heat	The pin jack shall be subjected to temperature of $70^{\circ}\text{C} \pm 2^{\circ}\text{C}$ for a period of 96 hours, then shall be allowed to remain in room ambient conditions for 30 minutes.	Electrical and mechanical Characteristics shall be satisfied.
4 Cold	The pin jack shall be subjected to temperature of $-25^{\circ}\text{C} \pm 3^{\circ}\text{C}$ for a period of 96 hours, then shall be allowed to remain in room ambient conditions for 30 minutes.	
5 Composite temperature/humidity cyclic test	The pin jack shall be subjected to the conditions as shown in below, and then shall be returned and allowed to remain in room ambient condition for 30 minutes.	Electrical and mechanical Characteristics shall be Satisfied.

Temperature(°c)

Time in hours (h)

(4 cycles)

TITLE RCA JACK	SPC. NO. SANJI	PAGE : 4 OF 6 DATE : 2005.7.22
--------------------------	--------------------------	---

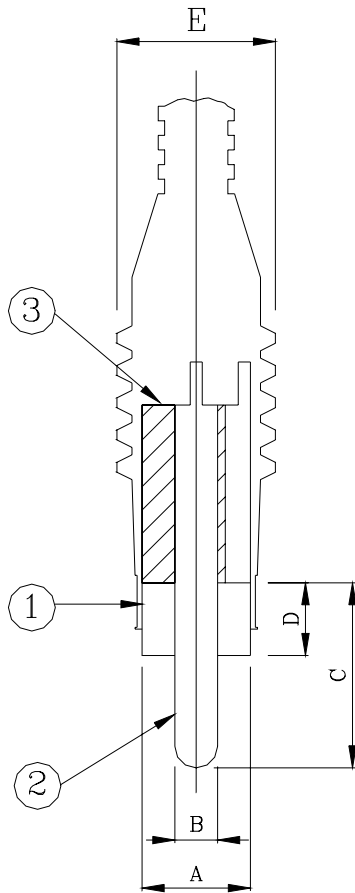
	Item	Condition	Specifications
6	Resistance to soldering heat test	<p>The terminal for a printed circuit board : Temperature of solder : $260 \pm 3^{\circ}\text{C}$ Dip time : $5+1/-0$ seconds</p> <p>The terminal for a lead wire : Temperature of solder : $380 \pm 10^{\circ}\text{C}$ Dip time : $3+1/-0$ seconds</p> <p>Solder : Sn/3.0Ag/0.5Cu Flux : 25%Resin/75%IPA</p>	Electrical and mechanical Characteristics shall be Satisfied, and not show remarkable failure.
7	Soldering test	<p>Temperature of solder : $245^{\circ}\text{C} \pm 3^{\circ}\text{C}$ Time of dip : 2~3 seconds Length of dip : 2 mm (from top of terminal) Solder : Sn/3.0Ag/0.5Cu Flux : 25%Resin/75%IPA</p>	The soldered area shall be covered a minimum of 95% of the surface being immersed.
8	Salt Spray test	<p>Testing bath : Refer to JIS C5402 The temperature shall be $35^{\circ}\text{C} \pm 2^{\circ}\text{C}$ in the ambient of the test specimen during the test . Spray apparatus : The apparatus shall be capable of producing fine dense mist uniformly. Salt water : The concentration of the salt water shall be adjusted at $5 \pm 1\%$ weigh ratio at $35^{\circ}\text{C} \pm 2^{\circ}\text{C}$ Test time : 16 hours After test specimens shall be left alone for 1~2 hours in a room ambient.</p>	<p>Electrical and mechanical Characteristics shall be satisfied.</p> <p>Contact resistance: $100 \text{ m}\Omega$ MAX</p>

6. Amendment :

When the amendment of this specification comes into necessity, it shall be made by the mutual consultation and agreement between manufacturer and customer.

TITLE RCA JACK	SPC. NO. SANJI	PAGE : 5 OF 6 DATE : 2005.7.22
--------------------------	--------------------------	---

Mating Photo Plug



- ① Plug cover
- ② Plug pin
- ③ Insulator

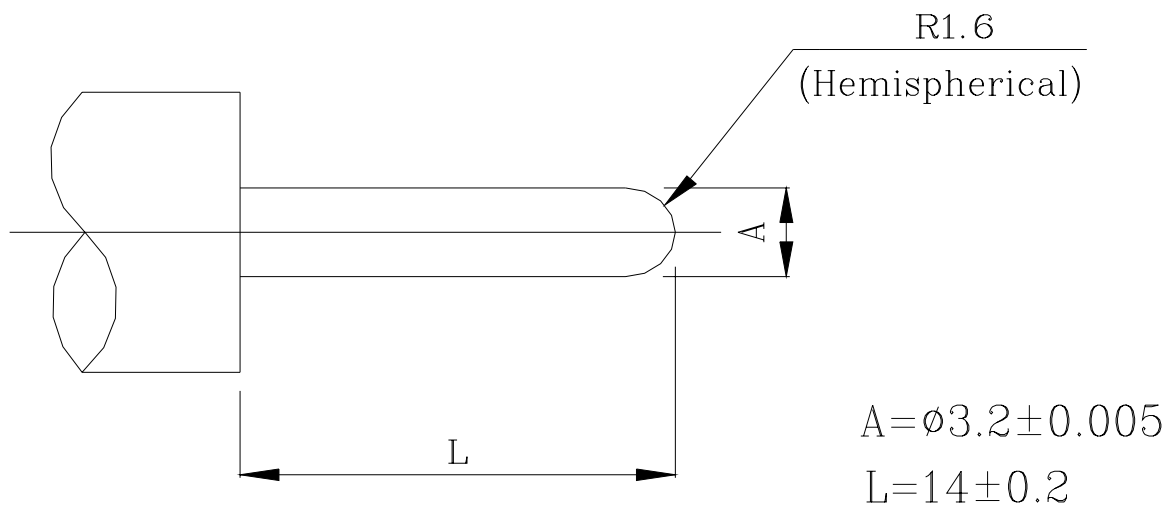
Symbol	Dimension
A	($\phi 8.2$)
B	$3.25^{+0}_{-0.15}$
C	14.0 ± 0.5
D	5.5 ± 0.5
E	12 Max

Unit: mm

(): Reference value

Note: Eccentricity to central axis shall be 0.15 mm or less.

TITLE	SPC. NO.	PAGE : 6 OF 6
RCA JACK	SANJI	DATE : 2005.7.22



Surface roughness : Peak-to-valley height of 0.8 micron MAX.

For insertion and drawing force :

Material : Stainless steel.

Finish : Chromium plated.

For contact resistance :

Material : Brass

Finish : Silver plated.

Fig. 1 gauge plug