

DATASHEET & RELIABILITY DATA

SD20 SERIES

(주)오디피

Open Digital Power Corp.

Contents

- Introduction	-----	3~4 page
- Datasheet	-----	5~9 page
1. Internal Circuit Architecture		
2. Maximum Ratings		
3. Electrical Characteristics		
4. Isolation Characteristics		
5. General Characteristics		
6. Environment		
7. Characteristics Curves		
- Reliability Data	-----	10~14 page
1. MTBF		
2. Environmental Stress Test		
3. Main Components Δt Test		
4. Derating of semiconductor (FET, Rectifier diode)		
5. Abnormal Test		
- Application Sheet	-----	15~22 page
1. Basic Connection		
2. Input Section		
3. Output Section		
4. Operating Method		
5. Environment		
6. Isolation		
7. Outline Dimensions		

MAX. Power 20.0W Isolated DC-DC Converter

SD20 Series Small Compact Size DC-DC Converter



Features

- Small Compact Size
- High Efficiency
- Isolated Input - Output
- Wide operating temperature range (-40°C to 85°C)
- Long Life Design (Employ only Ceramic Capacitor)
- Built-in over current protection circuit
- Wide 2 : 1 input range
- Adjustable output voltage (single output)
- Safety standard : CB, CE approved
- RoHS compatible design

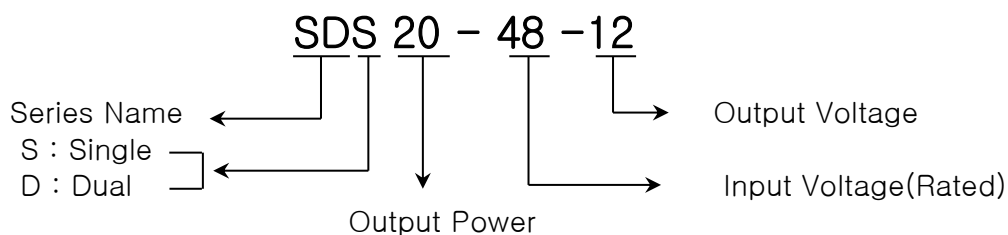
Applications

- Data and telecommunication
- FA control
- Datacommunication electronic equipments

Environment

- Operating Temperature : -40°C ~ 85°C
- Operating Humidity : 5% ~ 95% RH (Non condensing)
- Storage Temperature : -40°C ~ 105°C
- Cooling : Free-Air Convection
- MTBF : 4.5 x 10⁵ hrs

Model Name Structure



Pin assignments & Function



<Top View>

- Single Output Name & Function

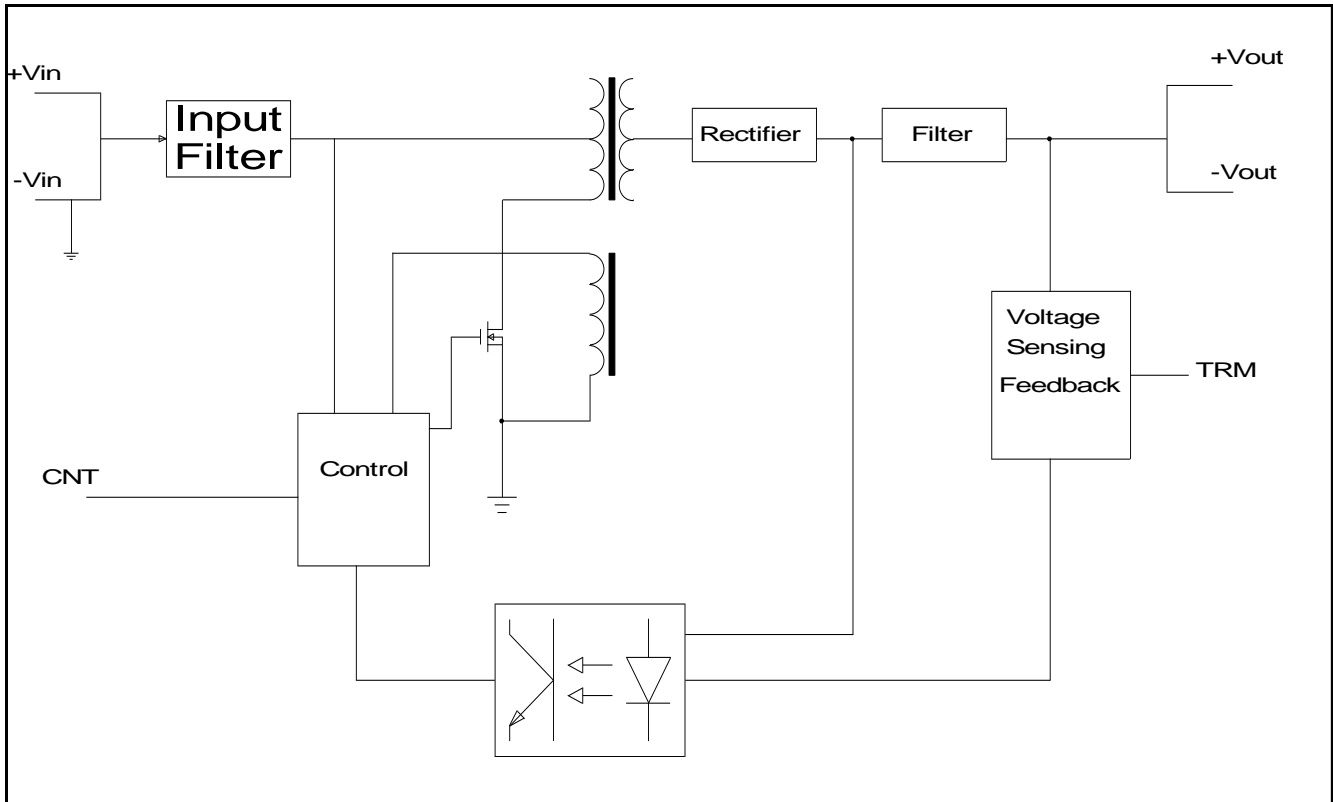
PIN No.	NAME	FUNCTION
1	+Vin	Positive terminal for Vin
2	-Vin	Negative terminal for Vin
3	CNT	Remote on/off Control
4	TRM	Vout variation($\pm 10\%$) by external parts
5	-Vout	Negative terminal for Vout
6	-Vout	Negative terminal for Vout
7	+Vout	Positive terminal for Vout
8	+Vout	Positive terminal for Vout

- Dual Output Name & Function

PIN No.	NAME	FUNCTION
1	+Vin	Positive terminal for Vin
2	-Vin	Negative terminal for Vin
3	CNT	Remote on/off Control
4	-Vout	Negative terminal for Vout
5	No Pin	
6	Com	The common ground of Vout
7	No Pin	
8	+Vout	Positive terminal for Vout

- Datasheet

1. Internal Circuit Architecture



2. Maximum Ratings

Characteristics		Symbol	Min.	Typ.	Max.	Unit
Input Voltage Continuis	SDS20 - 24 - XX	Vin	18	-	36	VDC
	SDS20 - 48 - XX		36	-	76	
	SDD20 - 24 - XXXX		18	-	36	
	SDD20 - 48 - XXXX		36	-	76	
Operating Ambient Temperature		Ta	-40	-	85	°C
Storage Temperature		Tstg	-40	-	105	°C
Withstand Voltage			-	-	500	Vac

3. Electrical Characteristics

– Input Section

Ta : 25°C, Vin : Typical Input Voltage

Characteristics		Symbol	Min.	Typ.	Max.	Unit
Operating Voltage Range	SDS20 - 24 - XX	Vin	18	24	36	VDC
	SDS20 - 48 - XX		36	48	76	
	SDD20 - 24 - XXXX		18	24	36	
	SDD20 - 48 - XXXX		36	48	76	
Maximum Input Current (Vin : min., Io : 100%)	SDS20 - 24 - XX	Iin			1.30	A
	SDS20 - 48 - XX				0.70	
	SDD20 - 24 - XXXX				1.30	
	SDD20 - 48 - XXXX				0.70	
Maximum No Load Input Current (Vin : rated)	SDS20 - 24 - 3R3, 05			70		mA
	SDS20 - 24 - 12, 15			30		
	SDS20 - 48 - 3R3, 05			40		
	SDS20 - 48 - 12, 15			30		
	SDD20 - 24 - XXXX			30		
	SDD20 - 48 - XXXX			20		

– Output Section

Ta : 25°C, Vin : Minimum, Typical, Maximum Input Voltage

Characteristics		Symbol	Min.	Typ.	Max.	Unit
Output Voltage Accuracy		Vo	-	-	±2	%
Regulation	Line Regulation (From min. Vin to max. Vin, constant load)		-	-	±0.5	%
	Load Regulation (From no load to maximum load)		-	-	±1	%
	Cross Regulation(Dual) (minimum load : 10% Load)				±3	%
Output Ripple and Noise (Vin : Rated, Io : Max., BW : 20MHz, use the external capacitor(47uF, 105) between +Vo and -Vo)		mVp-p	-	1% of Vout	-	mV (peak to peak)

Characteristics		Symbol	Min.	Typ.	Max.	Unit
Output Current	SDS20 - XX - 3R3	I _o	-	-	4.0	A
	SDS20 - XX - 05		-	-	4.0	
	SDS20 - XX - 12		-	-	1.7	
	SDS20 - XX - 15		-	-	1.4	
	SDD20 - XX - 1212		0.085	-	0.85	
	SDD20 - XX - 1515		0.07	-	0.70	
Output Current Limit (OCP : Over Current Protection, recovers automatically)			105	-	-	%
Dynamic Load Response (V _{in} : Rated, I _o : from 50% to 100%, from 100% to 50%, BW : 20MHz, Freq. : 100Hz, Duty : 0.5, Tr/Tf : 100us use the external capacitor(1uF) between +V _o and -V _o)			-	-	3% of V _{out}	mV (peak to peak)
Start - Up Time		T _{start}	-	-	10	ms
Turn - on Overshoot			-	-	5	%
Efficiency (V _{in} : Rated, I _o : Max.)	SDS20 - 24 - 3R3		-	86	-	%
	SDS20 - 24 - 05		-	88	-	
	SDS20 - 24 - 12		-	89	-	
	SDS20 - 24 - 15		-	90	-	
	SDS20 - 48 - 3R3		-	86	-	%
	SDS20 - 48 - 05		-	87	-	
	SDS20 - 48 - 12		-	89	-	
	SDS20 - 48 - 15		-	90	-	
	SDD20 - 24 - 1212		-	89	-	%
	SDD20 - 24 - 1515		-	89	-	
	SDD20 - 48 - 1212		-	89	-	%
	SDD20 - 48 - 1515		-	89	-	

4. Isolation Characteristics

Characteristics		Symbol	Min.	Typ.	Max.	Unit
Withstand Voltage (AC500V, 1minute)	Input – Output		–	–	500	Vac
	Input – Case		–	–	500	Vac
	Output – Case		–	–	500	Vac
Isolation Resistance (DC500V at 25°C and 70%RH)	Output – Case	Riso	100	–	–	MΩ

5. General Characteristics

Characteristics		Symbol	Min.	Typ.	Max.	Unit
Remote on / off control (CNT Pin, Negative Logic Module on : Logic Low or Short to –Vin Module off : Logic High or open)		CNT				
External Trim Adj. Range (TRM Pin, Vout variation by external parts)		TRM	–10	–	+10	%
Switching Frequency						kHz
MTBF (MIL-HDBK-217F)			4.5 x 10 ⁵			hrs
Dimension (W x H x L)			45.7 x 13.0 x 30.5			mm
Weight			–	18.0	–	grams

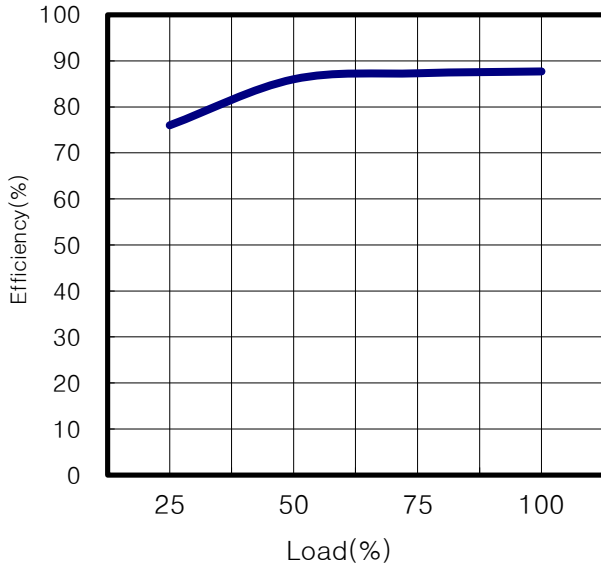
6. Environment

Characteristics		Symbol	Min.	Typ.	Max.	Unit
Operating Temperature Range		Ta	–40	–	85	°C
Operating Humidity (non Condensing)			5	–	95	%RH
Storage Temperature		Tstg	–40	–	105	°C

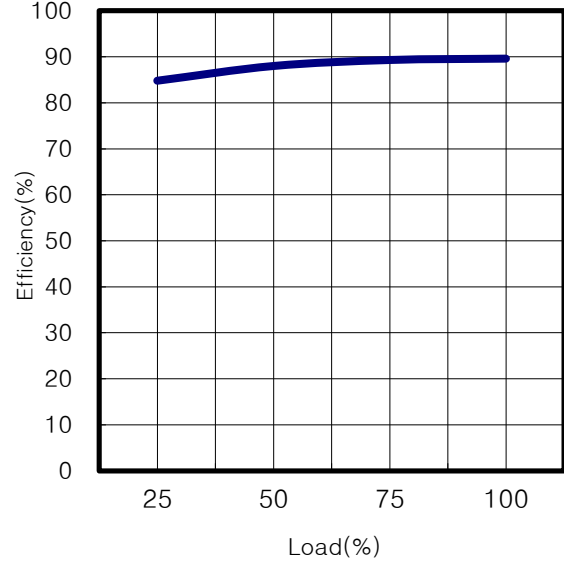
7. Characteristics Curves

Efficiency Curves

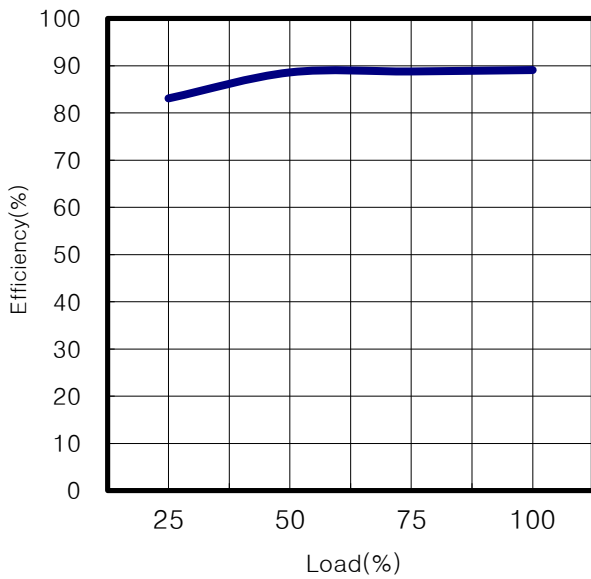
< SDS20 - 24 - 05 >



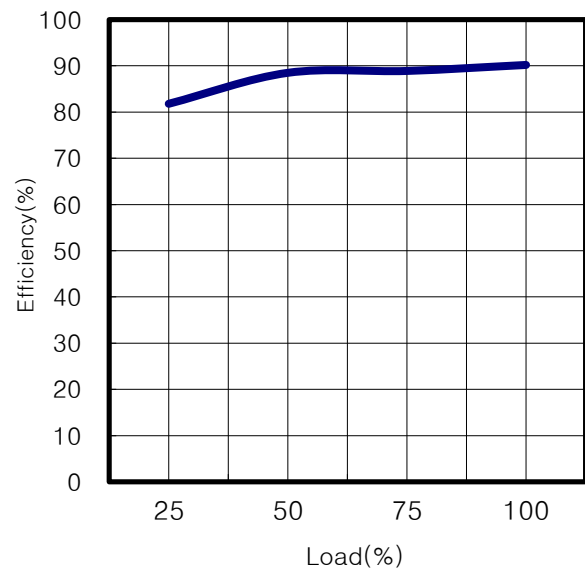
< SDS20 - 48 - 12 >



< SDD20 - 24 - 1212 >



< SDD20 - 48 - 1515 >



– Reliability Data

1. MTBF

Calculating Reliable Values of MTBF

Calculated based on part count reliability projection of MIL-HDBK-217F individual failure rates λg is given to each part and MTBF is calculated by the count of each part.

Method is :

$$MTBF = \frac{10^6}{\sum_{i=1}^n Ni(\lambda g \cdot \pi Q)^i} = \frac{10^6}{\lambda_{equip}} \quad [\text{hours}]$$

For a given equipment environment where :

λ_{equip} = Total equipment failure rate (Failures / 10^6 Hours)

λg = Generic failure rate for the i th generic part (Failures / 10^6 Hours)

πQ = Quality factor for the i th generic part ($\pi Q = 1$)

Ni = Qty of i th generic part

n = Number of different generic part categories in the equipment

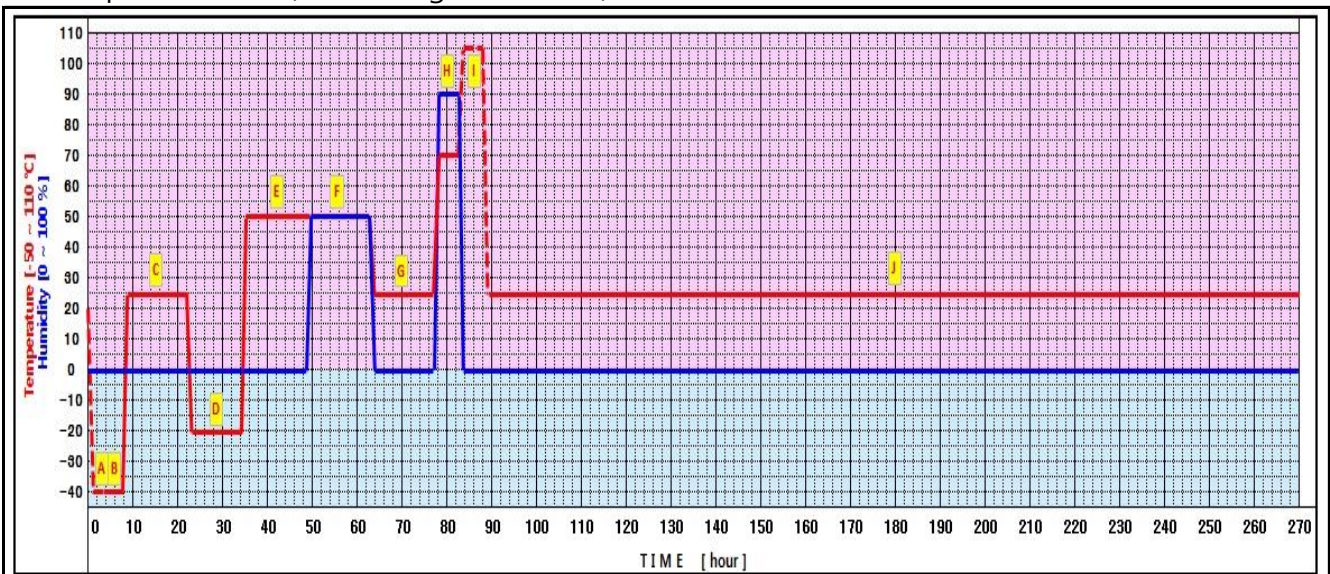
	PART	Number	Failure Rate	Failure Rate
1	Logic IC	1	0.015	0.0150000
2	FET	3	0.012	0.0360000
3	Voltage Regulaor	1	0.002	0.0020000
4	Diode (Zener)	1	0.002	0.0020000
5	Diode (FRD)	2	0.069	0.1380000
6	Diode (SBD)	2	0.027	0.0540000
7	Bridge Diode	0	0.066	–
8	LED	0	0.00023	–
9	Varistor	0	0.0013	–
10	Photo-coupler	1	0.07	0.0700000
11	Thyristor	0	0.0022	–
12	Elec.- Cap.	0	0.019	–
13	Ceramic Cap.	0	0.026	–
14	MLCC	18	0.053	0.9540000
15	Choke coil	2	0.00022	0.0004400
16	Switching transformer	2	0.0042	0.0084000
17	Line Filter	0	0.0044	–
18	Resistor	21	0.0024	0.0504000
19	Resistor Variable	0	0.0024	–
20	Thermister	0	0.0019	–
21	Connertor	0	0.052	–
22	Soldering Point	61	0.0078	0.4758000
23	PCB	1	0.37	0.3700000
24	Fuse	0	0.01	–
Total Equipment Failure Rate (λ_{equip})				2.1760400
MTBF = $10^6 / \lambda_{equip}$ (F/T)				459,550.376
MTBF \approx 450,000[Hours]				

2. Environmental Stress Test(EST)

The purpose of the environment stress test is to ensure reliability by setting in advance the following environment and verified.

- transport process and conservation status
- environmental change conditions that can be applied to the product from the process of the end-user

Test cycle consists of 10 segments(total 270 hours). Test results of all segments must meet the specifications. (refer to Fig.1 & Table1)



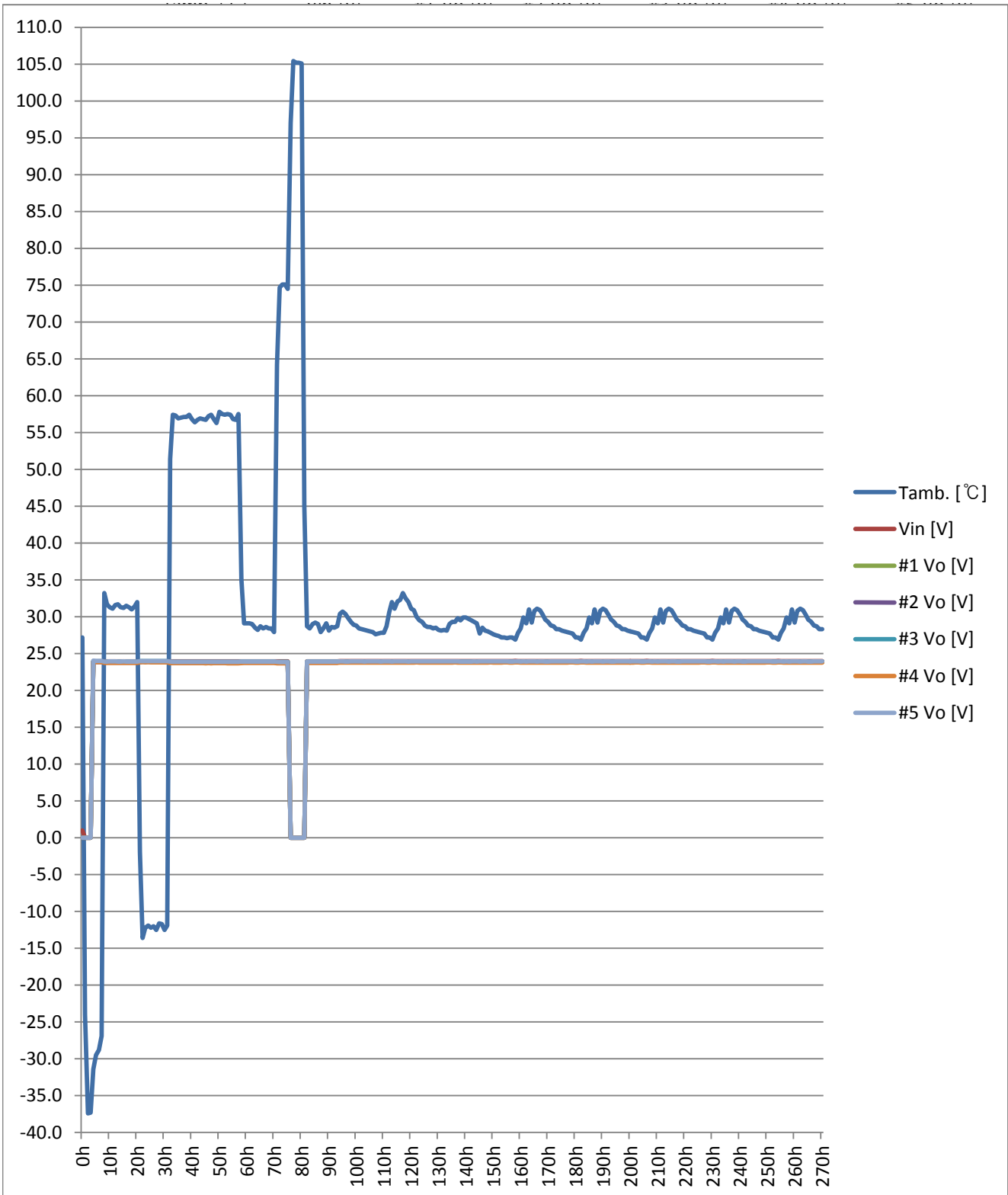
< Fig.1 : Test Cycle >

Segment	Time	Temp.	Humidity	Description	Input 'SW'
A	2 hours	-40°C	0%	Low temperature storage	off
B	4 hours	-40°C	0%	Low temperature operation	on
C	12 hours	25°C	0%	Room temperature operation	on
D	10 hours	-20°C	0%	Low temperature operation	on
E	12 hours	50°C	0%	High temperature operation	on
F	12 hours	50°C	50%	High-temperature & humidity operation	on
G	12 hours	25°C	0%	Room temperature operation	on
H	4 hours	70°C	90%	High-temperature & humidity operation	on
I	4 hours	105°C	0%	High temperature storage	off
J	189 hours	25°C	0%	Room temperature operation	on

< Table1 : Segment Description >

2.1. Environmental Stress Test Results

- a. Test Sample : SDD20-24-1212 (from '-Vo' to '+Vo = 24VDC)
- b. 270 hours in one cycle test graph



c. Characteristics test results (@ Input Voltage : 24VDC, Output Load : 0.77A(90.6% of Full load))

Segment	Test Time	T _{amb.} /Humi.	Output Voltage	Start up	Ripple / Noise [mVp-p]	Sapmle No.
A	3h	-40°C / 0%	12.08V	OK	20 / 54	# 1
			12.13V	OK	19 / 52	# 2
			12.11V	OK	20 / 52	# 3
			12.07V	OK	22 / 50	# 4
			12.08V	OK	20 / 55	# 5
B	7h	-40°C / 0%	12.07V	OK	20 / 53	# 1
			12.13V	OK	19 / 51	# 2
			12.11V	OK	20 / 52	# 3
			12.07V	OK	21 / 45	# 4
			12.08V	OK	17 / 53	# 5
C	10h	25°C / 0%	12.03V	OK	17 / 46	# 1
			12.11V	OK	16 / 44	# 2
			12.07V	OK	17 / 44	# 3
			12.03V	OK	19 / 40	# 4
			12.05V	OK	15 / 46	# 5
D	24h	-20°C / 0%	12.07V	OK	19 / 53	# 1
			12.13V	OK	18 / 51	# 2
			12.10V	OK	19 / 51	# 3
			12.07V	OK	21 / 46	# 4
			12.08V	OK	17 / 53	# 5
E	33h	50°C / 0%	12.01V	OK	17 / 44	# 1
			12.09V	OK	16 / 42	# 2
			12.04V	OK	17 / 42	# 3
			12.01V	OK	19 / 42	# 4
			12.02V	OK	15 / 44	# 5
F	48h	50°C / 50%	12.01V	OK	17 / 45	# 1
			12.08V	OK	16 / 43	# 2
			12.04V	OK	17 / 43	# 3
			12.01V	OK	19 / 39	# 4
			12.02V	OK	15 / 45	# 5
G	57h	25°C / 0%	12.04V	OK	17 / 48	# 1
			12.10V	OK	16 / 46	# 2
			12.07V	OK	17 / 46	# 3
			12.05V	OK	19 / 48	# 4
			12.05V	OK	15 / 42	# 5
H	72h	70°C / 90%	11.99V	OK	15 / 43	# 1
			12.06V	OK	14 / 41	# 2
			12.02V	OK	15 / 45	# 3
			11.99V	OK	17 / 39	# 4
			12.00V	OK	14 / 45	# 5
I	81h	25°C / 0%	12.04V	OK	17 / 51	# 1
			12.11V	OK	16 / 48	# 2
			12.07V	OK	17 / 48	# 3
			12.05V	OK	19 / 44	# 4
			12.06V	OK	15 / 51	# 5
J	270h	25°C / 0%	11.99V	OK	17 / 48	# 1
			12.07V	OK	16 / 46	# 2
			12.02V	OK	17 / 46	# 3
			12.00V	OK	19 / 42	# 4
			12.01V	OK	16 / 48	# 5
Test Result			Pass	Pass	Pass	

3. Main Components Δt Test

The purpose of the test is to ensure the reliability and margin by measuring the heating value of the main components.

3.1. SDS20-24-12 (@ 100% Load)

Test Point	Test Condition	Vin : 18VDC		Vin : 24VDC	
		T _{amb.}	31.0°C	T _{amb.}	31.8°C
		T _c	Δt	T _c	Δt
FET		89.7°C	58.7°C	86.9°C	55.1°C
Trans Coil		81.6°C	50.6°C	80.0°C	48.2°C
Trans Core		79.3°C	48.3°C	78.1°C	46.3°C
Output Diode		81.0°C	50.0°C	79.9°C	48.1°C

4. Derating of Semiconductor

Compare T_{jmax}(maximum junction temperature) and T_j and is expressed as a percentage. T_j is the value calculated by the temperature of the case and the power dissipation and the thermal impedance.

- Measuring Components : FET, Rectifier diode
- Calculating method of derating ratio

$$\text{Derating Ratio} = \frac{T_j}{T_{j(max)}} \times 100 \text{ [%]}$$

$$T_j = T_c + (R_{\theta(j-c)} \times P_d)$$

T_c : Case Temperature

R_{θ(j-c)} : Thermal impedance between junction and case

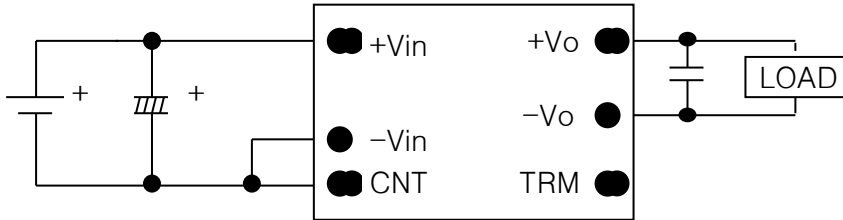
P_d : Power dissipation

4.1. SDS20-24-12

Components	Condition	Vin : 18VDC	Load : 100%	T _{amb.} : 50°C
Q1 (FET)		T _{j(max)} : 150 °C	P _d : 0.59 W	Derating Ratio = 81.1%
		R _{θ(j-c)} : 22 °C/W	T _j = 121.7 °C	
		T _c : 108.7°C		
D4 (Rectifier Diode)		T _{j(max)} : 150 °C	P _d : 1.04 W	Derating Ratio = 85.7%
		R _{θ(j-c)} : 13 °C/W	T _j = 113.5 °C	
		T _c : 100°C		

- Application Sheet

1. Basic Connection



2. Input Section

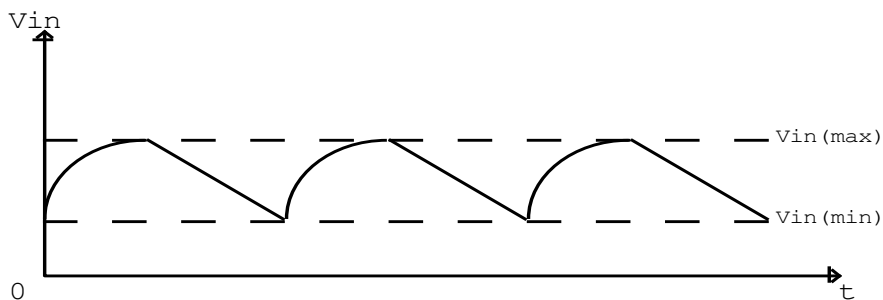
- Input fuse

SD20 Series do not have internal fuse. To ensure safe operation, an external fuse(Regular or Slow Blow Type) is recommended.

	SD20 Series
24V input	4A
48V input	2A

- Unstable Input

Input voltage is comprised of both the DC voltage(average rectified voltage)and the peak to peak ripple voltage. Peak to peak ripple voltage should be minimized so that the input voltage is within the standard input voltage range as follows.



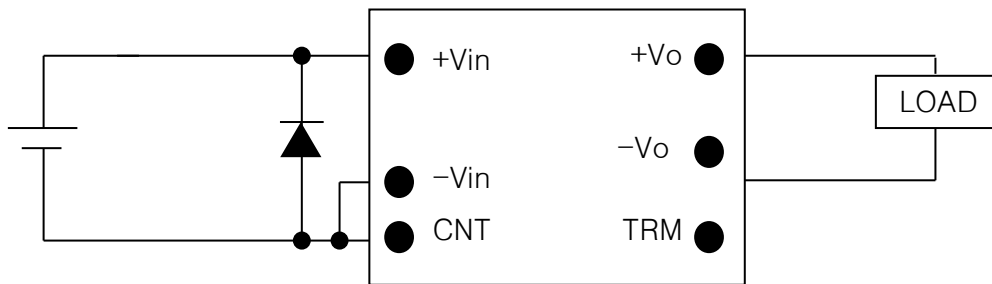
< Unstable Input >

- Battery Input

When using a battery as the input power supply, make sure that the maximum and minimum input voltage do not away out of the standard input voltage range.

- Input Reverse-polarity voltage protection

Accidentally reversing the input connections could damage the module. Thus. If the connections may be accidentally reversed. Use a protective diode and an input fuse as shown below.



- Remote On/Off Control(CNT)

Without switching the input on/off, the output can be enabled and disabled using this function. This function is useful for sequence control when building multiple output power supplies. This control circuit is on the input side using the CNT pin. Ground of CNT pin is the input -V terminal. When not using this function, short CNT to input -V terminal.

CNT level for -Vin		OUTPUT
Low level	Short to -Vin	ON
High level	Open	OFF

< Negative Logic on/off Control >

3. Output Section

- Output Ripple and Noise Measurement Method

The measurement for output ripple and noise are based on normal probe with 20MHz bandwidth scope. Upon measurement of the ripple voltage, make sure that the scope probe leads are not too long. If a precise measurement can be made, the noise occurs from circumference must be reduced.

- Line Regulation

The line regulation means to the change in output voltage when the input voltage is varied within the input voltage range, at constant load and constant ambient temperature. The measurement point for the input and output voltage are $\pm V_{in}$ pins, $\pm V_{out}$ pins respectively.

- Load Regulation

The load regulation means to the change in output voltage when the load is changed from minimum load to maximum load, at constant input voltage and constant ambient temperature. The measurement point for the input and output voltage are $\pm V_{in}$ pins, $\pm V_{out}$ pins respectively.

- Output Voltage adjustment (TRM)

The output voltage can be varied within $\pm 10\%$ of the standard output voltage when use the external parts-resistors and variable resistor.

External Resistors :

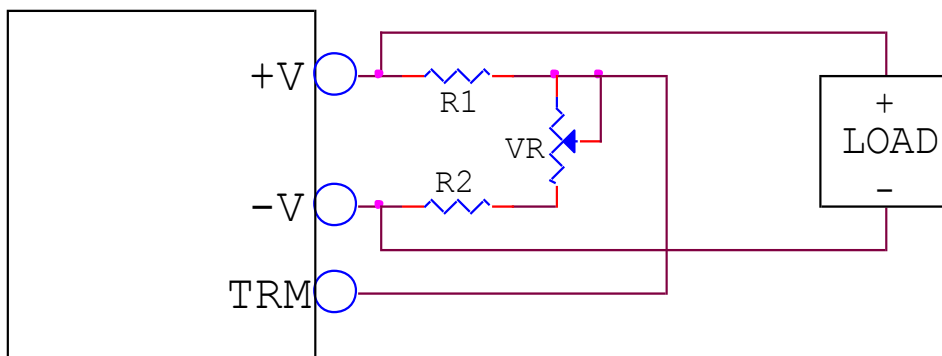
Resistance tolerance $\pm 5\%$

Variable Resistor(VR) :

Total resistance toloatace $\pm 20\%$

Remaining Resistance : Value less than 1%

Vo	R1	R2	VR
3.3V	1.5k Ω	680 Ω	1k Ω
5V	1k Ω	680 Ω	1k Ω
12V	3.9k Ω	680 Ω	1k Ω
15V	5.6k Ω	750 Ω	1k Ω
$\pm 12(24V)$	12k Ω	1k Ω	1k Ω
$\pm 15(30V)$	15k Ω	1k Ω	1k Ω



< Trim Method >

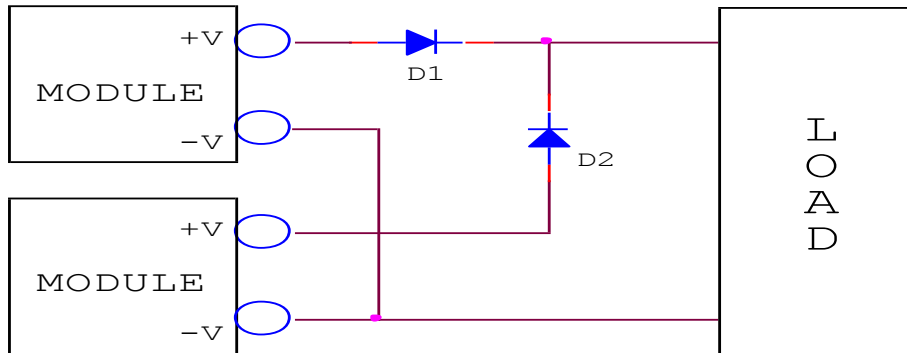
- Over Current Protection

The SDS series is built into an OCP(Over Current Protection) circuit. When the OCP triggers, the output voltage will be fall. If overload condition is removed, the output will automatically recover.

4. Operation Method

Parallel Operation

The module can be operated parallel connection. Refer to diagram as shown below.



Please, you must consider both reverse voltage and forward current of diode, when you choose a diode.

Maximum reverse voltage(V_{rm}) : $V_{rm} > 1.5 \times V_o$

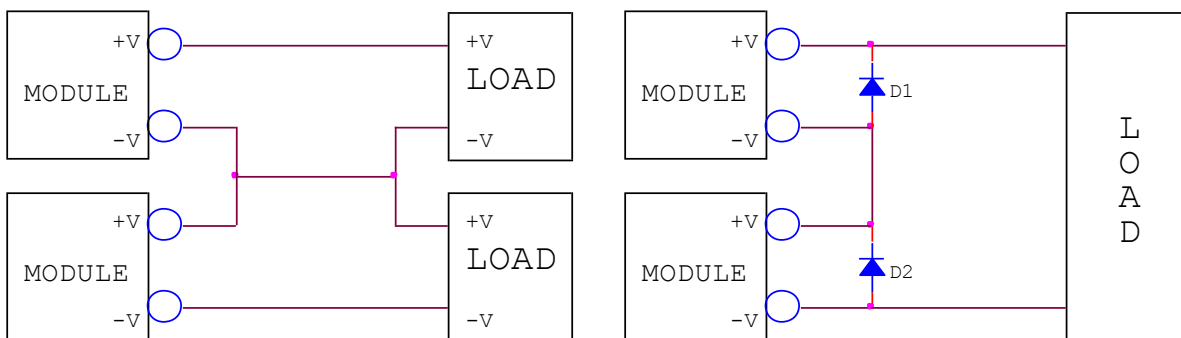
Forward current(I_f) : $I_f > 3 \times I_o$

Also, design a heatsink according to power loss at diode. If you want to reduce power loss, use a schottky barrier diode.

Power loss = $V_f(\text{forward voltage}) \times I_o(\text{output current})$

Series Operation

Series operation is available by connecting the outputs of two or more module as shown below.



< A. General Series Operation >

< B. Complemental Series Operation >

Please, you must consider both reverse voltage and forward current of diode, when you choose a diode.

Maximum reverse voltage(V_{rm}) : $V_{rm} > 1.5 \times V_o$

Forward current(I_f) : $I_f > 3 \times I_o$

Also, design a heatsink according to power loss at diode. If you want to reduce power loss, use a schottky barrier diode.

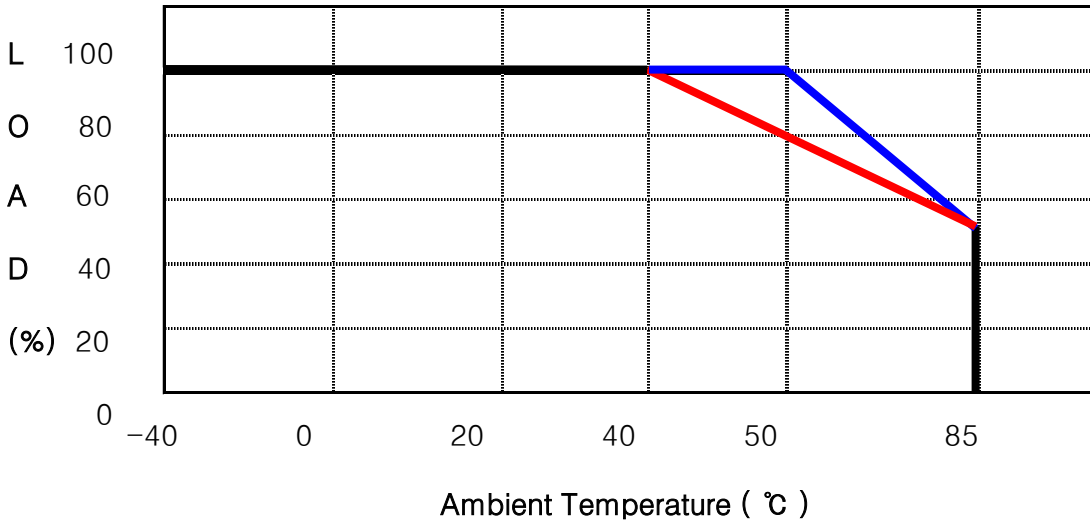
Power loss = $V_f(\text{forward voltage}) \times I_o(\text{output current})$

5. Environment

- Temperature

Operation Temperature

The range of ambient temperature in °C over which a module can be operated safely at either rated or derated output power. Refer to derating curve as shown below.



※ Operating Temperature Range : From -40°C to 85°C

- : SDS20 Series, SDD20 Series
- : SDS20-XX-3R3, SDS20-XX-12, SDS20-XX-15, SDD20 Series
- : SDS20-XX-05 (SDS20-24-05, SDS20-48-05)

< Derating Curve >

Storage Temperature

The range of ambient temperature in °C over which a module may be stored long term without damage. The storage temperature range is from -40°C to 105°C.

- Humidity

Operation Humidity

The range of ambient humidity in % over which a module can be operated safely at either rated or derated output power. Refer to derating curve as shown below. The operating humidity range is from 5% to 95%RH.

Storage Humidity

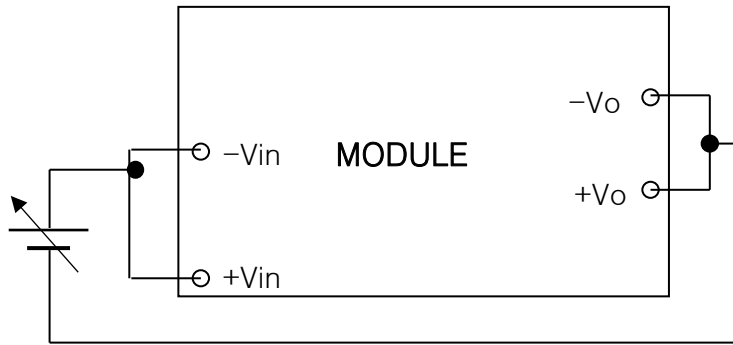
The range of ambient humidity in % over which a module may be stored long term without damage. The storage humidity range is from 5% to 95%RH.

6. Isolation

Isolation Resistance

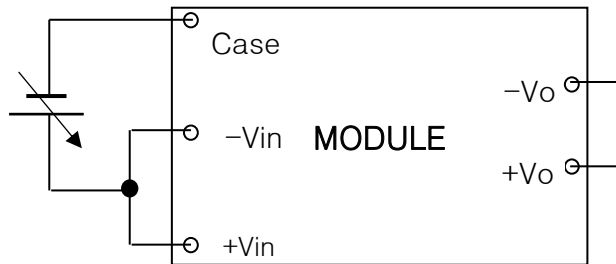
The electrical separation between input and output of a module by means of the power transformer. The isolation resistance is a function of materials and spacings employed throughout the module. Please don't test with a voltage above standard voltage for the Isolation Resistance Test.

< INPUT - OUTPUT >



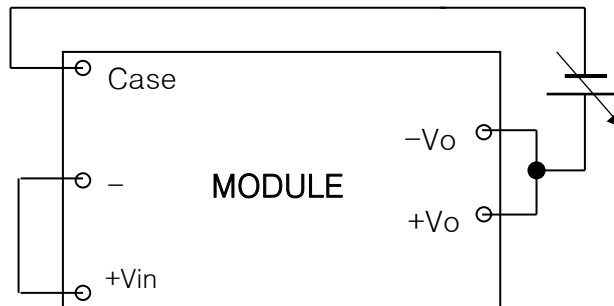
500VDC, 100MΩ

< INPUT - Case >



500VDC, 100MΩ

< OUTPUT - FRG >

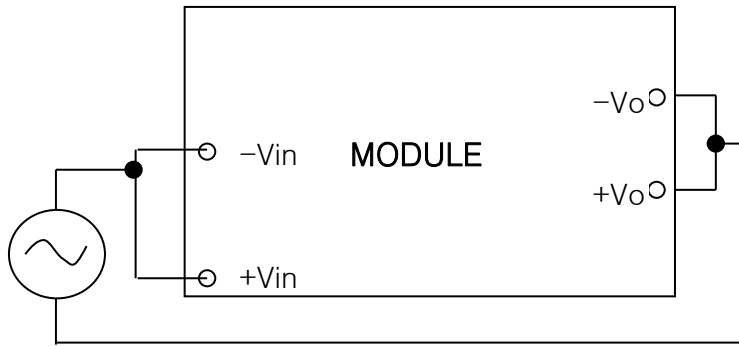


500VDC, 70MΩ

Withstand Voltage

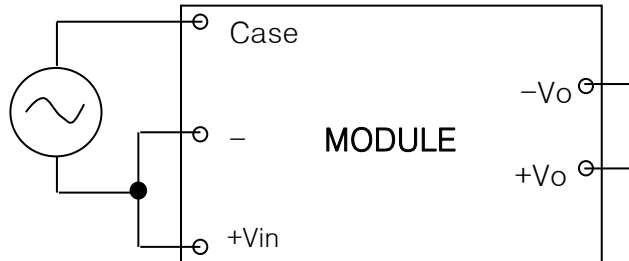
For the withstand voltage test, the applied voltage must be increased gradually from zero to the testing value, and then decreased gradually at shut down. Especially stay away from use of a timer. Where a pulse of several times the applied voltage can be generated.

< INPUT - OUTPUT >



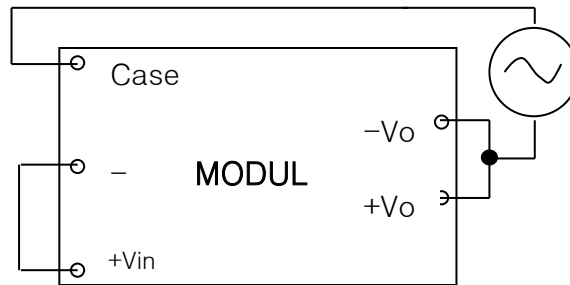
500VAC (10mA) 1minute

< INPUT - FRG >



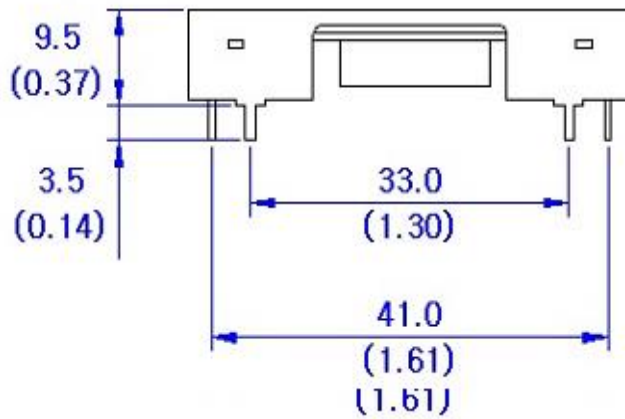
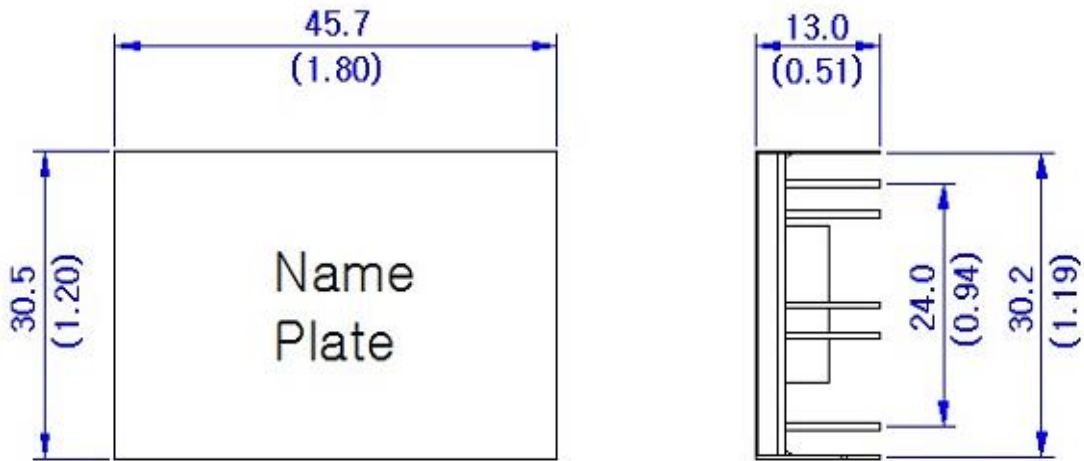
500VAC (10mA) 1minute

< OUTPUT - FRG >



500VAC (10mA) 1minute

7. Outline Dimensions <Unit : mm (inch)>



NOTE

1. Unit : mm (inch)
2. Weight : 14.8g(Max.)
3. Material : SUS4

