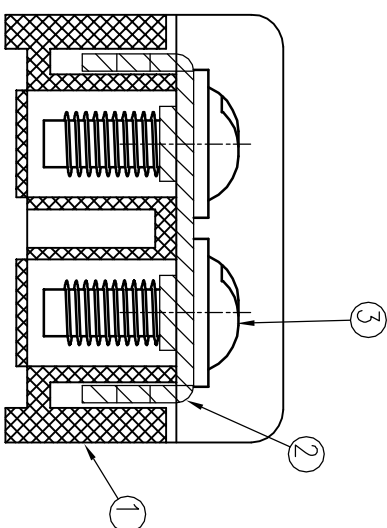
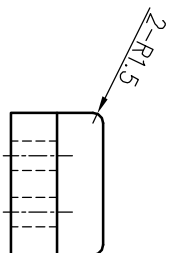
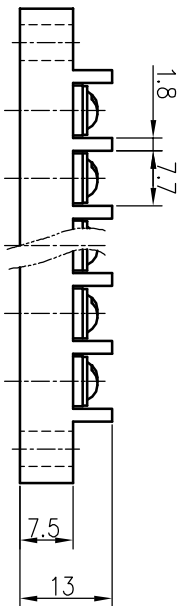
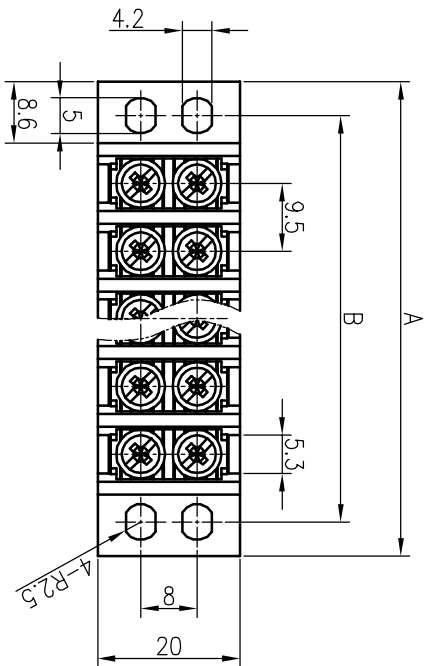


P	1	2	3	4	5	6	7	8	9	10	11	12	13	14	15	16	17	18	19	20
A40.8	-	38.0	47.5	57.0	66.5	76.0	85.5	95.0	104.5	114.0	123.5	133.0	142.5	152.0	161.5	171.0	180.5	190.0	199.5	209.0
B±0.5	-	28.5	38.0	47.5	57.0	66.5	76.0	85.5	95.0	104.5	114.0	123.5	133.0	142.5	152.0	161.5	171.0	180.5	190.0	199.5

COMMERCIAL TOLERANCE	
0.5 to 3	± 0.12
over 3 to 6	± 0.16
over 6 to 10	± 0.18
over 10 to 18	± 0.22
over 18 to 30	± 0.25
over 30 to 50	± 0.3
over 50 to 80	± 0.35



SECTION A-A' SCALE 3:1

SPECIFICATION

1. 정격 : 250V 20A
2. 절연 저항 : DC 500V 1000MΩ 이상
3. 내전압 : AC2000V/min
4. 사용온도범위 : -40°C ~ 85°C
5. 조임 Torque 권고치 : 5kgf·cm 이내

*본 제품은 유해 물질 관리 기준치를 초과하지 않는 제품임 (RoHS Compliance)

DRAWN	CHECKED	CHECKED	APPROVED	THIRD ANGLE PROJECTION		
S.M JUNG	S.Y PARK	J.H PARK		DATE.	UNIT	SCALE
13.01.09	13.01.09	13.01.09		2013.01.09	MM	1:1

TITLE

BR - 950S

DWG No.	No.	PART No.	PART NAME	MATERIAL	Q'TY	REMARKS	FINISH
	③	BOLT-	SCREW	SMCH10A	P	M3X7	NI
	②	DM-950S	TERMINAL	BRASS	P	C2680R 1/2H 0.8t	NI
	①	SAC-950S	FRAME	P.B.T	1	UL94V-0 (G30)	BK



BEE-RYONG ELECTRONICS CO., LTD.