

# LG - 217

LG - 217 photointerrupter combines high output GaAs IRED with photo IC.

The sensor makes possible easy development of objectdetecting systems with high performance, high reliability and small equipment size.

### FEATURES

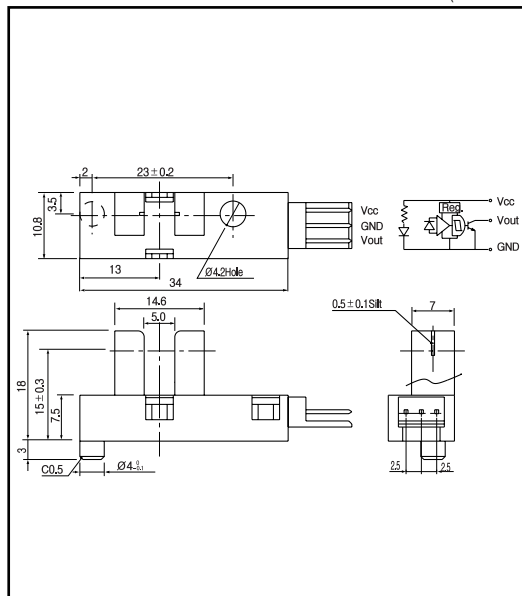
- Compatible to TTL and LSTTL
- Built Amplifier and Schmitt Trigger
- Easy

### APPLICATIONS

- Floppy disk drives
- Copiers
- Facsimiles
- Paper sensors

### DIMENSIONS

(Unit : mm)



### MAXIMUM RATINGS

(Ta=25 )

| Item                     | Symbol                          | Rating     | Unit |
|--------------------------|---------------------------------|------------|------|
| Supply voltage           | V <sub>cc</sub> max.            | 8          | V    |
| Output voltage           | V <sub>out</sub>                | 16         | V    |
| Low level output current | I <sub>OL</sub>                 | 16         | mA   |
| Operating temp.          | T <sub>opr.</sub> <sup>*1</sup> | - 25 ~ +55 |      |
| Storage temp.            | T <sub>stg.</sub> <sup>*1</sup> | - 40 ~ +85 |      |

\*1. The connector shall be inserted or pulled out at normal temperature.

### ELECTRO-OPTICAL CHARACTERISTICS

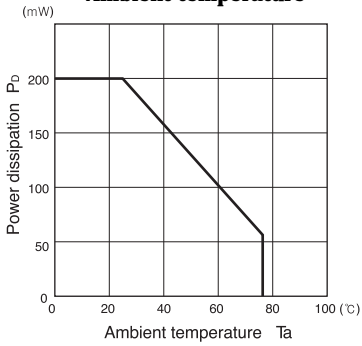
(Ta=25 )

| Item                      | Symbol          | Conditions                                 | Min.  | Typ.    | Max. | Unit. |
|---------------------------|-----------------|--|-------|---------|------|-------|
| Supply voltage            | V <sub>cc</sub> |  |       | 5 ± 10% |      | V     |
| High level output voltage | V <sub>OH</sub> | V <sub>cc</sub> =5V, R <sub>L</sub> =47K   | 45    |         |      | V     |
| Low level output voltage  | V <sub>OL</sub> | V <sub>cc</sub> =5V, I <sub>OL</sub> =15mA |       |         | 0.4  | V     |
| Output form               |                 |  |       | NPN     |      | -     |
| Frequency                 | f               | V <sub>cc</sub> =5V, R <sub>L</sub> =47K   | 3,000 |         |      | Hz    |
| Current consumption       | I <sub>cc</sub> | V <sub>cc</sub> =5V                        |       |         | 35   | mA    |

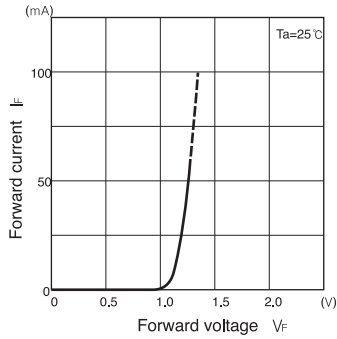
Photointerrupters(Transmissive)

LG - 217

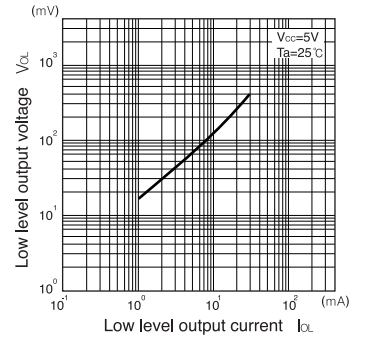
**Power dissipation Vs. Ambient temperature**



**Forward current Vs. Forward voltage**



**Low level output voltage Vs. Low level output current**



**Low level output voltage Vs. Ambient temperature**

