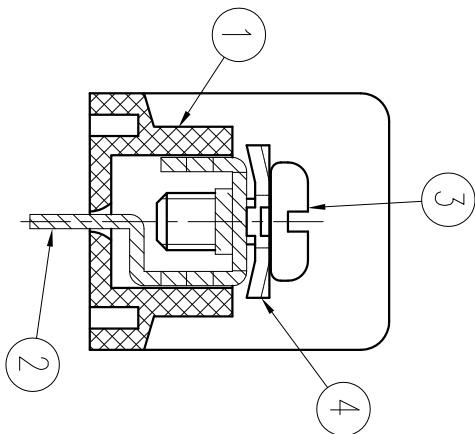
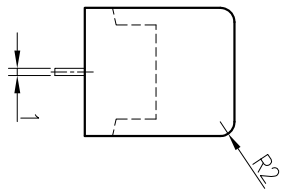
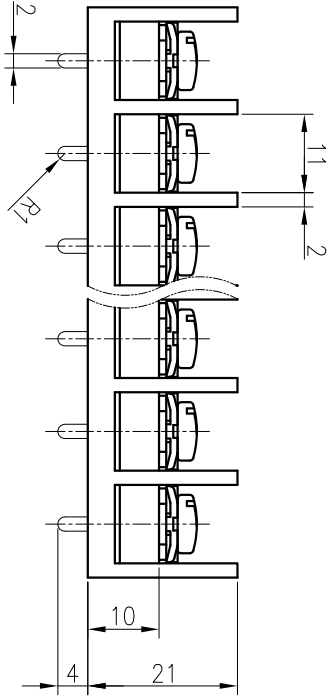
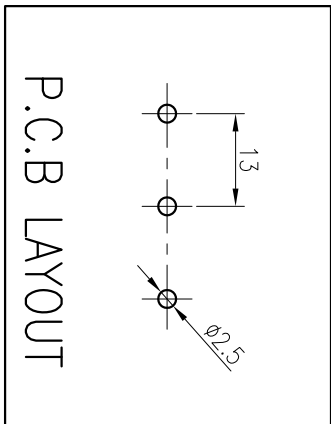
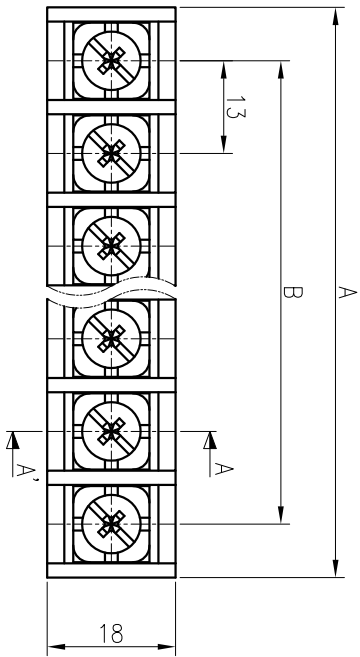


P	1	2	3	4	5	6	7	8	9	10	11	12	13	14	15	16	17	18	19	20
A40.8	-	28	41	54	67	80	93	106	119	132	145	158	171	184	197	210	223	236	249	262
B±0.5	-	13	26	39	52	65	78	91	104	117	130	143	156	169	182	195	208	221	234	247

COMMERCIAL TOLERANCE	
0.5 to 3	± 0.12
over 3 to 6	± 0.16
over 6 to 10	± 0.18
over 10 to 18	± 0.22
over 18 to 30	± 0.25
over 30 to 50	± 0.3
over 50 to 80	± 0.35



**SPECIFICATION**

1. 정격 : 300V 30A
2. 절연 저항 : DC 500V 1000MΩ 이상
3. 내전압 : AC2000V/min
4. 사용온도범위 : -40°C ~ 85°C
5. 조임 Torque 권고치 : 8kgf·cm 이내

\*본 제품은 유해 물질 관리 기준치를 초과하지 않는 제품임 (RoHS Compliance)

DRAWN	CHECKED	CHECKED	APPROVED	THIRD ANGLE PROJECTION		
W.R.KIM				DATE.	UNIT	SCALE
09.05.12				2009.05.12	MM	1:1

TITLE	
BR - 1300C	
DWG No.	BRT - 197



BEE-PYONG ELECTRONICS CO., LTD.

No.	PART No.	PART NAME	MATERIAL	Q'TY	REMARKS	FINISH
④	BOLT	WASHER	SPCC	P	□10.7X10.7	Ni
③	BOLT	SCREW	SMCH10A	P	M4X8	Ni
②	DM-1300C	TERMINAL	BRASS	P	C2680R 1/2H t1.0	Sn
①	SMC-1300C	FRAME	PBT	1	UJ94V-0 (G30)	Bk