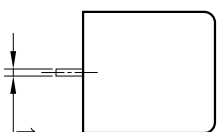
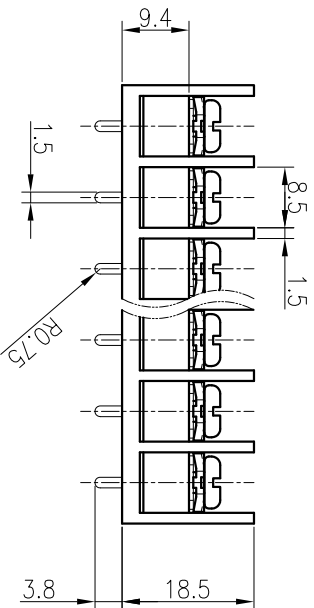
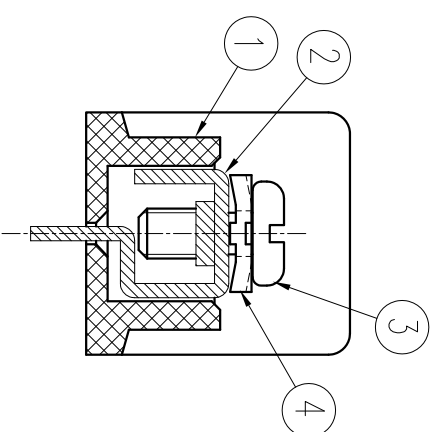
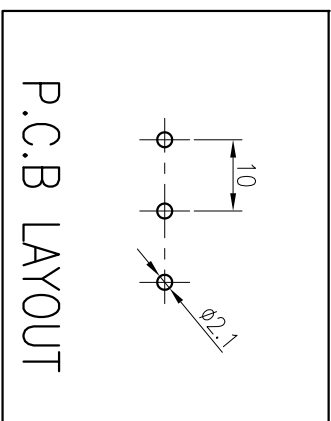
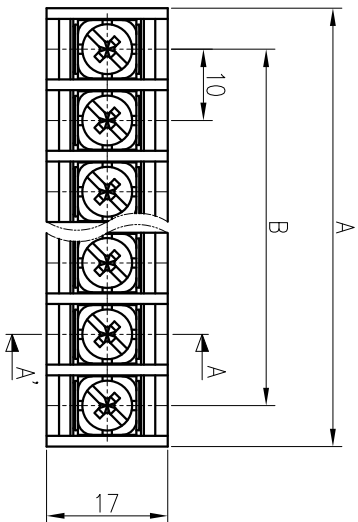


P	1	2	3	4	5	6	7	8	9	10	11	12	13	14	15	16	17	18	19	20
A±0.8	-	21.5	31.5	41.5	51.5	61.5	71.5	81.5	91.5	101.5	111.5	121.5	131.5	141.5	151.5	161.5	171.5	181.5	191.5	201.5
B±0.5	-	10.0	20.0	30.0	40.0	50.0	60.0	70.0	80.0	90.0	100.0	110.0	120.0	130.0	140.0	150.0	160.0	170.0	180.0	190.0

COMMERCIAL TOLERANCE	
0.5 to 3	± 0.12
over 3 to 6	± 0.16
over 6 to 10	± 0.18
over 10 to 18	± 0.22
over 18 to 30	± 0.25
over 30 to 50	± 0.3
over 50 to 80	± 0.35



SPECIFICATION

1. 전격 : 250V 20A
2. 절연 저항 : DC 500V 1000MΩ 이상
3. 내전압 : AC2000V/min
4. 사용온도범위 : -40°C ~ 85°C
5. 조임 Torque 권고치 : 5kgf·cm 이내

*본 제품은 유해 물질 관리 기준치를 초과하지 않는 제품임 (RoHS Compliance)

DRAWN	CHECKED	CHECKED	APPROVED	THIRD ANGLE PROJECTION		DWG No.	BRT - 118		No.	PART No.	PART NAME	MATERIAL	Q'TY	REMARKS	FINISH
W.R.KIM				DATE.	UNIT	SCALE	TITLE		④	BOL-	WASHER	SPCC	P	□8.2X8.2	Ni
09.04.29				2009.04.29	MM	1:1	BR - 1000C		③	BOL-	SCREW	SMCH10A	P	M3.5X8	Ni
									②	DM-950C	TERMINAL	BRASS	P	C2680R 1/2H t1.0	Sn
									①	SAC-1000	FRAME	PBT	1	UL94V-0 (G30)	BK



BEE-RYONG ELECTRONICS CO., LTD.