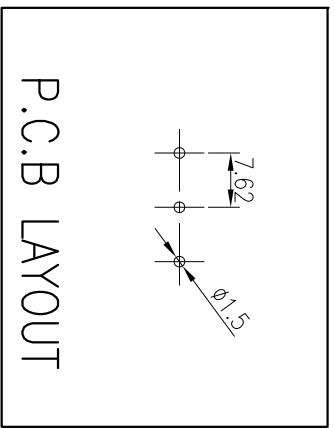
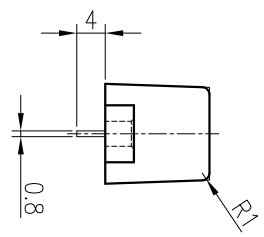
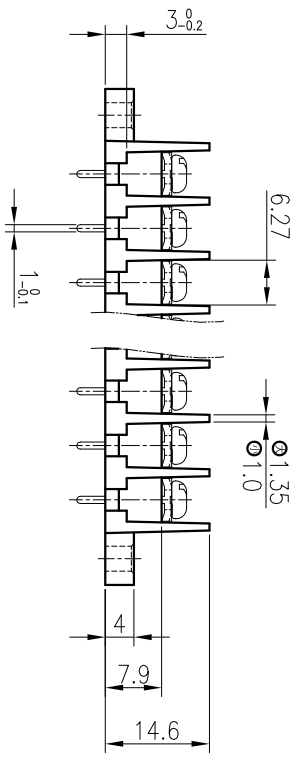
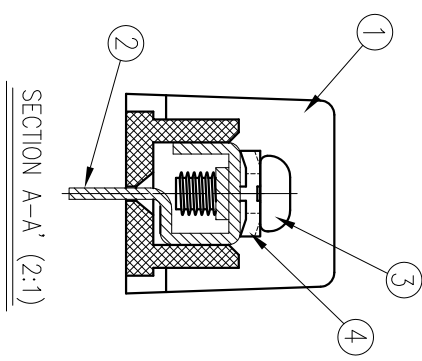
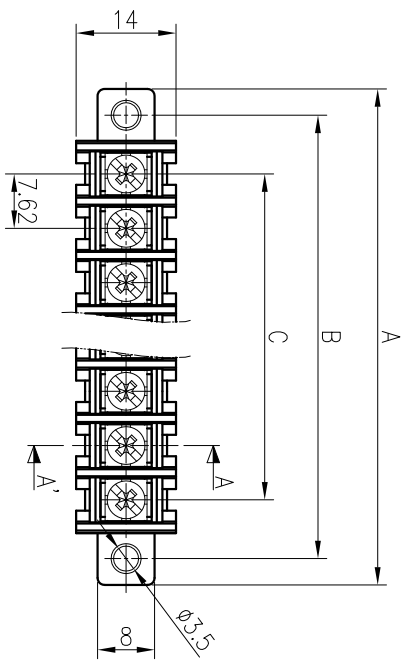


P	1	2	3	4	5	6	7	8	9	10	11	12	13	14	15	16	17	18	19	20	21	22	23	24	25	26	27	28	29	30	COMMERCIAL TOLERANCE
Alt0.8	-	31.50	39.12	46.74	54.36	61.98	69.60	77.22	84.84	92.46	100.08	107.70	115.32	122.94	130.56	138.18	145.80	153.42	161.04	168.66	176.28	183.90	191.52	199.14	206.76	214.38	222.00	229.62	237.24	244.86	0.5 to 3 ± 0.12
Bt0.5	-	24.10	31.72	39.34	46.96	54.58	62.20	69.82	77.44	85.06	92.68	100.30	107.92	115.54	123.16	130.78	138.40	146.02	153.64	161.26	168.88	176.50	184.12	191.74	199.36	206.98	214.60	222.22	229.84	237.46	over 3 to 6 ± 0.16
Ct0.5	-	7.62	15.24	22.86	30.48	38.10	45.72	53.34	60.96	68.58	76.20	83.82	91.44	99.06	106.68	114.30	121.92	129.54	137.16	144.78	152.40	160.02	167.64	175.26	182.88	190.50	198.12	205.74	213.36	220.98	over 6 to 10 ± 0.18
																														over 10 to 18 ± 0.22	
																														over 18 to 30 ± 0.25	
																														over 30 to 50 ± 0.3	
																														over 50 to 80 ± 0.35	



SPECIFICATION

- 1.정격 : 250V 10A
- 2.절연 저항 : DC 500V 1000MΩ 이상
- 3.내전압 : AC2000V/min
- 4.사용온도범위 : -40°C ~ 85°C
- 5.조임 Torque 권고치 : 5kgf·cm 이내

*본 제품은 유해 물질 관리 기준치를 초과하지 않는 제품임 (RoHS Compliance)

DRAWN	CHECKED	CHECKED	APPROVED	THIRD ANGLE PROJECTION			DWG No.	BRT - 059		No.	PART No.	PART NAME	MATERIAL	Q'TY	REMARKS	FINISH
W.R.KIM				DATE.	UNIT	SCALE	TITLE	BR - 762D		④	BOLT	WASHER	SPCC	P	□ 6X6	Ni
09.03.06				2009.03.06	MM	1:1				③	BOLT	SCREW	SMCH10A	P	M3X6	Ni
										②	DAM-762C	TERMINAL	BRASS	P	C2680R 1/2H t0.8	Sn
										①	SAC-762D	FRAME	P.B.T	1	UL94V-0 (G30)	BK



BEE-RYONG ELECTRONICS CO., LTD.